



**Because property is personal with...**

**Ritherup Lane, Rainhill L35**

**Belvoir**

**£1,000 PCM**



## **Key Features**

- Ground Floor
- Two double bedrooms
- Large kitchen diner
- New kitchen and bathroom
- Holding Fee £230
- Parking
- EPC rating C





Welcome to this spacious and newly renovated, two-bedroom ground floor apartment with private access and off-road parking, located in the highly sought-after Ritherup Lane area of Rainhill.

This lovely apartment offers a fantastic opportunity for professionals, couples, or small families looking to rent in a desirable and well-connected area. The property comprises a generous living room with plenty of natural light and double patio doors leading to the communal garden, a separate newly installed eat in kitchen/Diner with ample cupboard space, two well-proportioned double bedrooms, and brand new bathroom with a lovely new three-piece bathroom suite.

The apartment benefits from private access, making it feel more like a home than a typical apartment, as well as off-road parking which is a rare and valuable feature in this location.

To the front of the property, there is a well-maintained shared garden space, offering a pleasant outdoor area to enjoy during warmer months. Whether you're looking for a quiet spot to relax with a morning coffee or some green space for reading, this communal area provides a peaceful and attractive setting that enhances the appeal of the home.

Situated on Ritherup Lane, the property enjoys a peaceful residential setting while being just a short walk from Rainhill Village, which offers a range of local amenities including independent shops, cafes, pubs, and restaurants. The area is also home to well-regarded schools, making it an ideal choice for families.

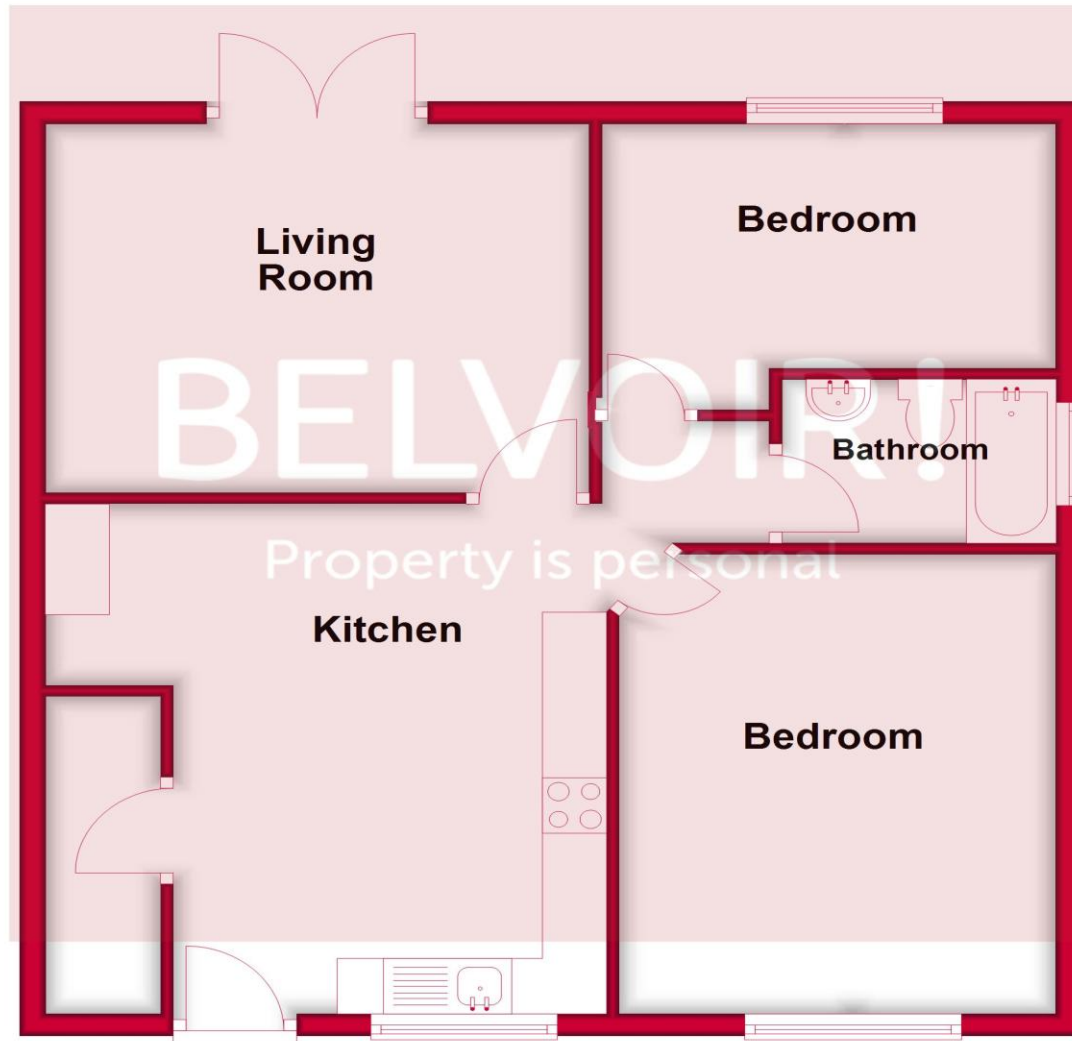
Commuters will appreciate excellent transport links, with Rainhill Station offering regular rail services to Liverpool, Manchester, and beyond. There is also easy access to the M62 and major road networks, providing convenient travel across the region.







## Ground Floor





# Belvoir

