

HUNTERS®

HERE TO GET *you* THERE

449 Halifax Road, Grenoside, Sheffield, S35 8PB

Offers In The Region Of £550,000

Property Images



HUNTERS®

HERE TO GET *you* THERE

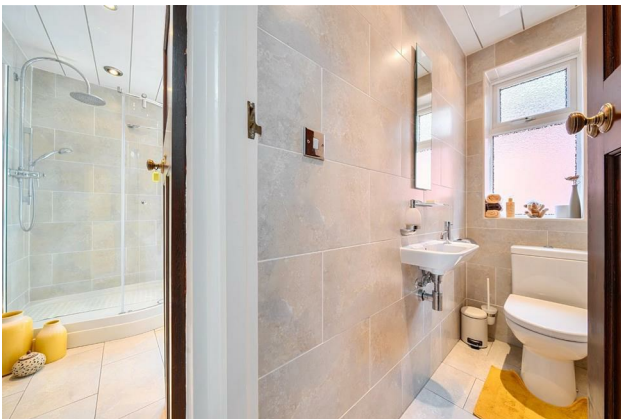
Property Images



HUNTERS®

HERE TO GET *you* THERE

Property Images



HUNTERS[®]

HERE TO GET *you* THERE

Property Images





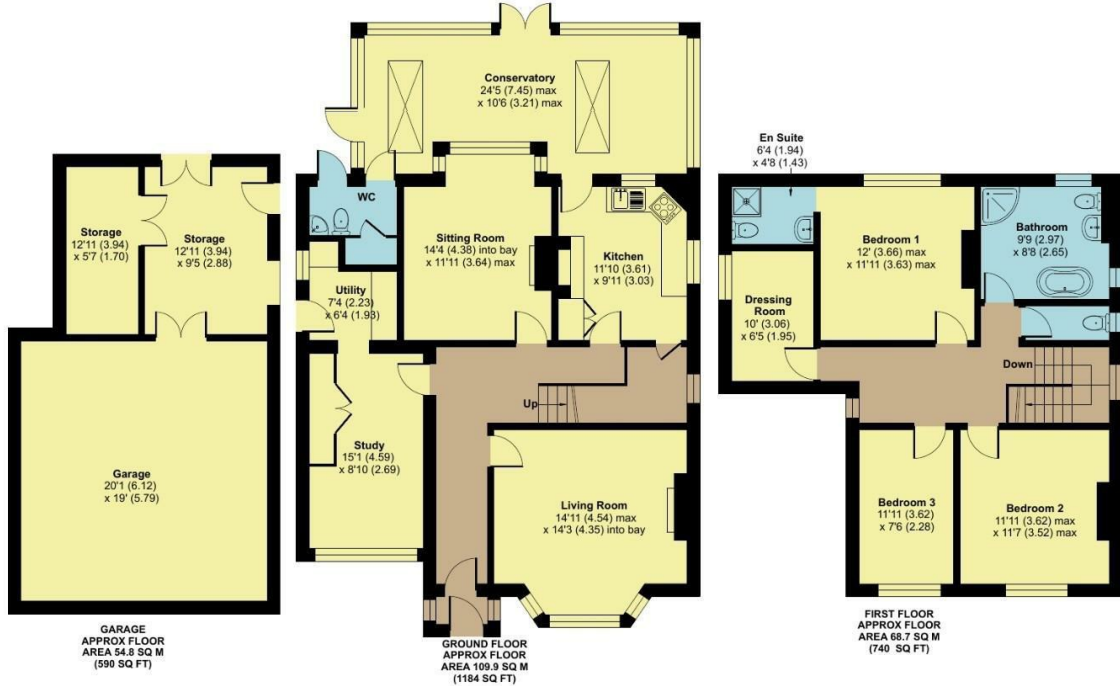
Halifax Road, Grenoside, Sheffield, S35

Approximate Area = 1924 sq ft / 178.7 sq m

Garage = 590 sq ft / 54.8 sq m

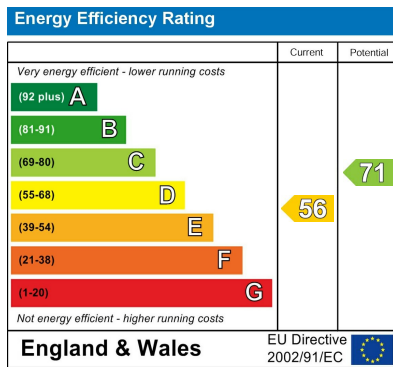
Total = 2514 sq ft / 233.5 sq m

For identification only - Not to scale

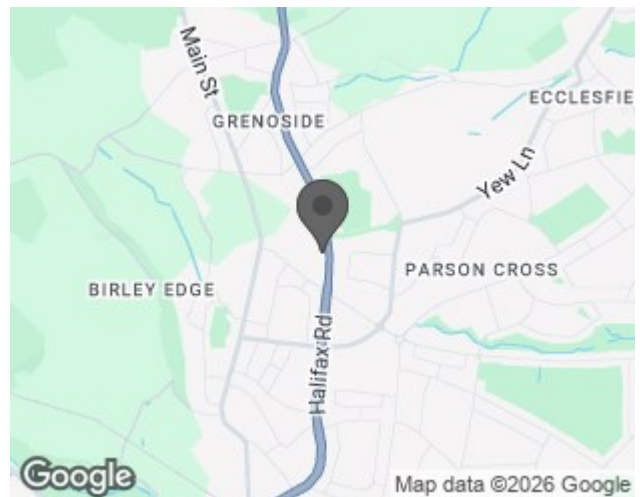


Floor plan produced in accordance with RICS Property Measurement Standards incorporating International Property Measurement Standards (IPMS2 Residential). © nitchecom 2026. Produced for Hunters Property Group. REF: 1465455

EPC



Map



Details

Type: House - Detached Beds: 4 Bathrooms: 2 Receptions: 3 Tenure: Freehold

Summary

NO UPWARD CHAIN An exceptional and deceptively spacious four-bedroom detached family home, situated in the highly sought-after S35 area of Sheffield. Beautifully presented throughout, this impressive property offers an outstanding combination of characterful reception rooms, high quality fixtures and fittings, and exceptional outdoor space that truly sets it apart from the crowd. The ground floor boasts a generous open-plan layout with multiple reception rooms, a stunning kitchen with separate pantry, a sun room with solid roof, utility room, home office, and the added convenience of both an internal and external cloakroom. The first floor provides four well-proportioned bedrooms including a master bedroom with ensuite, a luxurious family bathroom, and a further separate WC.

Externally, the property really comes into its own. A superb rear garden with established planting, a never-ending lawn, secret woodland, sun-drenched patio areas, and a pagoda create an outdoor space that is simply extraordinary. To the front, excellent kerb appeal is complemented by ample off-road parking. A double garage with electric door, gym area, and storage completes this truly remarkable package.

Early viewing is strongly recommended — a home of this quality, specification, and setting will not be available for long.

Features

- 4 BED DETACHED PROPERTY • NO UPWARD CHAIN • IMPRESSIVE GARDEN • SPACIOUS DIMENSIONS THROUGHOUT • DOUBLE GARAGE AND DRIVEWAY • LARGE SUN ROOM • SCOPE TO RECONFIGURE • CHARACTERFUL FEATURES • CLOSE TO AN ARRAY OF AMENITIES • GOOD COMMUTER LOCATION