



Connells

Fairway Road South
Shepshed Loughborough



Property Description

A beautifully presented family home set in a popular residential area of Shepshed, offering generous living space, modern interiors, and a private rear garden. Perfect for first-time buyers, growing families, or anyone seeking a well-connected yet peaceful location.

Set along the desirable Fairway Road South, this attractive detached bungalow offers a fantastic blend of comfort, practicality, and modern living. The home has been thoughtfully maintained and is ready for its next owners to move straight in.

The ground floor features a welcoming entrance hall leading into a bright, airy lounge—perfect for relaxing or hosting guests, fitted kitchen with a bright and practical space designed for modern family living two generous sized en-suite bedrooms and family bathroom.

The front of the property includes a driveway with space for multiple vehicles.

Shepshed is a thriving community with excellent local amenities, including highly rated primary and secondary schools, local shops, cafés, and supermarkets, easy access to M1 (J23) for commuting, close proximity to Loughborough, Leicester, and East Midlands Airport.

Early viewing is strongly recommended to appreciate the space, condition, and potential this home offers.

Entrance Hall

The property opens into a bright and welcoming entrance hall, offering an immediate sense of space and warmth. The hallway provides access to the main living areas and features practical flooring suited to busy family life. There is ample room for coats, shoes, and everyday essentials, making this a functional and inviting introduction to the home.

Living Room

The lounge is a bright and comfortable living space positioned at the front of the property, benefits from double glazed window, radiator and is neutrally decorated. The room provides generous floor space for a variety of furniture arrangements

Kitchen

Fitted with a range of modern wall and base units with ample worktop space, built in oven, hob and extractor fan, part tiled walls, practical flooring for easy cleaning, stainless steel sink unit and double glazed window overlooking the front

Bedroom One

Having double glazed window to the rear, radiator and door leading to the en-suite

En-Suite

Comprising a corner shower enclosure with glazed screen, low-flush WC, and a contemporary wash basin set within a vanity unit.

Bedroom Two

A generously sized double bedroom positioned at the rear of the property and benefits from double glazed window, radiator and door leading to the en-suite

En-Suite

Having low level WC and wash hand basin

Bathroom

It features a contemporary three-piece suite including a panelled bath with shower over, low level WC and wash hand basin, part tiled walls, two double glazed windows and heated towel rail

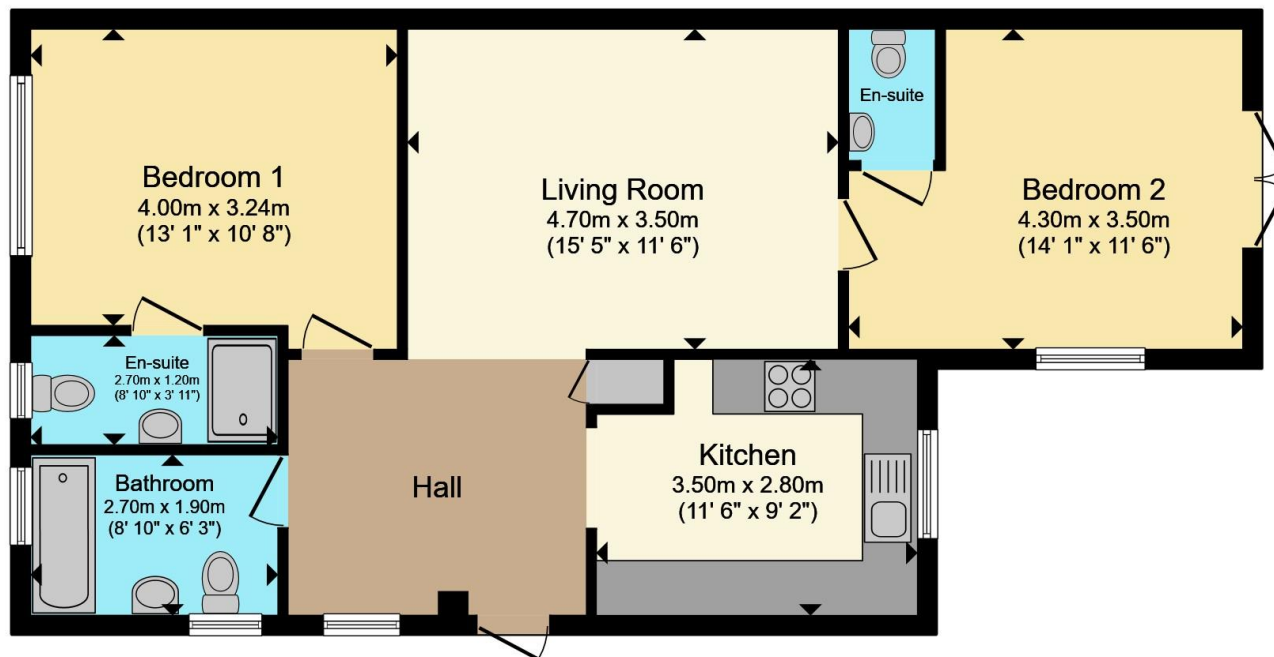
Outside

The property enjoys a generous and well-maintained plot, offering attractive outdoor space to the front and rear. At the front, a private driveway provides convenient off-road parking for multiple vehicles, with a neat frontage that enhances the home's kerb appeal.









Total floor area 74.2 m² (799 sq.ft.) approx

This floor plan is for illustrative purposes only. It is not drawn to scale. Any measurements, floor areas (including any total floor area), openings and orientation are approximate. No details are guaranteed, they cannot be relied upon for any purpose and they do not form part of any agreement. No liability is taken for any error, omission or misstatement. A party must rely upon its own inspection(s). Powered by www.propertybox.io

Connells

To view this property please contact Connells on

T 0116 262 0022
E leicester@connells.co.uk

22-24 Halford Street
 LEICESTER LE1 1JB

EPC Rating: D Council Tax
 Band: C

Tenure: Freehold

view this property online connells.co.uk/Property/LTR325890



1. MONEY LAUNDERING REGULATIONS Intending purchasers will be asked to produce identification documentation at a later stage and we would ask for your co-operation in order that there will be no delay in agreeing the sale. 2. These particulars do not constitute part or all of an offer or contract. 3. The measurements indicated are supplied for guidance only and as such must be considered incorrect. Potential buyers are advised to recheck measurements before committing to any expense. 4. We have not tested any apparatus, equipment, fixtures, fittings or services and it is in the buyers interest to check the working condition of any appliances.

Connells Residential is registered in England and Wales under company number 1489613, Registered Office is Cumbria House, 16-20 Hockliffe Street, Leighton Buzzard, Bedfordshire, LU7 1GN. VAT Registration Number is 500 2481 05.

See all our properties at www.connells.co.uk | www.rightmove.co.uk | www.zoopla.co.uk

Property Ref: LTR325890 - 0007