



Ushaw Villas, Ushaw Moor, Durham

Offers in excess of £160,000



EPC rating: C

- 3 Bed semi-detached property
- High specification throughout
- Relandscaped rear garden

- Sleek contemporary kitchen
- Well-proportioned bedrooms
- Driveway and garage

Description

Nicholas Humphreys are pleased to welcome to the market this stunning 3 bedroom semi-detached property, located in the ever popular setting of Ushaw Moor. This immaculately presented home offers spacious living with the addition of a relandscaped front and rear garden, coupled with a double driveway and garage.

The property enjoys a substantial plot, boasting an impressive floorplan comprising an inviting entrance lobby, convenient ground floor w/c, living room with space to accommodate a dining area, and a spacious kitchen with rear door providing access to the side patio. To the first floor are two comfortable double bedrooms with a well-proportioned single bedroom that can double as a home office / study, as well as a three-piece suite bathroom.

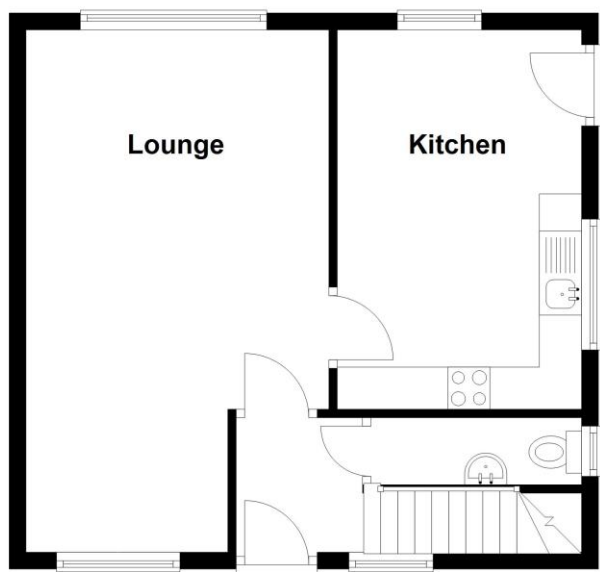
The home is set within a quiet and appealing area, yet just a short distance from local amenities. A wide selection of shops, restaurant and pubs are all close at hand, making both daily living and socialising easy. The location is particularly well suited to families, with highly regarded schools nearby and an abundance of green spaces to enjoy. Strong transport links further enhance its appeal, with straightforward access to the A690 and A1 (M), ensuring quick connections to the surrounding areas.

Externally the property benefits from a recently landscaped front garden and rear patio area. Present also a double driveway, detached garage and private rear garden complete with a patio and grass section.

This is a fantastic opportunity to secure a home in a convenient and well-connected area. Early viewing is highly recommended.

Floorplan

Ground Floor



First Floor



Total area: approx. 79.9 sq. metres (860.2 sq. feet)

4 Ushaw Villas , Ushaw Moor, Durham

Photographs



Map



Notes