



The Knoll, W13

£900,000

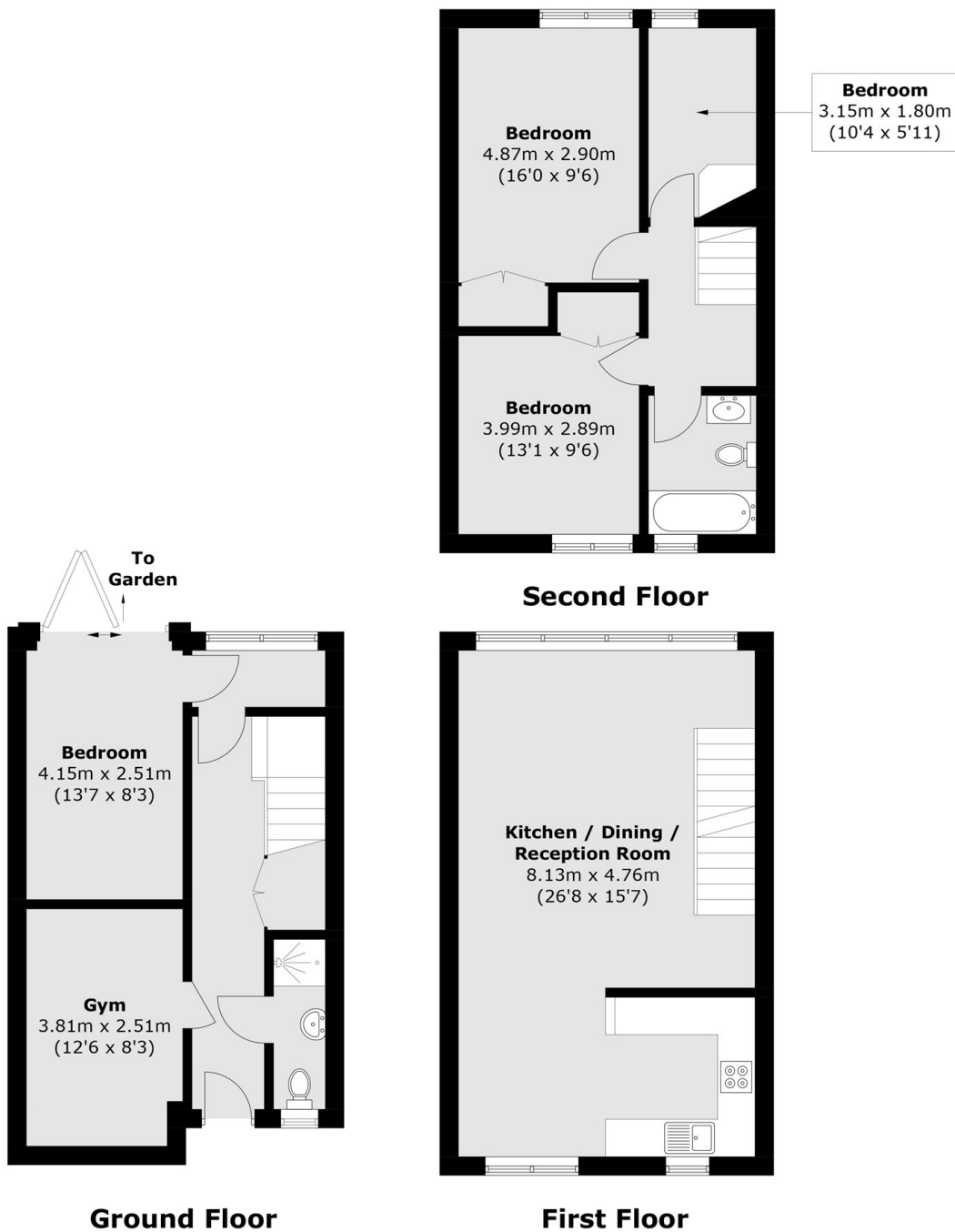
A rarely available and beautifully presented three/four-bedroom townhouse, set within a peaceful residential development surrounded by mature, landscaped grounds. The property further benefits from off-street parking, a gym, and a private south-facing garden.

Set back in a secluded position amidst tranquil communal gardens and a picturesque lake, the property is also superbly located for easy access to the shops, restaurants, and amenities of Ealing Broadway (Elizabeth, Central and District lines), as well as the award-winning Pitshanger Lane high street.

Features

- Three/Four Bedrooms
- Town House
- Landscaped Grounds
- Off Street Parking
- Gym
- No Onward Chain

The Knoll, London, W13



Total area (approx.): 115.1 sq. m (1,238.9 sq. ft)