



Talbot Street, Southport, PR8



£100,000

- Attractive Period Conversion
- First Floor Apartment
- Spacious and Well-Proportioned Layout
- Bright Living Space
- Good Quality Fixtures & Fittings
- Scope for Further Improvement
- Leasehold
- EPC rating D



Presented to the market with NO ONWARD CHAIN, this well-proportioned one-bedroom first floor flat offers an excellent opportunity for first-time buyers, downsizers, or investors alike.

Set within an attractive period conversion in a popular central Southport location. The accommodation is thoughtfully arranged and briefly comprises a welcoming hallway, a bright and spacious living room with pleasant outlook, a generously sized double bedroom, a modern fitted kitchen complete with a range of integrated appliances and a contemporary shower room.



The layout provides a comfortable flow of space, ideal for modern living.

The property is presented with good quality fixtures and fittings throughout, meaning it is ready for immediate occupation, while still offering scope for a purchaser to add their own style and further enhance the interior.

Externally, the building benefits from off-road parking to the front and established surroundings, all within easy reach of Southport town Centre, transport links, and a wide range of local amenities.

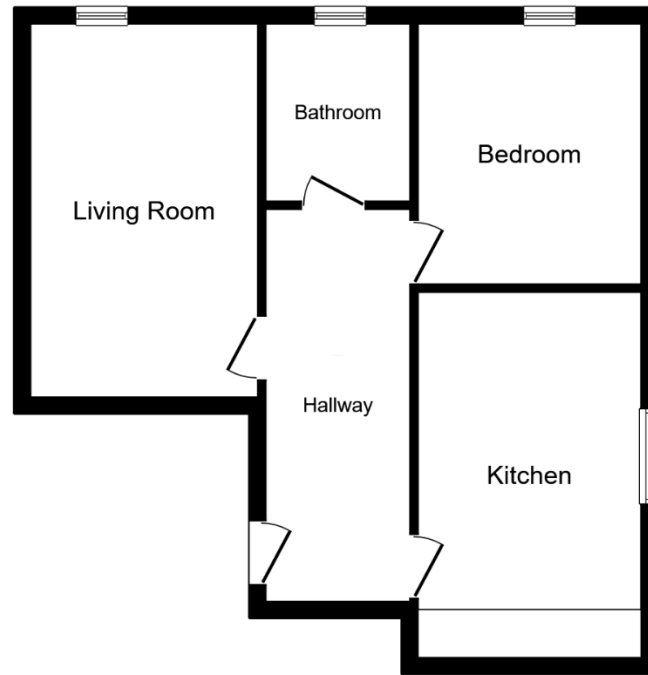
This is a fantastic opportunity to acquire a well-located home with both charm and potential. Early viewing is highly recommended.

Additional Information

Vendor has advised us of the following monthly service charge.
£120pcm with Lynn Thompson Management company
Leasehold - 999 years from 1st of July 1985

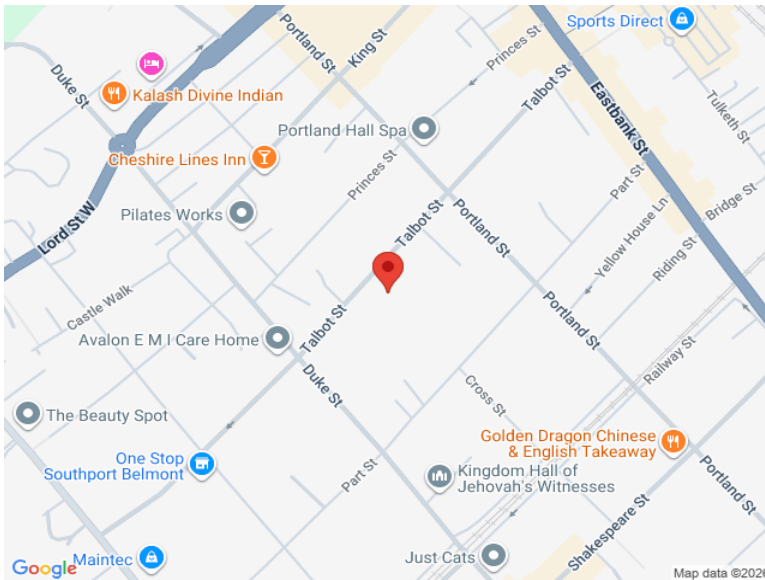
Disclaimer

These details are intended to give a fair description only and their accuracy cannot be guaranteed nor are any floor plans exactly to scale. These details do not constitute part of any contract and are not to be relied upon as statements of representation or fact. Intended purchasers are advised to recheck all measurements before committing to any expense and to verify the legal title of the property from their legal representative. Any contents shown in the images contained within these particulars will not be included in the sale unless otherwise stated or following individual negotiations with the vendor. Northwood have not tested any apparatus, equipment, fixtures, or services so cannot confirm that they are in working order and the property is sold on this basis.



Floor Plan

This floor plan is for illustrative purposes only. It is not drawn to scale. Any measurements, floor areas (including any total floor area), openings and orientations are approximate. No details are guaranteed, they cannot be relied upon for any purpose and do not form any part of any agreement. No liability is taken for any error, omission or misstatement. A party must rely upon its own inspection(s). Powered by www.Propertybox.io



Northwood Southport and Ormskirk

01704 545 657

southport@northwooduk.com