



## Dominion Close, TW3

### £315,000

Offered to the market with no onward chain is this delightful first floor apartment located in a popular and centrally located development. Offering more than 700 square feet of generous living space, this two double bedroom apartment (one with ensuite) and a family bathroom. Further benefits include a spacious reception/kitchen, long lease and allocated parking space.

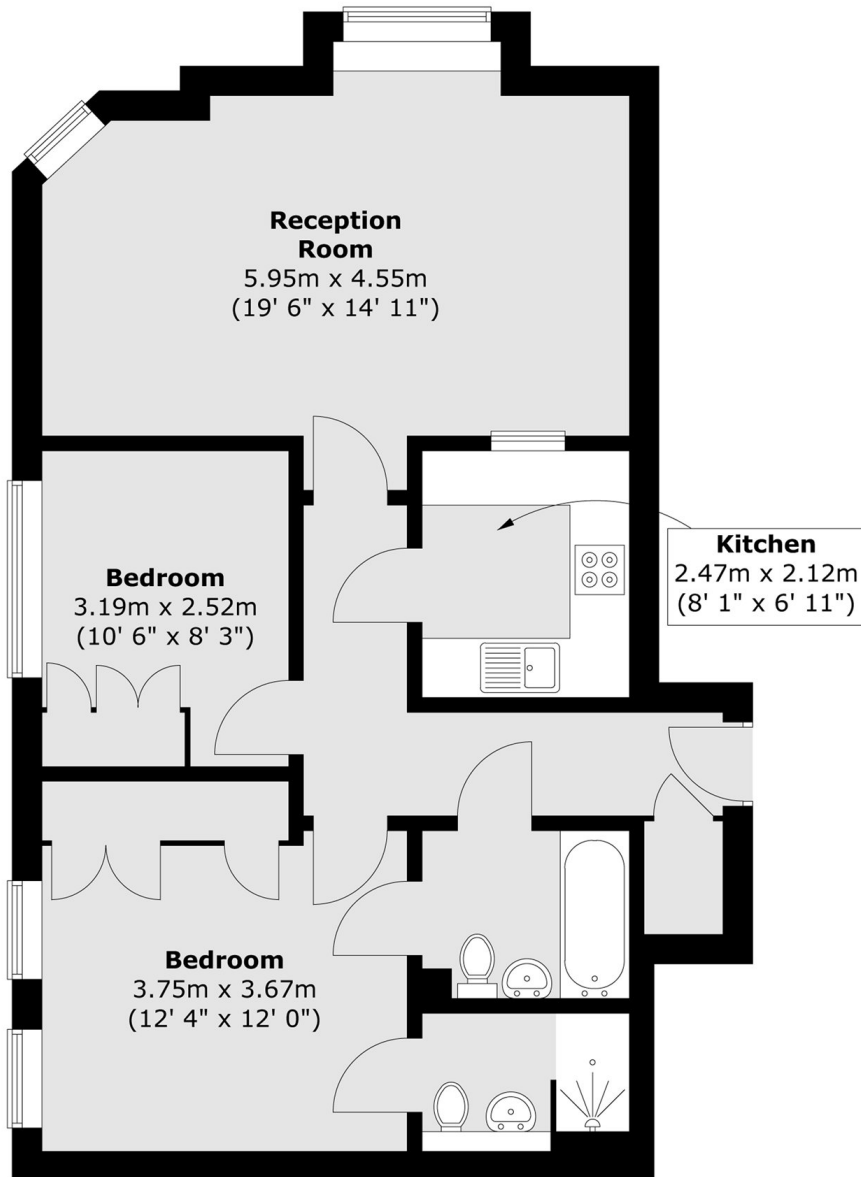
Dominion Close is a popular and sought after development superbly situated in the centre of town. With links to and from Central London via a short walk to Hounslow East Station (Piccadilly Line) this is the perfect opportunity for first time buyers and investors alike.

### Features

- Two Double Bedrooms
- Two Bathrooms
- Allocated Parking
- Long Lease
- Gated Development
- Communal Gardens
- No Chain

# Dominion Close, Hounslow, TW3

## First Floor



Total area (approx.) : 66.2 sq. m (712 sq. ft)