



**Price**  
**£425,000**

**Freehold**

3x  1x  1x 

**Pepper Hill, Northfleet,  
Gravesend, Kent, DA11**

*Wards*  
Helping you move forwards



## Main features

- Well presented family home
- Popular residential location
- Utility room and downstairs cloakroom
- Extended providing extra living space
- Detached double garage

## Accommodation

### GROUND FLOOR

- Entrance Porch
- Lounge : 16'6 x 12'9 (5.03m x 3.89m)
- Kitchen/Diner : 16'6 x 10'7 (5.03m x 3.23m)
- Garden Room : 12'1 x 7'0 (3.69m x 2.14m)
- Utility Room : 5'2 x 5'0 (1.58m x 1.53m)
- Cloakroom

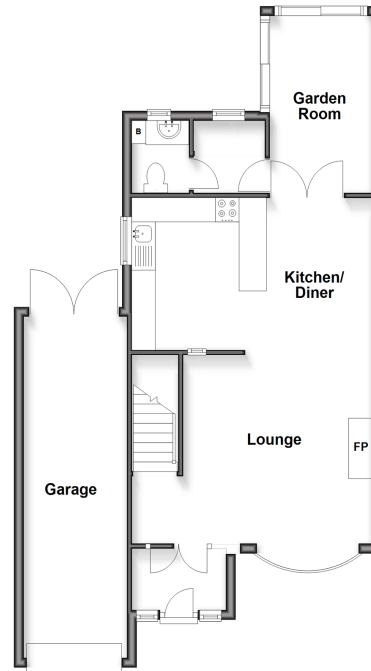
### FIRST FLOOR

- Landing
- Bedroom 1: 12'9 x 9'8 (3.89m x 2.95m)
- Bedroom 2: 9'8 x 8'9 (2.95m x 2.67m)
- Bedroom 3: 8'9 x 6'4 (2.67m x 1.93m)
- Shower Room

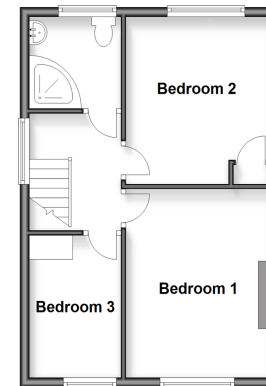
### OUTSIDE

- Driveway
- Double Garage
- Rear Garden

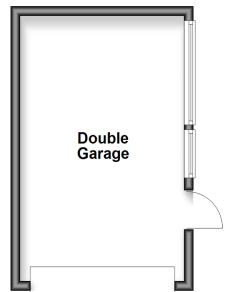
**Ground Floor**  
Approx. 68.5 sq. metres (737.7 sq. feet)



**First Floor**  
Approx. 38.1 sq. metres (410.5 sq. feet)



**Outbuilding**  
Approx. 19.2 sq. metres (206.7 sq. feet)



Call Gravesend - 01474 352417 ■ [wardsokent.co.uk](http://wardsokent.co.uk)

■ Legal advice should be taken to verify fixtures/fittings, planning, alterations and/or lease details

■ Appliances & services are untested, dimensions are approximate and floor plans are not to scale



11140917/20260312/MM/KG