



OLD MARKET SQUARE, SHOREDITCH, E2

£2,000 OFFERS IN EXCESS

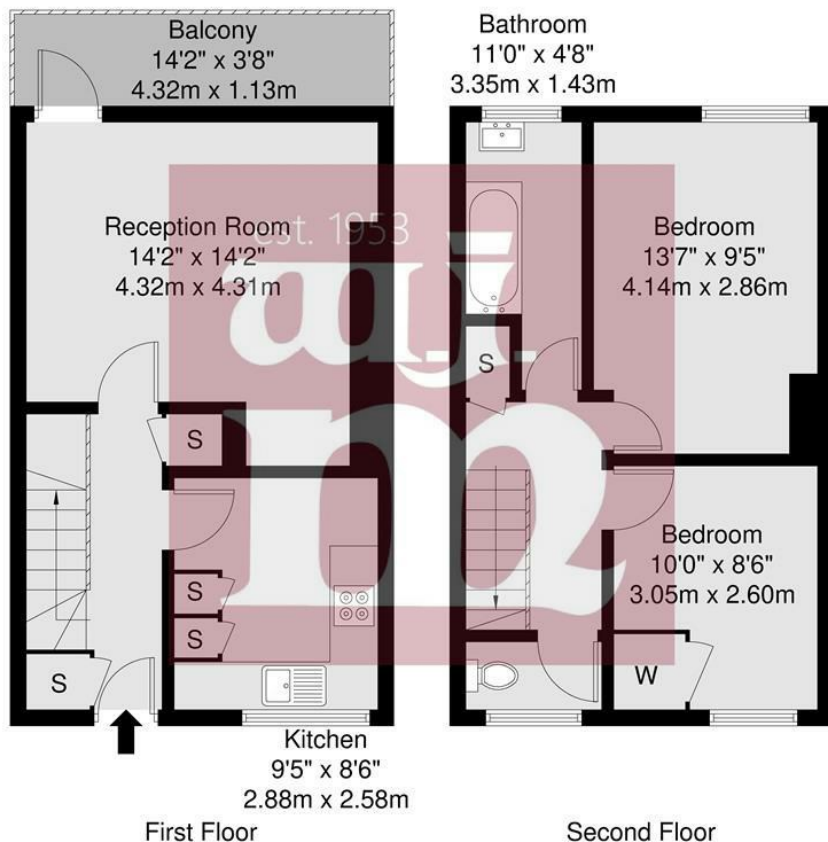
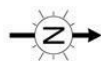
- Offers over £2000pcm
- Arranged over two floors
- Private Balcony
- Stylish Kitchen & Bathroom
- Close proximity to Shoreditch
- Columbia Road Flower Market

wj.
meade



Old Market Square, E2

GROSS INTERNAL AREA
64.7 sq m / 696 sq ft



W J Meade are delighted to offer this two bedroom flat to rent in Old Market Square, Shoreditch. As you walk into the flat you have the stylish kitchen to the right and the reception room in front of you which leads out onto the private balcony. Moving upstairs, there are the two double bedrooms, modern bathroom and separate W/C. Just a stones throw away from Shoreditch and Liverpool Street tube station, as well as Columbia Flower market, this property is great for those wanting the live in the heart of East London. Offers over £2000pcm
Deposit is 5 week's rent.

GROSS INTERNAL AREA (GIA) The footprint of the property 64.7 sq m / 696 sq ft	TOTAL STORAGE SPACE Storage and wardrobe total area 2.9 sq m / 31 sq ft	EXTERNAL FEATURES Garden, Balcony, Terrace, Verandah etc. 4.8 sq m / 51 sq ft	RESTRICTED HEAD HEIGHT Limited use areas under 1.5m 0.0 sq m / 0.0 sq ft
---	---	---	--

Disclaimer: Floorplan measurements are approximate and are for illustrative purposes only. While we do not doubt the floorplan accuracy and completeness, you or your advisors should conduct a careful, independent investigation of the property in respect of monetary valuation.

Maison
VUE

Service charge £n/a
Ground rent £n/a
Reserve fund £n/a
n/a years lease
Council tax band C
Current EPC Rating 71
Tenure:



All sizes are approximate. The Agent has not tested any apparatus, equipment, fixtures and fittings, or services and so cannot verify that they are in working order or fit for the purpose. A buyer is advised to obtain verification from their Solicitors or Surveyor. Photographs are for illustration purposes only and may depict items, which are not for sale or included in the sale price. References to tenure of a property are based upon information supplied by the vendor. The agent has not had sight of the title documents, a buyer is advised to obtain verification from their solicitor. Money Laundering Regulations 2003: Intending purchasers will be asked to produce identification, documentation at a later stage and we would ask for your co-operation in order that there will be no delay in agreeing the sale.

These particulars are intended to give a fair description of the property only and are in no way guaranteed, nor do of any contract. They are issued on the express condition that all negotiations are conducted through W.J. Meade Estate Agents. All subject to contract and to being unsold.