



THE IMPERIAL, W2

£2,700 pcm

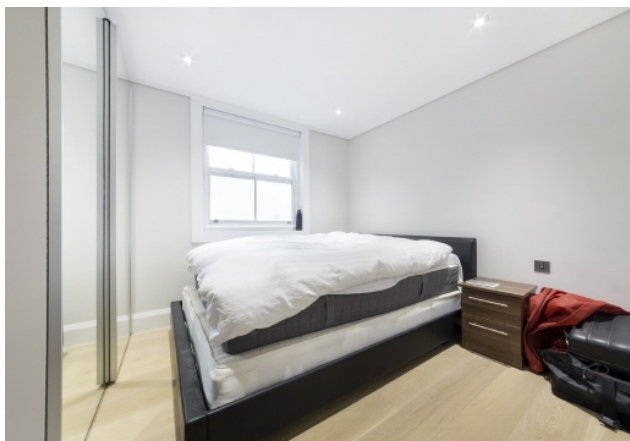
Blending modern sophistication and serene comfort, this double-bedroom apartment is finished with high-end furnishings, modern kitchen appliances, and breathtaking views of private gated gardens.

- One Bedroom
- 5th floor
- 434 sq. ft
- Fully Furnished
- Hyde Park
- EPC Rating C

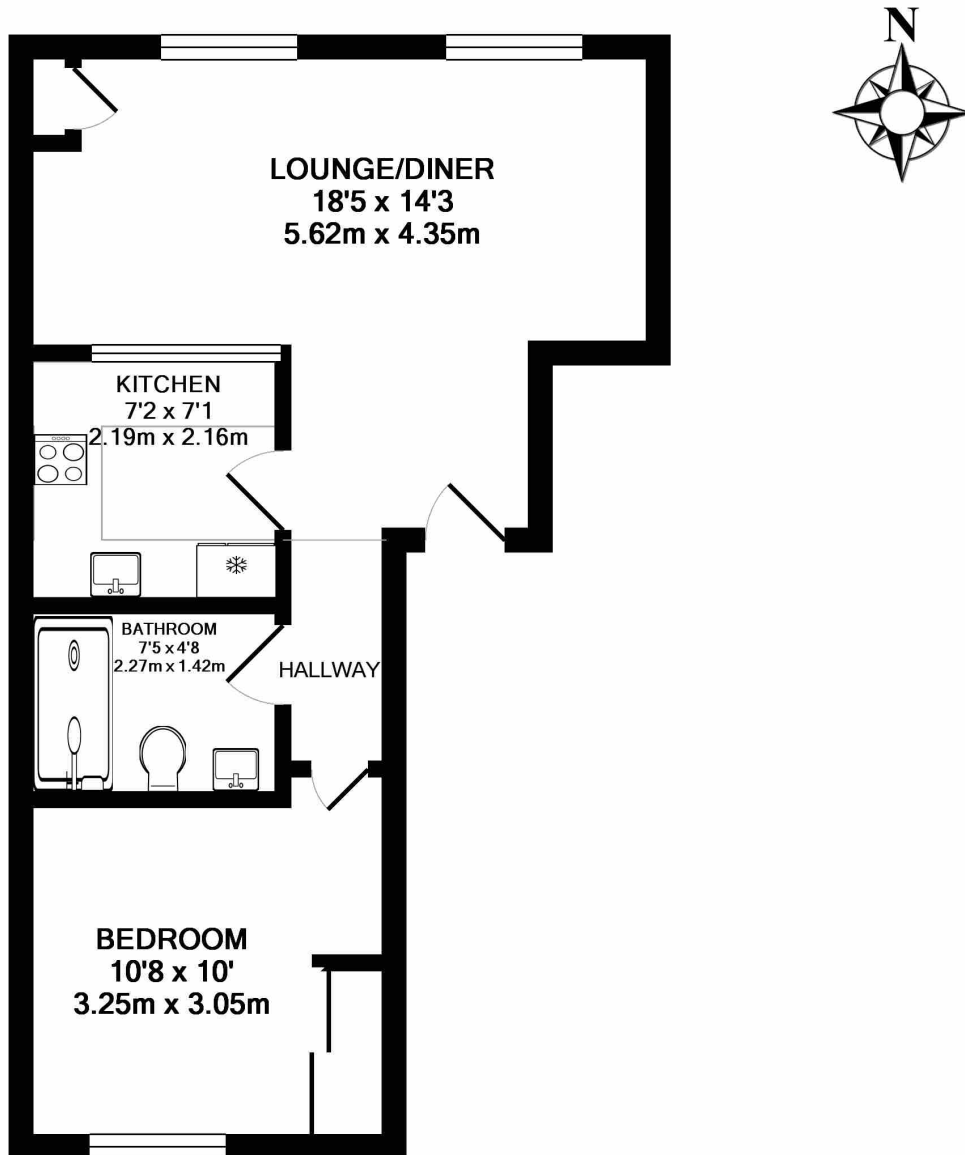


ABOUT THE HOME

In the heart of Notting Hill, this property is situated between the local amenities of Portobello and the Hyde Park area. Notting Hill Gate station (Central, Circle and District Lines) and Ladbroke Grove station (Circle and Hammersmith & City Lines) are a short walk away.







TOTAL APPROX. FLOOR AREA 434 SQ.FT. (40.3 SQ.M.)

Whilst every attempt has been made to ensure the accuracy of the floor plan contained here, measurements of doors, windows, rooms and any other items are approximate and no responsibility is taken for any error, omission, or mis-statement. This plan is for illustrative purposes only and should be used as such by any prospective purchaser. The services, systems and appliances shown have not been tested and no guarantee as to their operability or efficiency can be given
Made with Metropix ©2017

LiFE RESIDENTIAL

203 Trentham Court, Victoria
Road, London, W3 6BT
Sales: 020 3668 1112
Lettings: 020 3668 1111

Energy Rating: C. We aim to make our particulars both accurate and reliable. However they are not guaranteed; nor do they form part of an offer or contract. If you require clarification on any points then please contact us, especially if you're traveling some distance to view. Please note that appliances and heating systems have not been tested and therefore no warranties can be given as to their good working order.