



Marksbury Avenue, TW9

£299,999

Offers In Excess Of

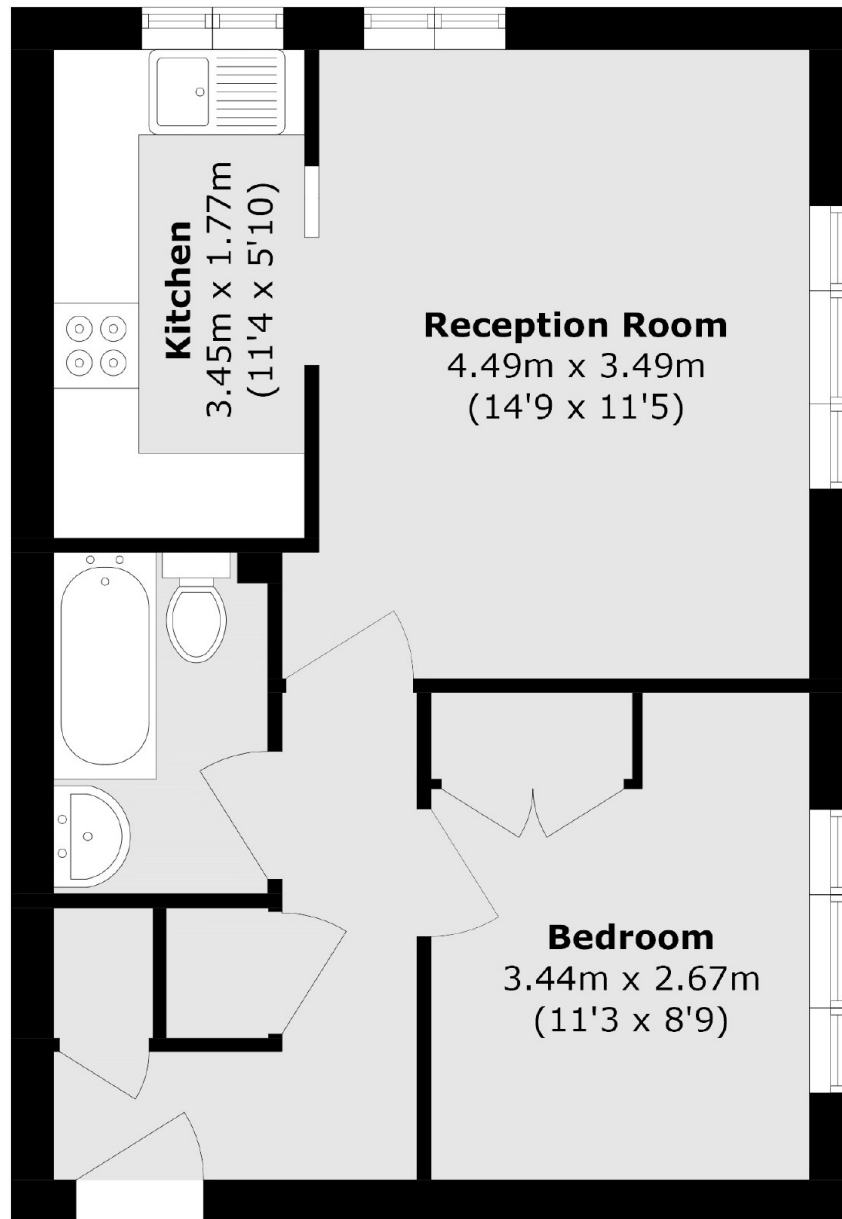
Situated within a gated development built by St. Georges Plc is this well presented first floor purpose built apartment offering approximately 457 sq ft of bright and spacious accommodation. The property is ideally located for Richmond Park and Royal Botanic Gardens Kew.

Cranleigh Court, Marksbury Avenue is well positioned for a number of outstanding Ofsted rated schools including Marshgate and Holy Trinity. The commuter is equally well catered for with 0.4m/10 min walk to North Sheen station into Waterloo and 0.6m/13 min walk to Kew Gardens station District Line/London Overground.

Features

- No Onward Chain
- Allocated Parking
- Double Bedroom
- Fitted Kitchen
- Close To Rail Stations
- Low Service Charge

Marksbury Avenue, Kew, TW9



Total area (approx.): 42.5 sq. m (457.4 sq. ft)