



Pinkmove

## Skye Grove

£200,000

- Two Double Bedroom Mid Terrace
- Downstairs WC
- Open Plan Living
- Enclosed Rear Garden
- Allocated Parking
- Close to Local Amenities
- EPC Rating: B



Pinkmove



Pinkmove

01633 746088  
team@pinkmove.co.uk



## About the property

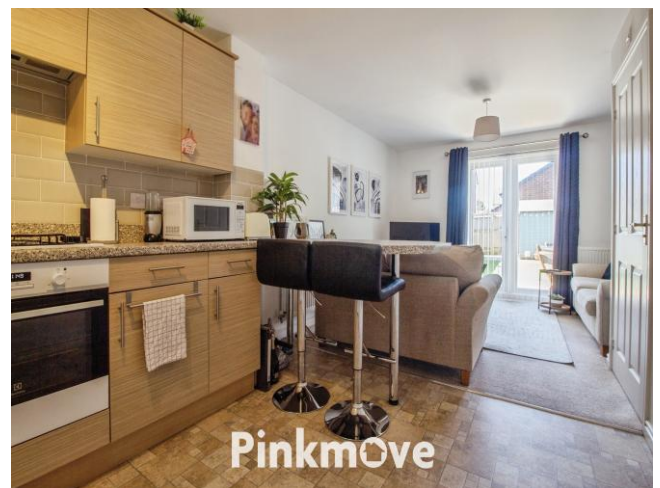
Nestled in a sought-after location, this beautifully maintained mid-terraced home offers the perfect balance of comfort, style, and convenience. With easy access to local amenities including a supermarket, Tredegar House, and The John Frost School, plus excellent road links, this property is ideal for those seeking a well-connected yet peaceful retreat.

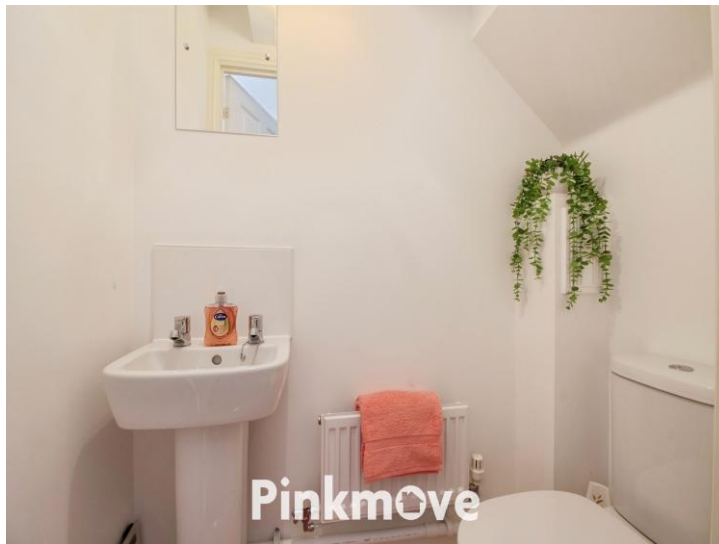
Step inside to discover a modern and thoughtfully designed interior. The open-plan living, dining, and kitchen area creates a spacious and inviting atmosphere-perfect for entertaining or simply unwinding after a long day. The contemporary kitchen, bathed in natural light, is truly the heart of the home, making meal preparation a joy.

Upstairs, you'll find two generously sized double bedrooms, providing ample space for a growing family, a couple, or even a home office. A convenient downstairs WC adds to the home's practicality, ensuring everyday comfort.

Beyond the interiors, the property boasts a charming enclosed rear garden with back access-an ideal spot to relax, host gatherings, or indulge in a bit of gardening. An allocated parking space ensures you'll never have to worry about finding a spot for your car.

This stylish and welcoming home is ready for its next lucky owner to move in and make it their own. Could this be the one for you?





## Accommodation

### Lounge/Kitchen

21' 9" x 12' ( 6.63m x 3.66m )

Max Measurements

### Cloakroom

4' 9" x 2' 6" ( 1.45m x 0.76m )

Max Measurements

### Bedroom 1

7' 5" x 12' 3" ( 2.26m x 3.73m )

Max Measurements

### Bedroom 2

7' 5" x 12' 1" ( 2.26m x 3.68m )

Max Measurements

### Bathroom

5' 9" x 5' 2" ( 1.75m x 1.57m )

Max Measurements

## Floorplan

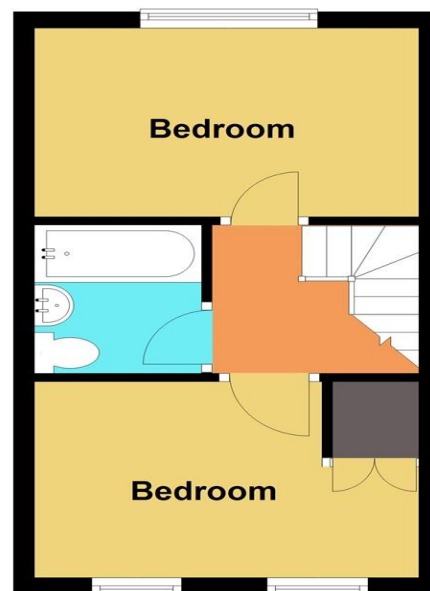
### Ground Floor

Approx. 24.8 sq. metres (267.0 sq. feet)



### First Floor

Approx. 24.9 sq. metres (267.6 sq. feet)



Total area: approx. 49.7 sq. metres (534.6 sq. feet)  
**10 Skye Grove**

## Important Information

Note while we endeavour to make our sales details accurate and reliable, if there is any point which is of particular interest to you, please contact the office and we will be pleased to confirm the position for you. We have not personally tested any apparatus, equipment, fixtures, fittings or services and cannot verify they are in working order or fit for their purposes. Nothing in these particulars is intended to indicate that carpets or curtains, furnishings or fittings, electrical goods (whether wired or not). Gas fires or light fittings or any other fixtures not expressly included form part of the property offered for sale. This computer generated Floorplan, if applicable, is intended as a general guide to the layout and design of the property. It is not to scale and should not be relied upon for dimensions. Tenure: We cannot confirm the tenure of the property as we have not had access to the legal documents. The buyer is advised to obtain verification from their solicitor or surveyor.

Peter Alan Limited is registered in England and Wales under company number 2073153, Registered Office is Cumbria House, 16-20 Hockliffe Street, Leighton Buzzard, Bedfordshire, LU7 1GN. VAT Registration Number is 500 2481 05. For activities relating to regulated mortgages and non-investment insurance contracts, Peter Alan Limited is an appointed representative of Connells Limited which is authorised and regulated by the Financial Conduct Authority. Connells Limited's Financial Services Register number is 302221. Most buy-to-let