



Flat 1 Ely Valley Road

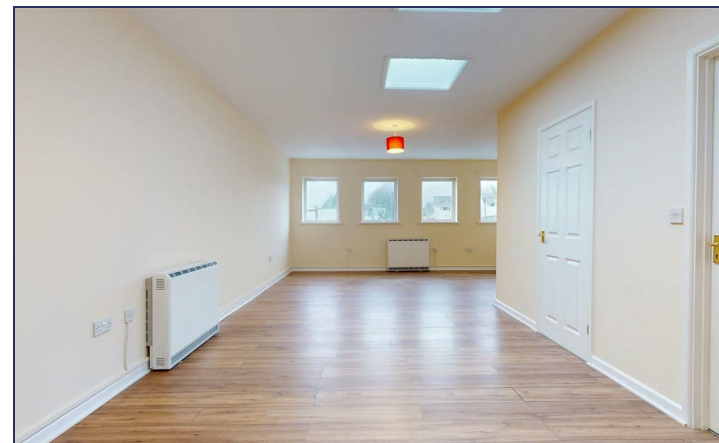
Talbot Green, Pontyclun CF72 8AL

£750 Per Month

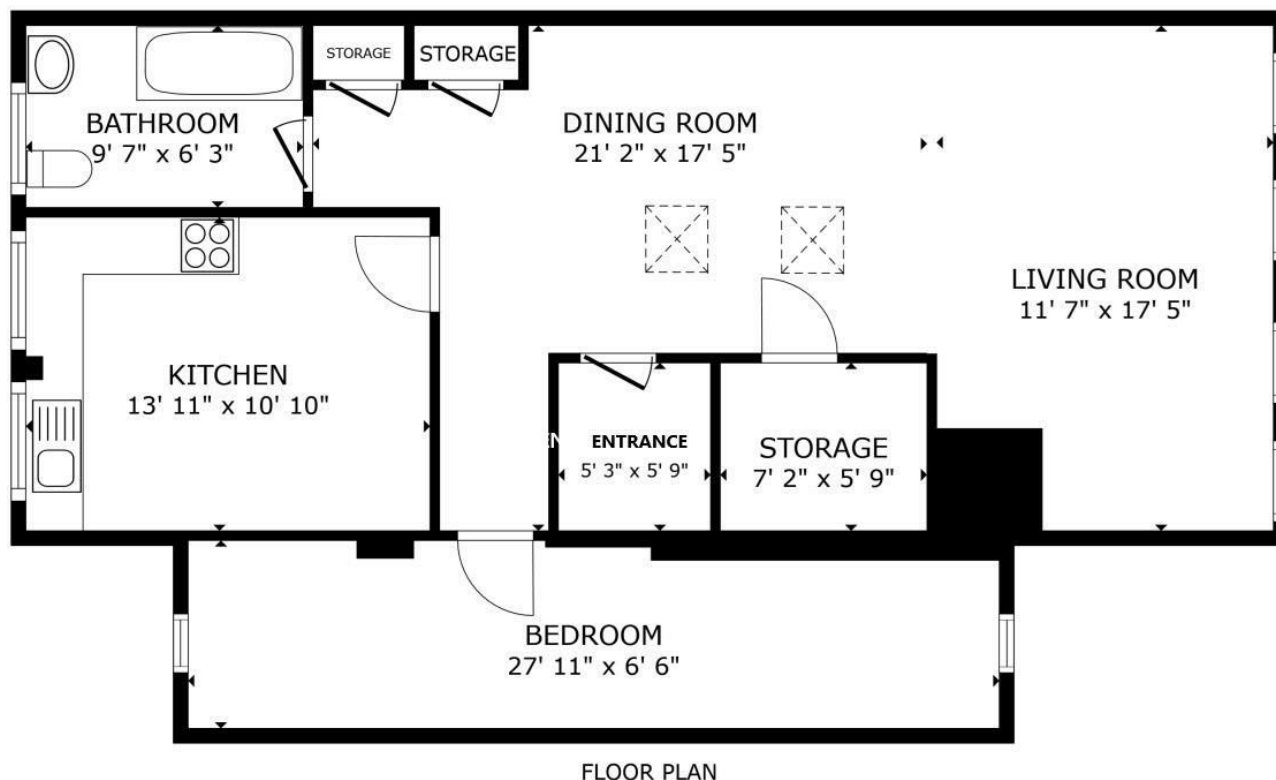
HARRIS & BIRT



A very well presented one bedroom first floor apartment situated in the heart of Talbot Green, within close proximity to all its local amenities as well as public transport links. The accommodation briefly comprises entrance hall, good size lounge, separate kitchen with integral oven, hob and hood. Double bedroom and bathroom/WC with shower over bath. UPVC double glazing. The apartment is offered for rental on an unfurnished basis and is from the 12th of February. EPC rating E. Council tax band A. £750 rental pcm. Deposit of £850.







HARRIS & BIRT

Chartered Surveyors, Land and Estate Agents

Cowbridge

65 High Street, Cowbridge, CF71 7AF

01446 771777 cowbridge@harrisbirt.co.uk

Cardiff

359 Caerphilly Road, Cardiff, CF14 4QF

02920 614411 cardiff@harrisbirt.co.uk

harrisbirt.co.uk

Harris & Birt is the trading name of Ingram Evans Care Ltd. Registered Office: 359 Caerphilly Road, Cardiff, CF14 4QF. Company No: 04845507

You may download, store and use the material for your own personal use and research. You may not republish, retransmit, redistribute or otherwise make the material available to any party or make the same available on any website, online service or bulletin board of your own or of any other party or make the same available in hard copy or in any other media without the website owner's express prior written consent. The website owner's copyright must remain on all reproductions of material taken from this website.

Energy Efficiency Rating		
	Current	Potential
Very energy efficient - lower running costs		
(92 plus) A		
(81-91) B		
(69-80) C		
(55-68) D		
(39-54) E		
(21-38) F		
(1-20) G		
Not energy efficient - higher running costs		
England & Wales	EU Directive 2002/91/EC	

Environmental Impact (CO ₂) Rating		
	Current	Potential
Very environmentally friendly - lower CO ₂ emissions		
(92 plus) A		
(81-91) B		
(69-80) C		
(55-68) D		
(39-54) E		
(21-38) F		
(1-20) G		
Not environmentally friendly - higher CO ₂ emissions		
England & Wales	EU Directive 2002/91/EC	

