



Price
£440,000

Freehold

3x  1x  1x 

**Wentworth Avenue,
Margate, Kent, CT9**

Wards
Helping you move forwards



Main features

- Prime location
- Exceptional living space
- Large conservatory, a great place for relaxing after a long day or entertaining
- A great family home
- Boasts a private driveway

Accommodation

GROUND FLOOR

- Porch
- Entrance Hallway
- Cloakroom
- Lounge : 16'0 x 11'2 (4.88m x 3.41m)
- Dining Room : 13'1 x 10'4 (3.99m x 3.15m)
- Kitchen : 9'6 x 9'1 (2.90m x 2.77m)
- Conservatory : 19'8 x 13'9 (6.00m x 4.19m)

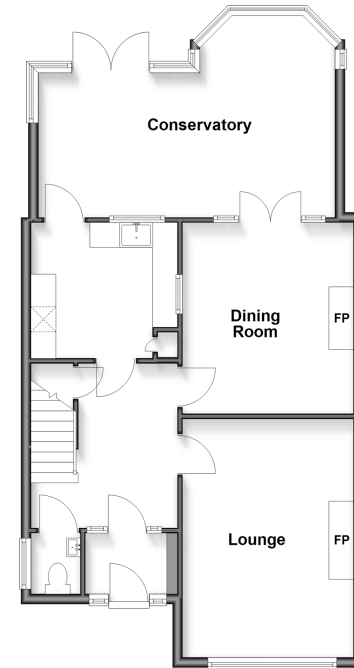
FIRST FLOOR

- Landing
- Bedroom 1 : 15'7 x 11'3 (4.75m x 3.43m)
- Bedroom 2 : 12'4 x 11'11 (3.76m x 3.63m)
- Bedroom 3 : 12'0 x 9'6 (3.66m x 2.90m)
- Bathroom

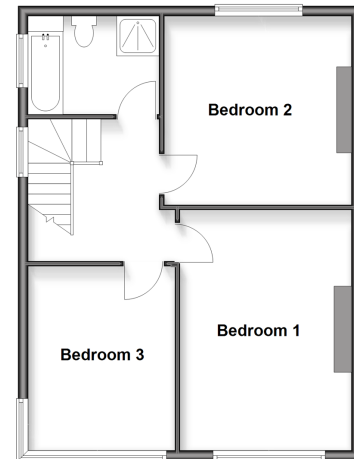
OUTSIDE

- Off Road Parking
- Garden to Rear

Ground Floor
Approx. 71.9 sq. metres (774.0 sq. feet)



First Floor
Approx. 56.2 sq. metres (605.1 sq. feet)



10130083/20260325/RW/AT

Call Birchington - 01843 842551 ■ wardsof Kent.co.uk