



TONKS
THE PROPERTY PEOPLE
POWERED BY
exp UK

Century Way, Halesowen, B63 2TQ

Offers In Region Of £150,000

🛏️ 2 🪑 2 🚗 1



Modern Two Bedroom Ground Floor Apartment – No Chain – Century Way, Halesowen, B63

Situated on the ever-popular Century Way in Halesowen, this well-presented two bedroom ground floor apartment offers spacious and modern living, available with no upward chain and ready to move straight into. Ideal for first-time buyers, downsizers or investors, the property combines comfort, convenience and practicality in a sought-after residential location.

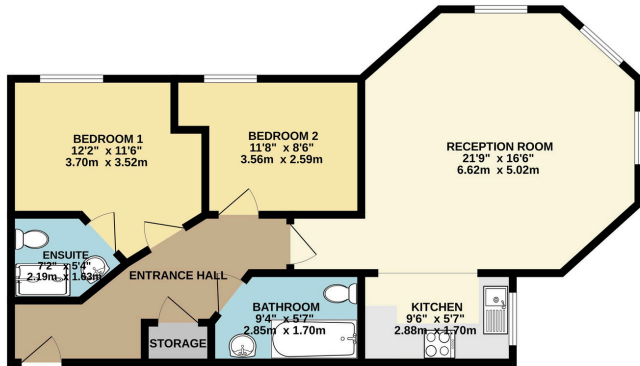
The apartment briefly comprises a welcoming entrance hallway leading through to a generous and light-filled lounge/diner, providing ample space for both relaxing and entertaining. The modern fitted kitchen is well appointed with an integrated oven and hob, complemented by plenty of storage space and worktop area, making it both functional and stylish. There are two well-proportioned bedrooms, with the master benefiting from its own en-suite shower room, while a separate family bathroom serves the remainder of the property. Gas central heating runs throughout, ensuring warmth and efficiency all year round.

Externally, the property benefits from allocated parking, offering convenience and peace of mind for residents and visitors alike. With approximately 105 years remaining on the lease, an EPC rating of C and Council Tax Band B, this home presents an excellent opportunity for those looking for a low-maintenance property in a desirable area.

Century Way is ideally positioned within Halesowen (B63), providing easy access to a wide range of local amenities, shops and supermarkets, along with well-regarded schools and leisure facilities. Halesowen town centre is just a short distance away, offering a mix of independent retailers, cafés and larger stores. The area is also well connected for commuters, with excellent transport links and convenient access to the M5 motorway network, making travel into Birmingham and the wider West Midlands straightforward. Nearby parks and green spaces further enhance



GROUND FLOOR
694 sq.ft. (64.5 sq.m.) approx.

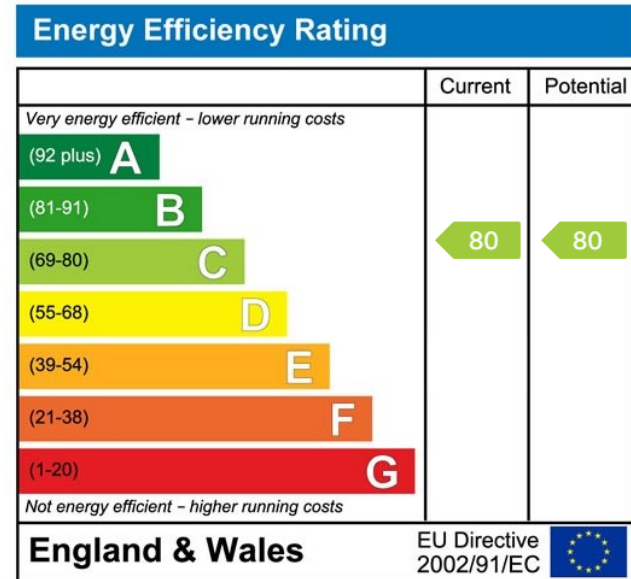


TOTAL FLOOR AREA: 694 sq.ft. (64.5 sq.m.) approx.
While every effort has been made to ensure the accuracy of the floorplan contained herein, measurements of doors, windows, rooms and any other items are approximate and no responsibility is taken for any error, omission or misstatement. This plan for guidance purposes only and should not be used as such by any prospective purchaser. The purchaser should always check the actual dimensions and to guarantee as to their accuracy or efficiency can be given.
Made with MyPlan 12/20

- NO CHAIN
- Modern 2 Bed Apartment
- En-Suite To Master
- EPC: C
- 105 Years Lease Remaining
- Ground Floor
- Allocated Parking
- Spacious Living Throughout
- Council Tax: B



TONKS
THE PROPERTY PEOPLE
exp UK



TONKS
THE PROPERTY PEOPLE
0121 221 2204

aarontonks.co.uk
aaron.tonks@exp.uk.com