



201 Havelock Street
Kettering, NN16 9QB



Simpson & Partners

NO CHAIN

Situated on Havelock Street, this mid-terrace house offers a perfect blend of character and modern living. Built in 1900, this property features three well-proportioned bedrooms, making it an ideal home for families or those seeking extra space.

Upon entering, you are welcomed by a porch that leads into a spacious entrance hall. The open-plan lounge and dining area create a warm and inviting atmosphere, perfect for entertaining guests or enjoying quiet evenings at home. The kitchen is equipped with a built-in oven and hob, providing a functional space for culinary pursuits.

Upstairs, you will find three bedrooms, two of which boast original feature fireplaces, adding a touch of historical charm to the property. The gas radiator central heating ensures a cosy environment throughout the colder months.

The rear garden is mainly laid to lawn and surrounded by a timber fence and brick wall, offering privacy and a perfect spot for children to play or for gardening enthusiasts to cultivate their green fingers.

£159,995



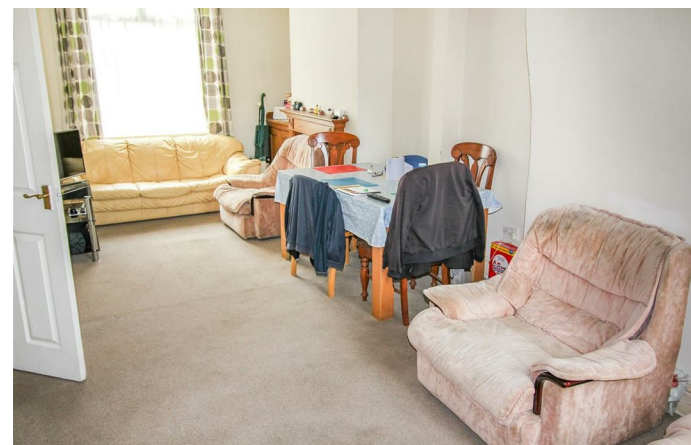
3



1



1



GROUND FLOOR



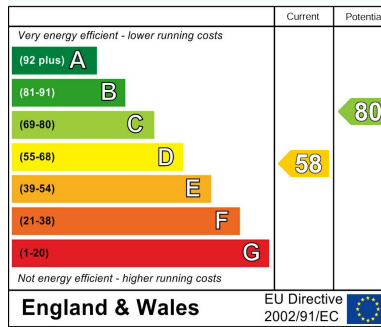
1ST FLOOR



Whilst every attempt has been made to ensure the accuracy of the floor plan contained here, measurements of doors, windows, rooms and any other items are approximate and the responsibility is taken for any error, omission, or mis-statement. The plan is copyright to Simpson and Partners and is for illustrative purposes and should only be used in hand by any prospective purchaser. The services, systems and appliances shown have not been used to guarantee us to their operability can be given. Made with Metreplan (2008)



Energy Efficiency Rating



When you buy with Simpson and Partners, you know **you'll be in safe hands**. From the moment you walk through our doors, we'll make you **feel truly welcome**. Our sales consultants and financial advisors will take you through **every step of the process**, offering **free expert advice** along the way, from help choosing the right mortgage and insurance through to finding your conveyancer. And if you need help selling your home too, **with over 20 years of local experience, you can trust us to get you moving**.



**Simpson
& Partners**

Making Every
Journey Personal



01536 518200

kettering@simpsonandpartners.co.uk

<https://www.simpsonandpartners.co.uk/>

1 Silver Street, Kettering, Northants, NN16 0BN