



## RED LION COURT, EC4A

£2,550 pcm

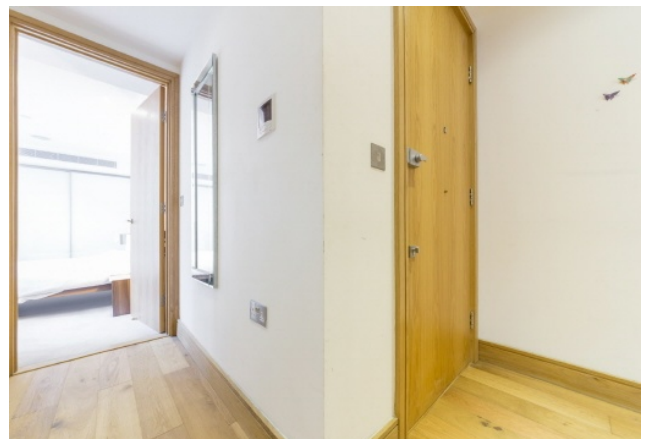
This modern one bedroom apartment provides sophisticated City living, with air cooling throughout, under-floor heating and current video entry technology.

- Available 22nd May
- One bedroom / One bathroom
- Fully Furnished
- Approx 482 sq/ft
- Comfort cooling
- Under-floor heating

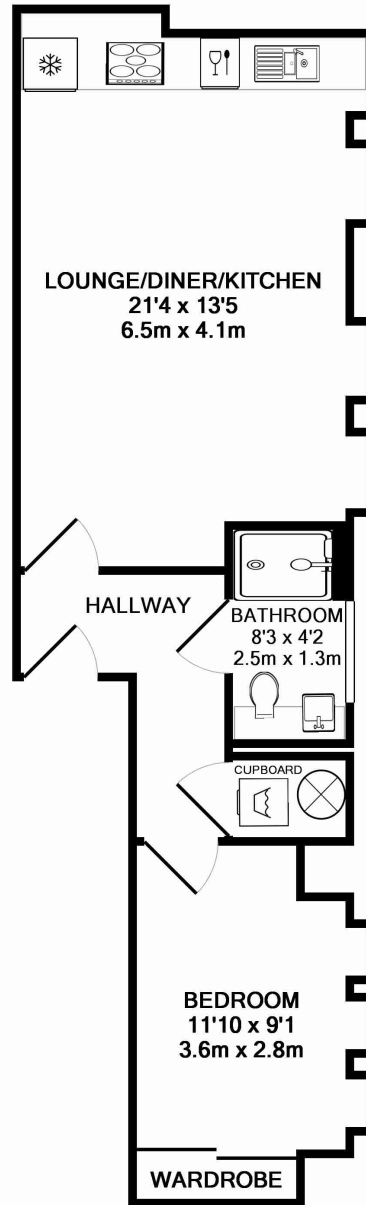


## ABOUT THE HOME

Not only is the development close to a selection of local bars and restaurants, but also the underground connections at Chancery Lane, Temple and Blackfriars and Holborn stations which provide impressive links into the City and West End. City Thamelink station is also nearby for services outside of London.







TOTAL APPROX. FLOOR AREA 482 SQ.FT. (44.7 SQ.M.)

Whilst every attempt has been made to ensure the accuracy of the floor plan contained here, measurements of doors, windows, rooms and any other items are approximate and no responsibility is taken for any error, omission, or mis-statement. This plan is for illustrative purposes only and should be used as such by any prospective purchaser. The services, systems and appliances shown have not been tested and no guarantee as to their operability or efficiency can be given  
Made with Metropix ©2013

**LiFE RESIDENTIAL**

71 Drayton Park, London, N5

1BF

Sales: 020 3838 8666

Lettings: 020 7359 4488

Energy Rating: B. We aim to make our particulars both accurate and reliable. However they are not guaranteed; nor do they form part of an offer or contract. If you require clarification on any points then please contact us, especially if you're traveling some distance to view. Please note that appliances and heating systems have not been tested and therefore no warranties can be given as to their good working order.