



hamlyn
smith.

Goldstone Road, Hove, BN3 3RP

£450,000

hamlyn smith.

 3 Bedrooms

 2 Receptions

 2 Bathrooms

Nestled on the charming Goldstone Road in Hove, this delightful three-bedroom maisonette, built in 1890, offers a perfect blend of period features and modern living. Spanning an impressive 1,109 square feet, the property boasts a raised ground floor layout that is both practical and inviting.

- Spacious 3 double bedroom Maisonette
- Own entrance
- Large lounge/dining room
- Separate well-fitted kitchen
- Period building charm
- Close to Hove station
- Popular Poets Corner area
- Viewing recommended





-  50 Goldstone Villas, Hove, BN3 3RS
-  01273 762222
-  hello@hamlynsmith.co.uk

Upon entering, you are greeted by a spacious entrance hallway that leads to all ground floor rooms. The highlight of the home is the expansive lounge/dining room, measuring 25 feet into the bay and 14 feet 8 inches wide. This beautifully combined space features a large bay window that floods the room with natural light, creating a warm and welcoming atmosphere. The designated dining area, with its south-facing window, is perfect for entertaining or family meals.

The kitchen, also bright and south-facing, is well-equipped with wood effect cupboards, a four-ring gas hob, and ample space for modern appliances, making it a functional space for culinary enthusiasts. A convenient ground floor WC adds to the practicality of the home.

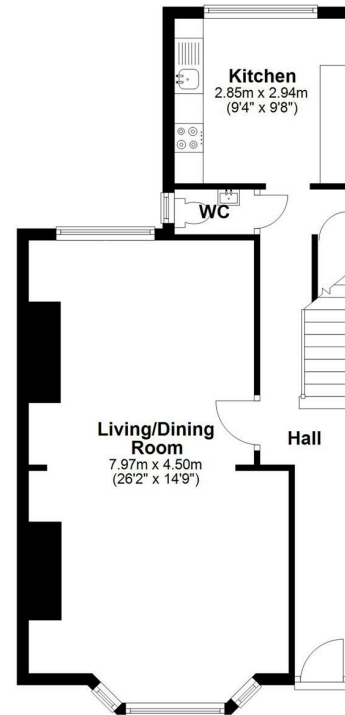
Moving to the first floor, you will find a landing that leads to three well-proportioned bedrooms. The master bedroom features built-in storage and two windows, ensuring a light and airy feel. The second and third bedrooms are equally spacious, each with large windows and ample room for furniture.

The modern bathroom is fitted with a stylish white suite, including a panelled bath and a contemporary sink, providing a serene space for relaxation.

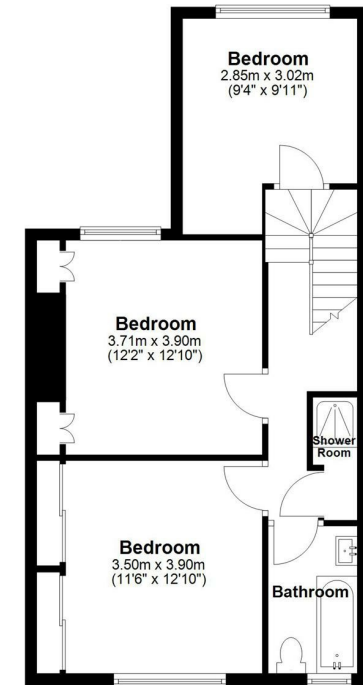
This property is not only a wonderful family home but also a fantastic opportunity to enjoy the vibrant lifestyle that Hove has to offer. With its blend of character and comfort, this house is sure to appeal to a variety of buyers looking for a place to call home.



Ground Floor



First Floor



Total area: approx. 106.0 sq. metres (1141.3 sq. feet)

Whilst every attempt has been made to ensure the accuracy of the floor plan contained here, measurements of doors, windows, rooms and any other items are approximate and no responsibility is taken for any error, omission or mis-statement. This plan is for illustrative purposes only and should be used as such by any prospective purchaser. The services, systems and appliances shown have not been tested and no guarantee as to their operability or efficiency can be given.
Plan produced using PlanUp.

