



Guide Price
£400,000

Freehold

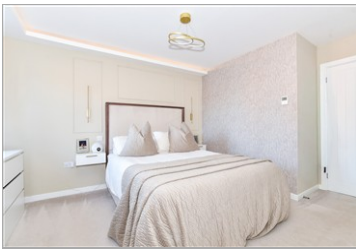
3x  1x  1x 

**Pentecost Lane, Otham,
Maidstone, Kent ME15**

OVER 60?

Secure this property
for up to **59% less!**

Wards
Helping you move forwards



Main features

- Offered chain free
- 2 year NHBC guarantee remaining
- Immaculate condition throughout, landscaped rear garden
- Large kitchen/diner with lounge to rear
- Close proximity to schools and local amenities

Accommodation

GROUND FLOOR

Entrance Hall: 17'0 x 3'0 (5.19m x 0.92m)
 Cloakroom: 6'10 x 3'0 (2.08m x 0.92m)
 Garage (Used as a gym): 18'0 x 9'0 (5.49m x 2.75m)
 Lounge: 16'0 x 12'0 (4.88m x 3.66m)
 Kitchen/Diner: 19'11 x 9'0 (6.07m x 2.75m)

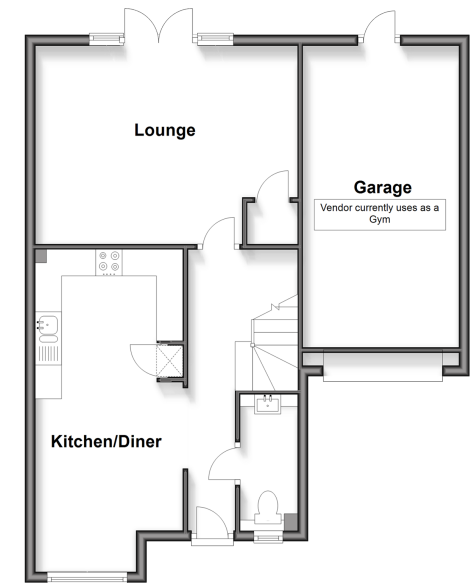
FIRST FLOOR

Landing: 8'0 x 4'0 (2.44m x 1.22m)
 Bedroom 1: 12'0 x 10'0 (3.66m x 3.05m)
 En-Suite Shower Room: 7'0 x 3'10 (2.14m x 1.17m)
 Bedroom 2: 12'0 x 7'0 (3.66m x 2.14m)
 Bedroom 3: 8'0 x 8'0 (2.44m x 2.44m)
 Bathroom

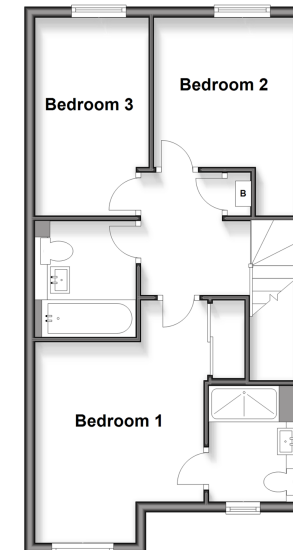
OUTSIDE

Rear Garden
 Front Garden
 Driveway

Ground Floor
 Approx. 65.5 sq. metres (705.0 sq. feet)



First Floor
 Approx. 47.0 sq. metres (506.1 sq. feet)



Call Bearsted - 01622 730955 ■ wardsof Kent.co.uk

- If buying to let, the energy rating will need to be improved to at least 'E' rating before you can let the property
- Legal advice should be taken to verify fixtures/fittings, planning, alterations and/or lease details
- Appliances & services are untested, dimensions are approximate and floor plans are not to scale
- Through a Homewise Home For Life Plan people aged 60+ can secure this property for up to 59% less, by purchasing a Lifetime Lease



12329381/20260117/SG/LNR