



# GREENDOOR PROPERTY



## 42A Regent Street Stotfold, Hitchin, SG5 4EA

This property is offered for sale CHAIN FREE. Located close to the centre of Stotfold, this freshly decorated detached bungalow offers a perfect blend of comfort and convenience. Spanning an inviting 366 square feet, this property is ideal for those seeking a cosy living space with a touch of modernity.

As you enter, you will be greeted by a light and bright reception room, enhanced by newly installed Velux windows that flood the space with natural light. The bungalow features one well-proportioned bedroom with new carpet, providing a peaceful retreat for rest and rejuvenation.

For those with a vehicle, the property boasts off-street parking for one car, ensuring ease of access and added convenience. The location is also a significant advantage, with local amenities and transport links within easy reach, making it an ideal choice for both first-time buyers and those looking to downsize.

This bungalow presents a wonderful opportunity to enjoy a comfortable lifestyle in a sought-after area. Whether you are looking to make it your home or an investment, this property is sure to impress. Do not miss the chance to view this delightful residence.

**£160,000**

# 42A Regent Street

Stotfold, Hitchin, SG5 4EA



## Lounge

19'0" x 9'7" (5.8 x 2.93)

## Kitchen

5'10" x 5'8" (1.79 x 1.74)

## Bedroom

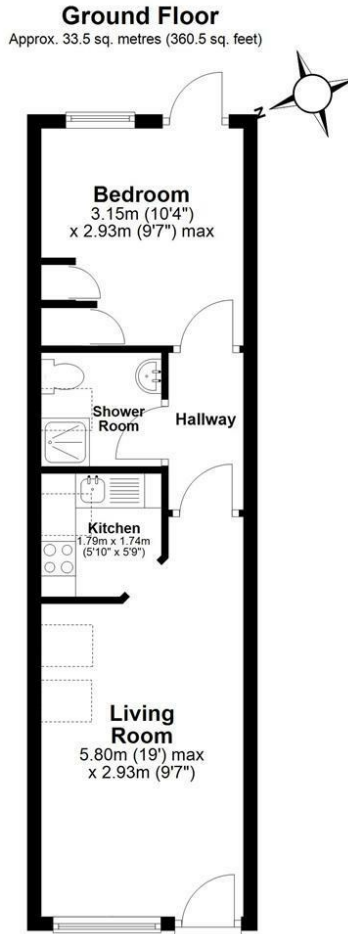
10'4" x 9'7" (3.15 x 2.93)



[Directions](#)



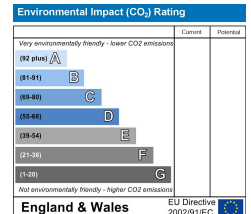
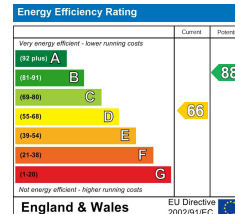
# Floor Plan



Total area: approx. 33.5 sq. metres (360.5 sq. feet)

Floor Plan measurements are approximate & for illustrative purposes only. While we do not doubt the floor plans accuracy, we make no guarantee, warrant or representation as to the accuracy and completeness of the floor plan.  
Plan produced using PlanUp.

Every care has been taken with the preparation of these particulars, but complete accuracy cannot be guaranteed. If there is any point, which is of particular importance to you, please obtain professional confirmation. Alternatively, we will be pleased to check the information for you. These Particulars do not constitute a contract or part of a contract. All measurements quoted are approximate. The Fixtures, Fittings & Appliances have not been tested and therefore no guarantee can be given that they are in working order. Photographs are reproduced for general information and it cannot be inferred that any item shown is included in the sale.



**Green Door**  
3 Maiden Street  
Weston  
Hitchin Hertfordshire,  
SG4 7DG  
[info@greendoorpm.co.uk](mailto:info@greendoorpm.co.uk)  
call 01462 510765  
[www.greendoorpm.co.uk](http://www.greendoorpm.co.uk)

