



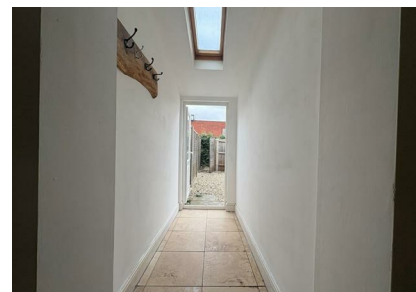
Eden Road, Haverhill, CB9 8DX

Rent - £900 PCM Deposit - £1,038

Situated within easy reach of the town centre, this well-kept two bedroom home offers comfortable and practical living throughout. The ground floor features a bright front-facing lounge alongside a generously sized kitchen diner with ample storage and direct access to the rear garden.

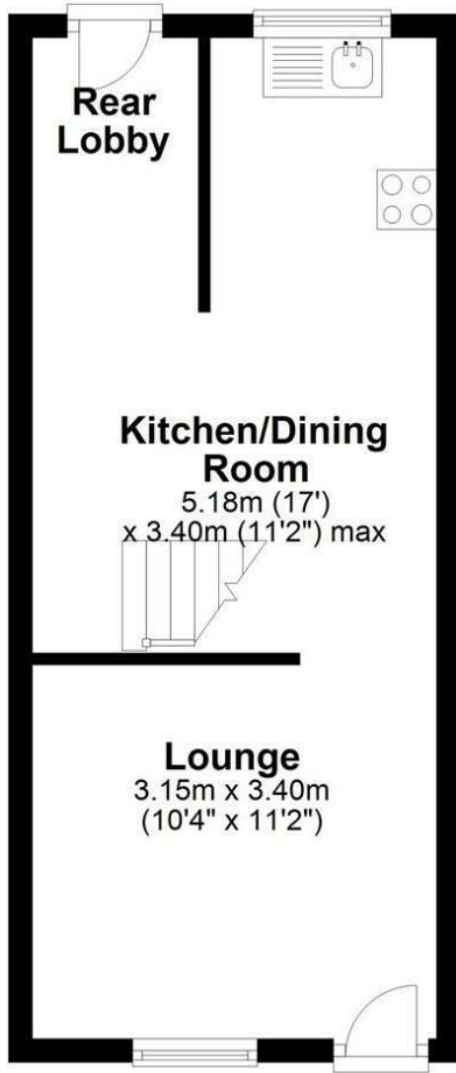
Upstairs, the property comprises two bedrooms and a family bathroom fitted with a bath, WC, and wash basin. Externally, there is an enclosed, easy-to-maintain garden, while permit parking is available to the front. The property is available now and holds an EPC rating of C.

- TWO BEDROOM HOME
- MODERN KITCHEN WITH DINING SPACE
- PRIVATE LOW-MAINTENANCE REAR GARDEN
- WELL PRESENTED THROUGHOUT
- COUNCIL TAX BAND - A
- SPACIOUS LIVING AREA
- FIRST FLOOR FAMILY BATHROOM
- PERMIT PARKING AVAILABLE
- EPC RATING - C
- READY FOR IMMEDIATE OCCUPATION



Council Tax Band: A - EPC Rating: C 70

Ground Floor



First Floor

