



Grebe Close, Calvert, MK18 2FZ
£525,000 Freehold

HUNTERS[®]
EXCLUSIVE



Grebe Close, Calvert, Buckingham MK18 2FZ

A substantial four-bedroom detached home with no onward chain, positioned at the end of a quiet cul de sac in Calvert Green, offering driveway parking for up to six vehicles with EV charging, a detached double garage with gym/workspace conversion, and well-proportioned, flexible accommodation including three reception rooms and a large conservatory.

The accommodation comprises of a spacious hall, cloakroom, study, dining room, kitchen/breakfast room with upgraded units and built-in double oven, living room, large conservatory which was constructed in 2013 and stretches across both the kitchen and living room. On the first floor there are three double bedrooms, with bedroom 1 benefitting from an en-suite shower room. There is a fourth single bedroom and a family bathroom with bath and separate shower cubicle.

The detached double garage has a remote control door and is set back with a long driveway allowing for ample parking. The rear of the garage is currently partitioned and in use as a gym with a personal door to the garden.

There are gardens to both the front and rear, the private and sunny rear garden has gated access to either side and a patio area.

Local amenities in Calvert Green include a general store, thriving community hall with bar and function room and children's play area on the large central green.





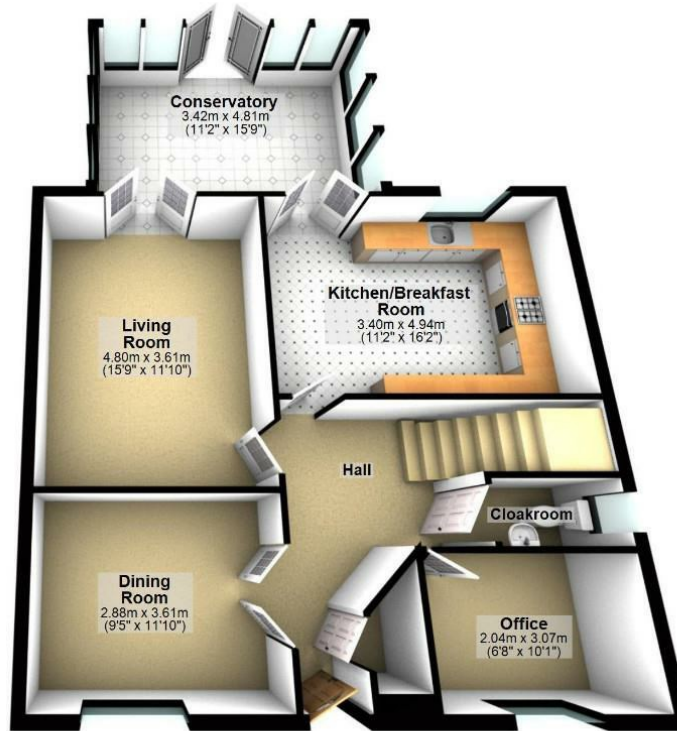
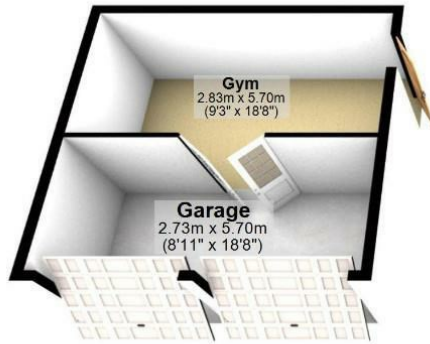




These particulars are intended to give a fair and reliable description of the property but no responsibility for any inaccuracy or error can be accepted and do not constitute an offer or contract. We have not tested any services or appliances (including central heating if fitted) referred to in these particulars and the purchasers are advised to satisfy themselves as to the working order and condition. If a property is unoccupied at any time there may be reconnection charges for any switched off/disconnected or drained services or appliances - All measurements are approximate. If you are thinking of selling your home or just curious to discover the value of your property, Hunters would be pleased to provide free, no obligation sales and marketing advice. Even if your home is outside the area covered by our local offices we can arrange a Market Appraisal through our national network of Hunters estate agents.

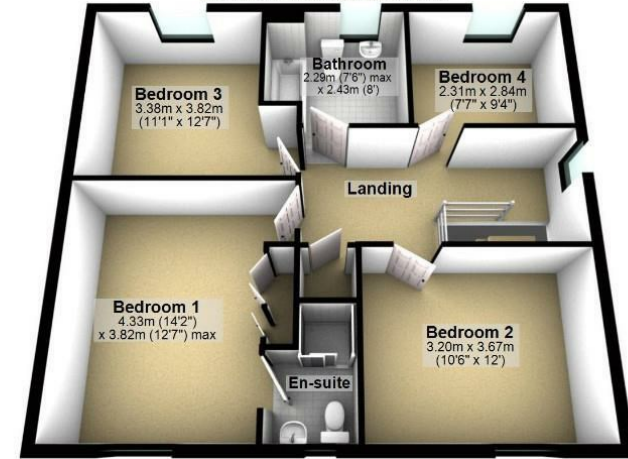
Ground Floor

Approx. 116.4 sq. metres (1253.0 sq. feet)



First Floor

Approx. 64.3 sq. metres (691.9 sq. feet)



Total area: approx. 180.7 sq. metres (1944.9 sq. feet)

Energy Efficiency Rating		Current	Potential
Very energy efficient - lower running costs			
(92 plus) A			
(81-91) B			
(69-80) C		77	81
(55-68) D			
(39-54) E			
(21-38) F			
(1-20) G			
Not energy efficient - higher running costs			
England & Wales		EU Directive 2002/91/EC	

Viewing Arrangements

Strictly by prior appointment only through the agent Hunters Hunters Bicester -
01869 321999 <https://www.hunters.com>

HUNTERS[®]
EXCLUSIVE



HUNTERS[®]
EXCLUSIVE