



**OVER 60?**

Secure this property  
for up to **59% less!**

**Guide Price**  
**£240,000**

**Freehold**

2x  1x  1x 

**Manor Road,  
Queenborough, Kent,  
ME11**

*Wards*  
Helping you move forwards





## Main features

- Driveway to the front
- Garage plus extra parking to the rear
- Short drive to the shops and restaurants at Neats Court
- Great home for a first time buyer
- Newly fitted kitchen with integrated appliances
- French doors leading out onto the rear garden

## Accommodation

### GROUND FLOOR

Entrance Hall

Lounge: 14'0 x 10'8 (4.27m x 3.25m)

Kitchen: (L-shaped) 17'2 x 8'3 (5.24m x 2.52m) plus 12'3 x 5'9 (3.74m x 1.75m)

### FIRST FLOOR

Landing

Bedroom 1: 12'6 x 8'9 (3.81m x 2.67m)

Bedroom 2: 10'4 x 10'0 (3.15m x 3.05m)

Study: 6'5 x 5'7 (1.96m x 1.70m)

Bathroom: 7'8 x 5'7 (2.34m x 1.70m)

### OUTBUILDING

Garage: 22'0 x 9'0 (6.71m x 2.75m)

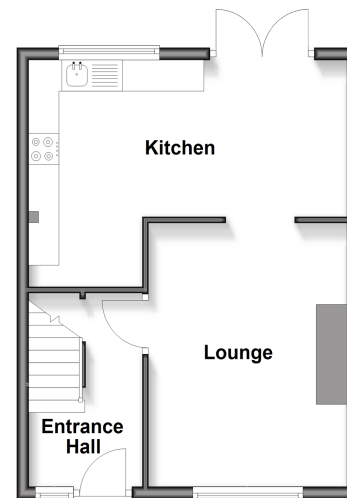
### OUTSIDE

Front Driveway

Rear Garden

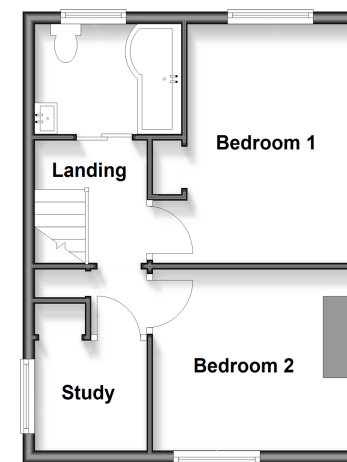
### Ground Floor

Approx. 36.0 sq. metres (387.9 sq. feet)



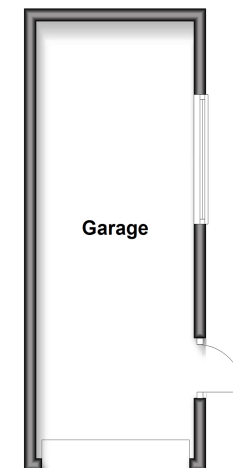
### First Floor

Approx. 36.0 sq. metres (387.9 sq. feet)



### Outbuilding

Approx. 18.2 sq. metres (196.1 sq. feet)



**Call Sheerness - 01795 664651 ■ wardsofkent.co.uk**

- Legal advice should be taken to verify fixtures/fittings, planning, alterations and/or lease details
- Through a Homewise Home For Life Plan people aged 60+ can secure this property for up to 50% less, by purchasing a Lifetime Lease.

- Appliances & services are untested, dimensions are approximate and floor plans are not to scale



11635821/20251202/DS/JLS