



King Charles Road, KT5

£377,950

A bright and spacious first floor apartment located on King Charles Road. This period conversion is larger than average and has impressively high ceilings.

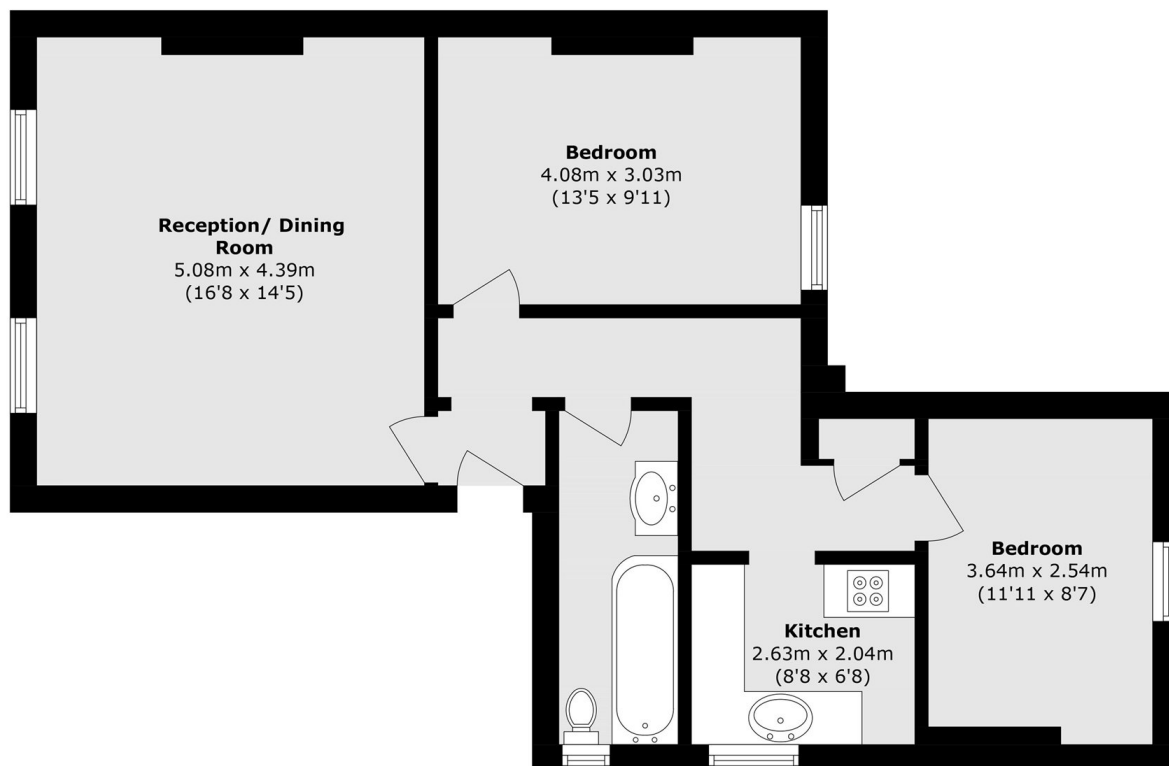
Accommodation includes two double bedrooms, a well proportioned kitchen, large reception room and a bathroom. Further benefits include off street parking, a new lease upon completion and no onward chain.

King Charles Road is centrally located with a vast selection of bars, restaurants and local shops on the doorstep. Surbiton train station is conveniently less than half a mile away and has a quick service in to London Waterloo in 15 minutes.

Features

Period Conversion
Two Double Bedrooms
Allocated Parking
No Onward Chain
First Floor
New Lease Upon Completion

King Charles Road, Surbiton, KT5



Total area (approx.): 66.7 sq. m (718.0 sq. ft)