



LADBROKE SQUARE, W11

£725 per week (£3,141 per month)

A wonderful and bright one bedroom apartment with views over Ladbroke Square.

Period Building

Bright

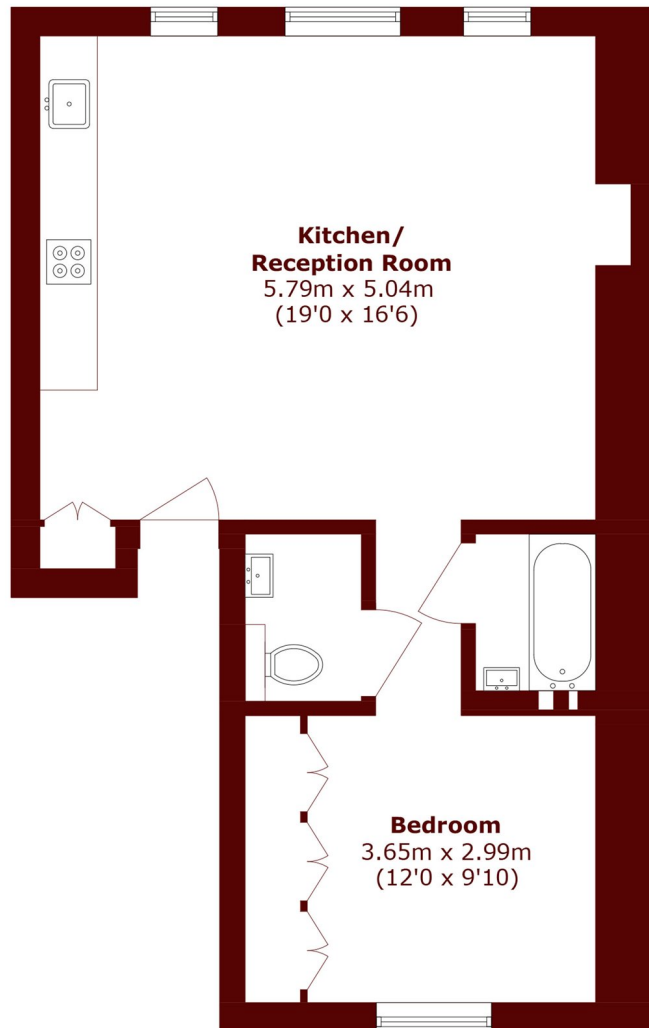
Views over Communal Gardens

Bright reception room

Excellent Storage

Enviably Location

STEP INSIDE LADBROKE SQUARE



Second Floor

Total area (approx.): 51.6 sq. m (555.4 sq. ft)

Notting Hill
020 7313 6910

Energy Rating: C We aim to make our particulars both accurate and reliable. However, they are not guaranteed; nor do they form part of an offer or contract. If you require clarification on any points then please contact us, especially if you're traveling some distance to view. Please note that appliances and heating systems have not been tested and therefore no warranties can be given as to their good working order

MARSH &
PARSONS