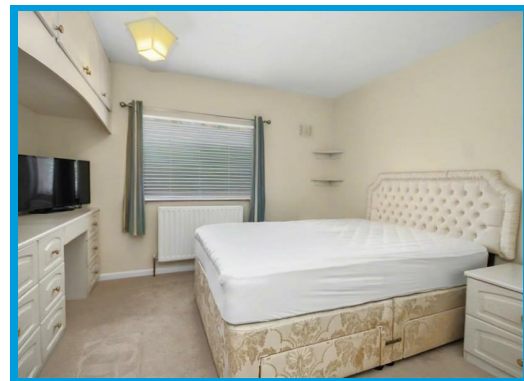




Cabell Road, Guildford, GU2 8JG

£1,700 PCM

A very well presented two double bedroom house that has been redecorated and recarpeted throughout. Located close to Royal Surrey Hospital, Surrey University & Surrey Research Park as well as within easy access to Guildford town centre and the A3.



description

Having been recently redecorated throughout, this two double bedroom house is presented in excellent order throughout.

The accommodation comprises a large lounge, kitchen with appliances, two double bedrooms and a bathroom with shower.

Further benefits include a large, private rear garden.



Energy Efficiency Rating		
	Current	Potential
Very energy efficient - lower running costs		
(92 plus) A		
(81-91) B		
(69-80) C		
(55-68) D		
(39-54) E		
(21-38) F		
(1-20) G		
Not energy efficient - higher running costs		
England & Wales	EU Directive 2002/91/EC	

Environmental Impact (CO ₂) Rating		
	Current	Potential
Very environmentally friendly - lower CO ₂ emissions		
(92 plus) A		
(81-91) B		
(69-80) C		
(55-68) D		
(39-54) E		
(21-38) F		
(1-20) G		
Not environmentally friendly - higher CO ₂ emissions		
England & Wales	EU Directive 2002/91/EC	

