



Ewell Road, KT6

£585,000

A larger than average and immaculately presented three double bedroom ground floor apartment in a secluded and peaceful cul-de-sac.

The property further benefits include a private rear garden, allocated parking, a communal front garden, ample storage throughout and bike storage.

Located in a quiet and secluded cul-de-sac, Pembury Court is under a mile away from both Tolworth and Surbiton mainline train stations with their quick links to London Waterloo in as fast as 16 minutes. There are local shops, bars and restaurants on your doorstep as well as the popular 'Coffee On The Corner' situated close by. Fishponds Park and Alexandra Park are also very local.

Features

- Three Double Bedrooms
- Immaculately Presented
- Private Garden
- Allocated Parking
- Communal Front Garden
- Bike Storage



Ewell Road, KT6

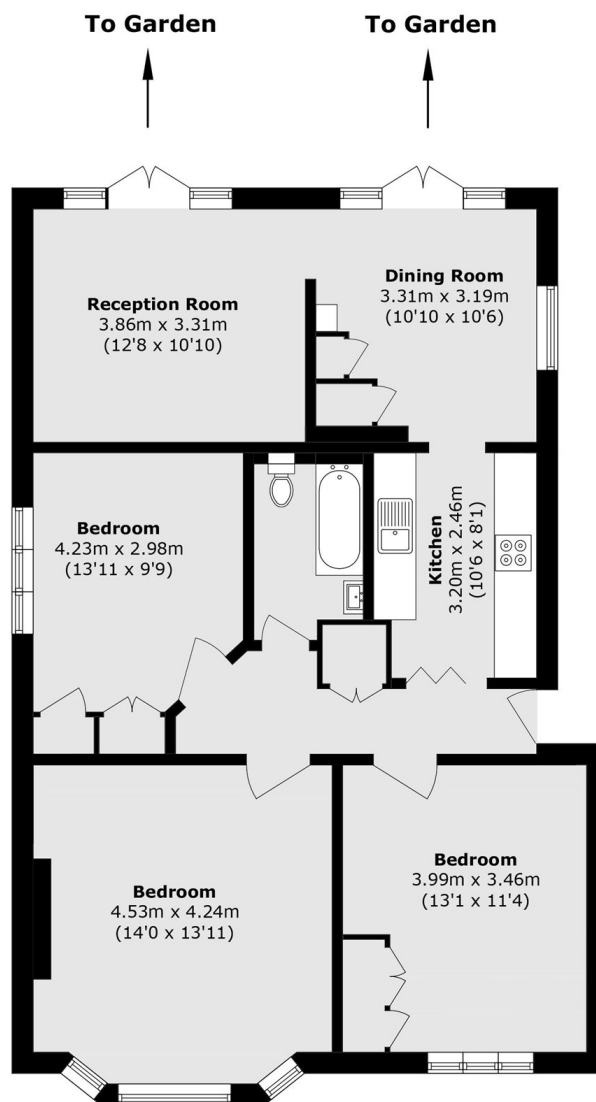
This unique property is set in secluded grounds nestled off the road. It has a bright and spacious reception room, separate dining area, and a recently renovated kitchen.

All three bedrooms are double and two of which have fitted wardrobes. There is plenty of storage throughout the flat and there is also a contemporary bathroom suite.

Further benefits include a pretty private rear garden and isn't overlooked, allocated off street parking, a well maintained communal front garden, side access and bike storage.



Ewell Road, Surbiton, KT6



Total area (approx.): 89.5 sq. m (963.3 sq. ft)