



Felix Road, W13

£699,950

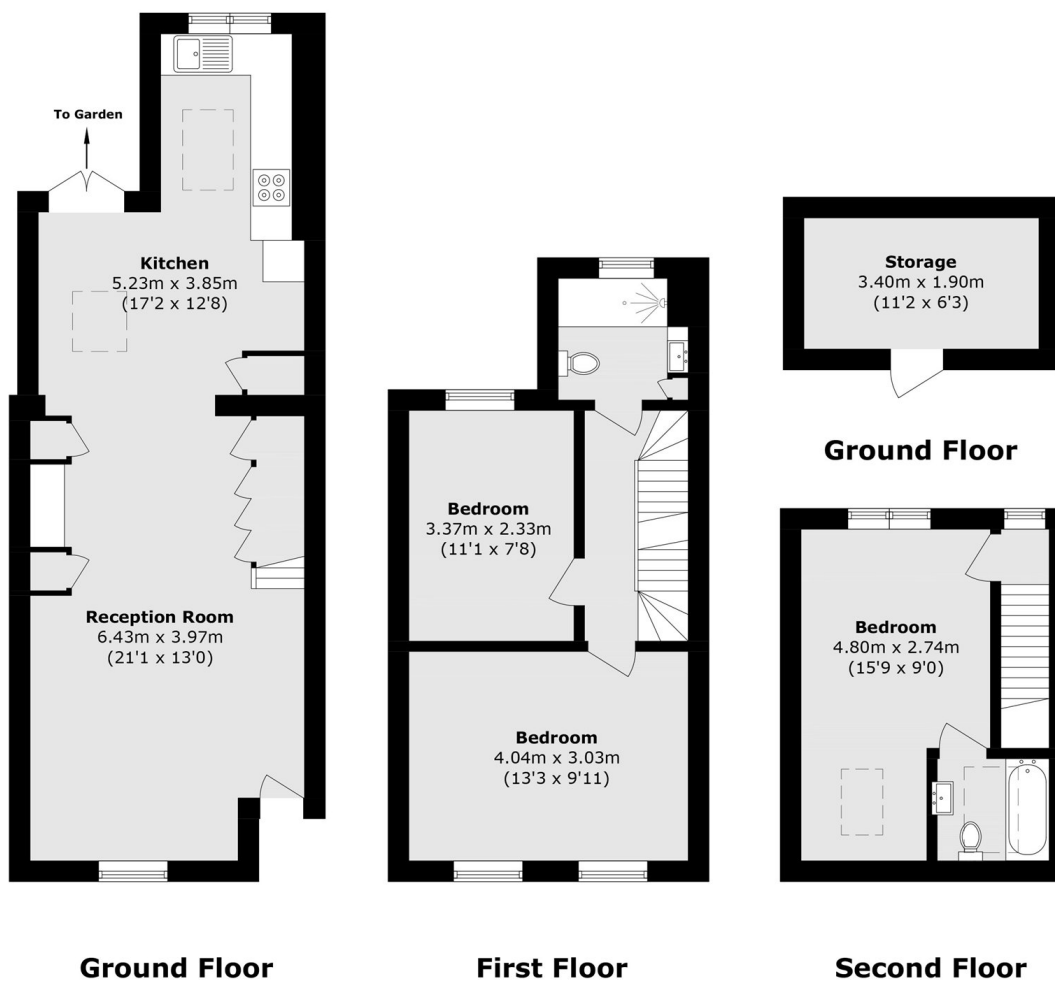
A beautifully presented three-bedroom, two bathroom, Victorian terrace home, thoughtfully loft converted and extended on the ground floor to offer spacious and modern living accommodation throughout. Finished to an excellent standard, the property further benefits from a useful brick-built storage shed.

Ideally located close to West Ealing Station and the Elizabeth Line, offering fast connections to Bond Street Station in approximately 13 minutes and Canary Wharf in around 30 minutes. The property is also conveniently situated near a Waitrose superstore and the highly regarded St John's Primary School, rated Outstanding by Ofsted.

Features

- Three Bedrooms
- Two Bathrooms
- Loft Converted & Extended
- Excellent Condition
- Elizabeth Line
- Outstanding School

Felix Road, London, W13



Total area (approx.): 88.6 sq. m (953.6 sq. ft)
External storage (approx.): 6.4 sq. m (68.8 sq. ft)