



## Woodland Gardens

Isleworth, TW7

£900,000

Set within the highly sought-after Woodland Gardens, this exceptional five-bedroom home offers stylish, spacious living in a quiet family-friendly residential setting. Ideally positioned within easy reach of a choice of well-regarded schools, a short walk to Isleworth station, and convenient local amenities. Beautifully refurbished and thoughtfully extended to an excellent standard, the home is perfectly designed for modern living.

- No Forward Chain
- Driveway Parking
- Five Bedrooms
- Excellent Condition
- Stunning Rear Garden
- Close to Station



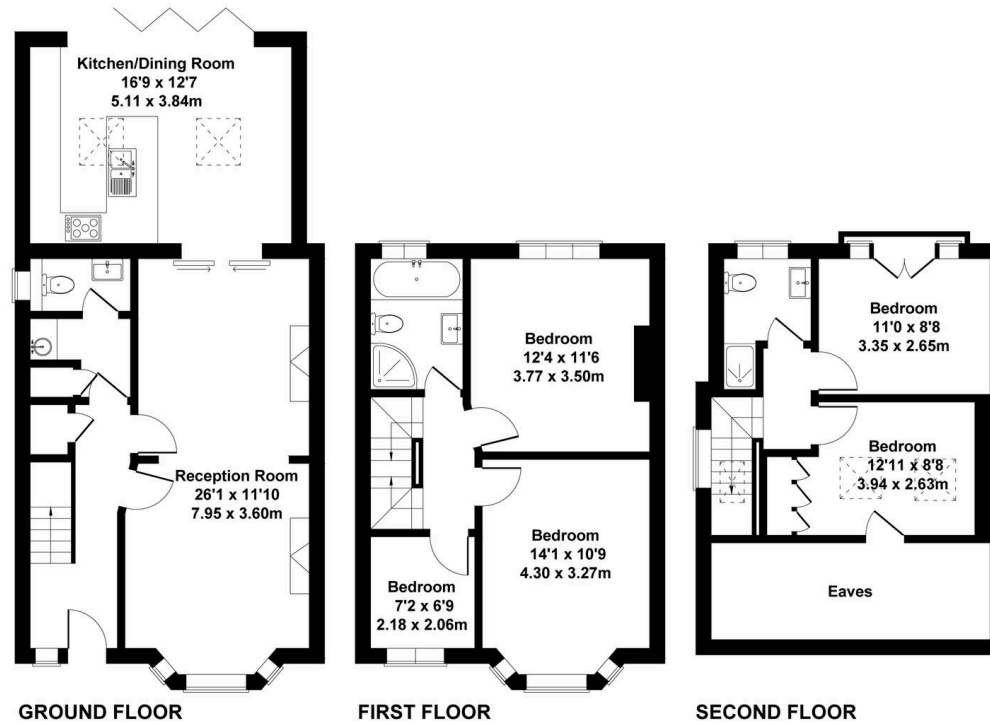
SCAN HERE  
FOR  
PROPERTY  
DETAILS





## Woodland Gardens, Isleworth, TW7

Approximate Gross Internal Area  
Main House 1442 sq ft - 134 sq m



This floorplan is for guidance only and does not form part of an offer or contract.  
Buyers or tenants should verify all details through inspection, searches, and surveys.  
Measurements are approximate and should not be relied upon for valuation or transactions.  
Produced by Plan Portal.  
[www.evolveLondon.co.uk](http://www.evolveLondon.co.uk)

