



St. James Close | Harvington | Evesham | WR11 8PZ

**Guide Price £395,000**

---

COOPER & CO

---

## Key features

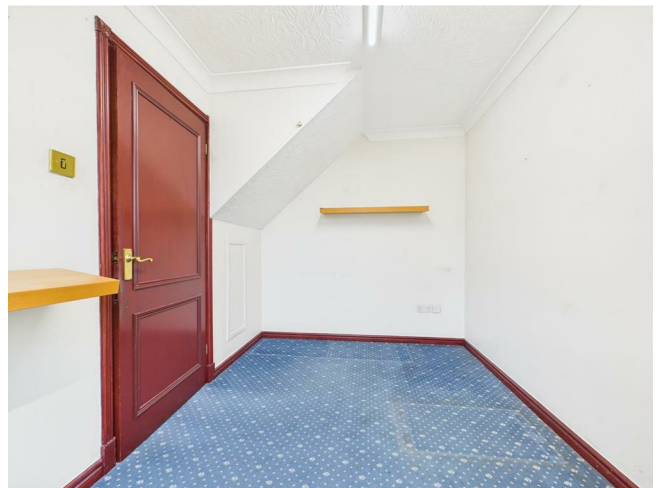
- NO ONWARD CHAIN
- SOUGHT AFTER VILLAGE LOCATION
- FOUR BEDROOM DETACHED FAMILY HOME
- SPACIOUS LOUNGE WITH LOTS OF NATURAL LIGHT
- DINING ROOM
- STUDY/RECEPTION ROOM
- PLENTY OF STORAGE
- PRIVATE REAR GARDEN SAT ON A LARGE CORNER PLOT
- AMPLE PARKING & DRIVEWAY & DOUBLE GARAGE
- VIEWINGS 7 DAYS A WEEK

## Description

**\*\*OOZING POTENTIAL- IN NEED OF MODERNISATION, THIS WELL LOCATED 4 BEDROOM DETACHED FAMILY HOME SITS ON A SUBSTANTIAL PLOT IN A QUIET, CUL DE SAC LOCATION IN HARVINGTON\*\***

Internally boasting spacious lounge with large patio doors onto secluded garden and double doors through to adjoining dining room. Kitchen, study, family bathroom and 4 bedrooms including master bedroom en-suite.

- Wychavon CC
- Tax Band - F
- EPC - D



### Front

This imposing corner property, stands within a plot that sweeps around the house to the right, with double garage space and off-street parking for 2 cars to the left.

### Hallway

Carpeted flooring, radiator and doors leading to the living room, study, kitchen, main front door and downstairs wc. Wooden stairs to 4 bedrooms.

### Kitchen

Everyday access is through a side door into the kitchen with vinyl flooring and a mix of wall and base units surmounted by a work surface and featuring integrated double oven, gas hob and extractor. A window provides front aspect over the front garden and close.

### Dining Room

Window overlooking rear garden, carpeted, radiator and useful hatch to kitchen.

### Living Room

Light and spacious room, with patio sliding doors leading to a mature garden at the rear and sides of the property. Feature fireplace, carpeted, radiator and double doors opening up to the Dining Room space.

### Study/Reception

Window facing the front garden and Close, with radiator and carpeted.







#### WC

Vinyl flooring, toilet, sink and window to front of property.

#### Landing

Landing with window to right side of house, with airing cupboard and boiler, leading to 4 bedrooms:

#### Bedroom 1

With window over front garden, radiator, carpeted flooring.

#### Bedroom 2

With window over rear garden, radiator, fitted wardrobe, carpeted.

#### Bedroom 3

Master bedroom, window over rear garden, fitted wardrobe, radiator, carpeted, with en-suite bathroom featuring integrated sink, wall units and mirror

#### Bedroom 4

With windows over front garden and side driveway, radiator, carpeted.

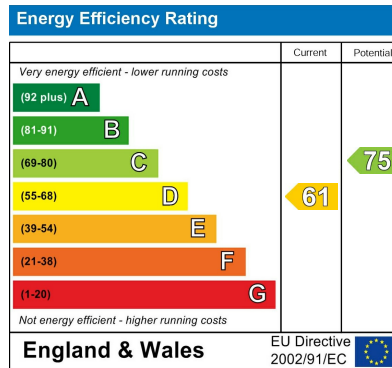
#### Family Bathroom

Bath, toilet, hand basin, radiator, carpeted, with window to front of property.

#### Rear Garden

Offering a secluded space of south-west facing garden, sweeping around to the right of the house, and area to the left featuring a small pond.

# Floor plans



1 Port Street  
Evesham  
Worcestershire  
WR11 3LA  
01386 574 000

sales@cooperandcoestateagents.co.uk