



2 Bed Bungalow - Detached

4 Eaton Court, Duffield, Belper DE56 4FT
Offers Around £425,000 Freehold



2



1



2



D

Fletcher
& Company

www.fletcherandcompany.co.uk

- Highly Appealing Detached Bungalow
- Cul-de-Sac Location
- Close To Duffield Village Amenities – Shops, Bus Services, Pubs, Doctors, Library
- Gas Central Heating & Double Glazing
- Lounge/Dining Room
- Kitchen/Diner
- Two Bedrooms
- En-Suite & Shower Room
- Private Garden
- Driveway & Double Garage

A two bedroom en-suite detached bungalow with double garage within walking distance of Duffield amenities.

The Location

The village of Duffield provides an excellent range of amenities including a varied selection of shops, post office, library, historic St Alkmund's Church and a selection of good restaurants, medical facilities and schools including The Meadows, William Gilbert Primary Schools and the noted Ecclesbourne Secondary School. There is a regular train service into Derby City centre which lies some 5 miles to the south of the village. Local recreational facilities within the village include squash, tennis, cricket, football, rugby and the noted Chevin Golf course. A further point to note is that the Derwent Valley, in which the village of Duffield nestles, is one of the few world heritage sites and is surrounded by beautiful countryside.

Accommodation

Storm Porch

With quarry tiled flooring, outside light and double glazed door opening into entrance hall.

Entrance Hall

19'3" x 3'4" (5.89 x 1.02)

With radiator, burglar alarm control panel, coving to ceiling, access through space, built-in storage cupboard and built-in airing cupboard housing the hot water cylinder.

Lounge/Dining Room

24'6" x 11'7" (7.49 x 3.54)



Lounge Area

With fireplace, coving to ceiling, radiator, double glazed bow window with deep window sill and aspect to front with fitted blind, open space leading to dining area and internal panelled door.



Dining Area

With radiator, coving to ceiling and double glazed sliding patio doors opening onto patio and rear garden.



Kitchen/Diner

Kitchen Area

9'10" x 9'4" (3.00 x 2.86)

With single sink with chrome mixer tap, wall and base fitted units with matching worktops, built-in four ring gas hob, built-in double electric fan assistant oven, plumbing for automatic washing machine, integrated dishwasher, radiator, coving to ceiling, tiled effect flooring, double glazed window to rear, open archway leading into dining area and double glazed door giving access to the garden.



Dining Area

8'2" x 7'11" (2.50 x 2.42)

With fitted Welsh dresser with glazed cabinets, matching tile flooring, coving to ceiling, radiator, wall mounted Worcester boiler, open archway leading to kitchen area and double glazed window overlooking rear garden.



Double Bedroom One

14'0" x 10'4" (4.29 x 3.17)

With fitted wardrobes with matching fitted dressing table and base cupboards, radiator, coving to ceiling, double glazed window with fitted blind and internal panelled door.



En-Suite

6'7" x 6'2" (2.03 x 1.88)

With separate shower cubicle with shower, pedestal wash handbasin, low level WC, fully tiled walls, radiator, wall mounted mirror medicine cabinet, shaver point, coving to ceiling, double glazed obscure window and internal panelled door.



Double Bedroom Two

9'11" x 9'9" (3.04 x 2.98)

With radiator, coving to ceiling, double glazed window with fitted blind overlooking rear garden and internal panelled door.



Bathroom/Shower Room

6'11" x 6'0" (2.12 x 1.85)

With chrome shower, fitted wash basin with chrome fittings and fitted base cupboard underneath, Vitra V-Care toilet with wash and dry facility, wall mounted mirror medicine cabinet, fully tiled walls, tile flooring, spotlights to ceiling, heater towel rail/radiator, extractor fan, double glazed obscure window fitted blind and internal panelled door.



Roof Space

Accessed via an aluminium loft ladder, boards for storage, insulation and light.

Private Garden

To the rear of the property is a pleasant, enclosed, manageable garden laid to lawn with a varied selection of shrubs, plants and sun patio.



Driveway

A tarmac driveway provides car standing spaces for three vehicles.



Brick Double Garage

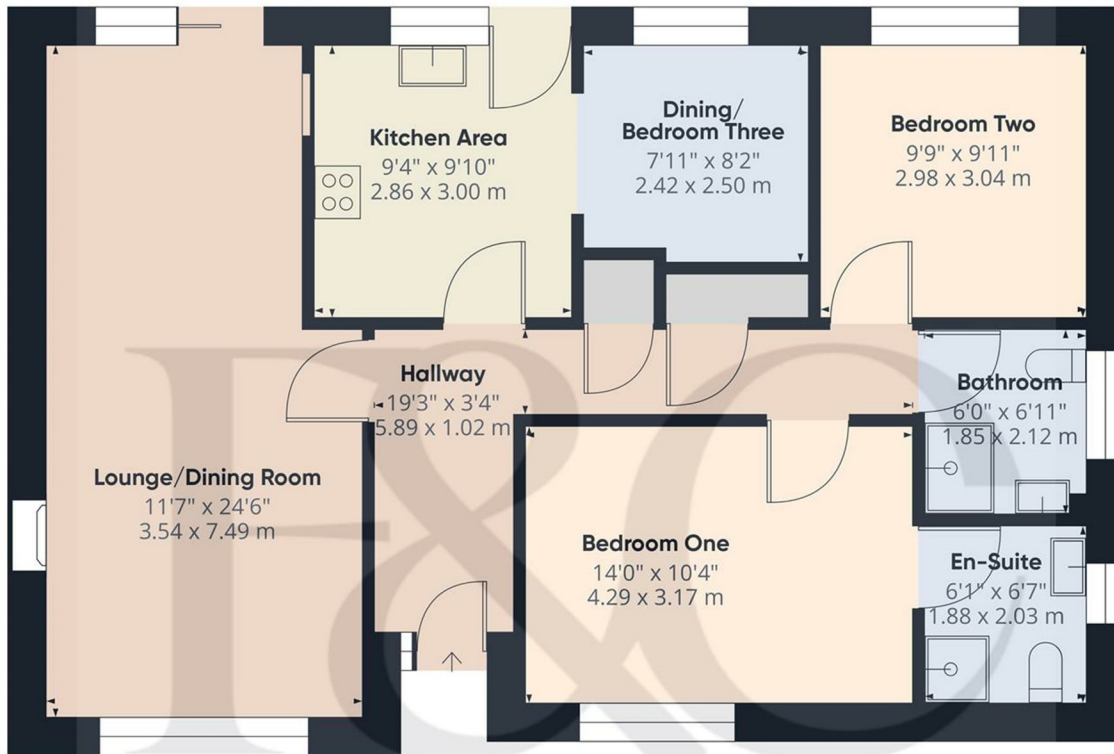
17'6" x 17'0" (5.35 x 5.20)

With concrete floor, power and lighting, side personnel door and two up and over metal front doors.



Council Tax Band - F

Amber Valley



Approximate total area^m
878 ft²
81.6 m²

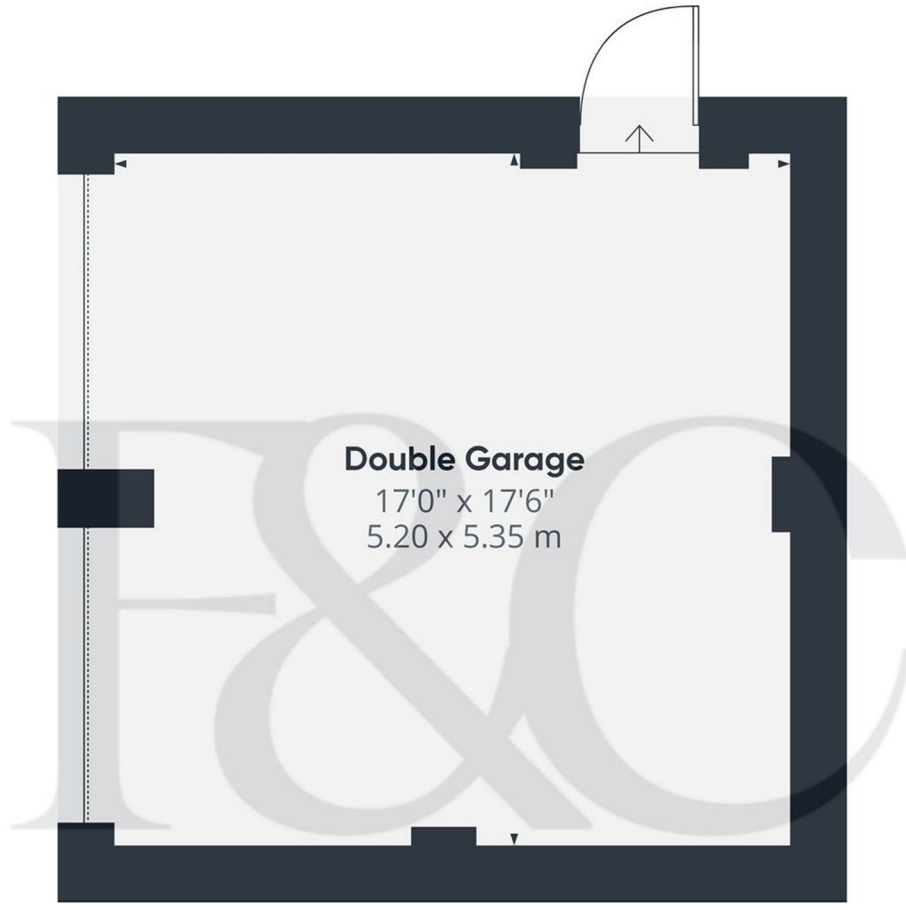
(1) Excluding balconies and terraces

Calculations reference the RICS IPMS 3C standard. Measurements are approximate and not to scale. This floor plan is intended for illustration only.

GIRAFFE360

Floor 0 Building 1

These particulars do not constitute an offer or a contract neither do they form part of an offer or contract. The vendor does not make or give and Messrs. Fletcher & Company nor any person employed has any authority to make or give any representation or warranty, written or oral, in relation to this property. Whilst we endeavour to make our sales details accurate and reliable, if there is any point which is of particular importance to you, please contact the office and we will be pleased to check the information for you, particularly if contemplating travelling some distance to view the property. None of the services or appliances to the property have been tested and any prospective purchasers should satisfy themselves as to their adequacy prior to committing themselves to purchase.



Double Garage
 17'0" x 17'6"
 5.20 x 5.35 m

Approximate total area⁽¹⁾
 304.08 ft²
 28.25 m²

(1) Excluding balconies and terraces

While every attempt has been made to ensure accuracy, all measurements are approximate, not to scale. This floor plan is for illustrative purposes only.
 Calculations are based on RICS IPMS 3C standard.

GIRAFFE360

Floor 0 Building 2

Energy Efficiency Rating

	Current	Potential
<i>Very energy efficient - lower running costs</i>		
(92 plus) A		
(81-91) B		
(69-80) C		
(55-68) D		
(39-54) E		
(21-38) F		
(1-20) G		
<i>Not energy efficient - higher running costs</i>		
	67	83
England & Wales	EU Directive 2002/91/EC	

Environmental Impact (CO₂) Rating

	Current	Potential
<i>Very environmentally friendly - lower CO₂ emissions</i>		
(92 plus) A		
(81-91) B		
(69-80) C		
(55-68) D		
(39-54) E		
(21-38) F		
(1-20) G		
<i>Not environmentally friendly - higher CO₂ emissions</i>		
England & Wales	EU Directive 2002/91/EC	

These particulars do not constitute an offer or a contract neither do they form part of an offer or contract. The vendor does not make or give and Messrs. Fletcher & Company nor any person employed has any authority to make or give any representation or warranty, written or oral, in relation to this property. Whilst we endeavour to make our sales details accurate and reliable, if there is any point which is of particular importance to you, please contact the office and we will be pleased to check the information for you, particularly if contemplating travelling some distance to view the property. None of the services or appliances to the property have been tested and any prospective purchasers should satisfy themselves as to their adequacy prior to committing themselves to purchase.