



## WESTBROOK HOUSE 58-60 SHORNCLIFFE ROAD FOLKESTONE, CT20 2NQ

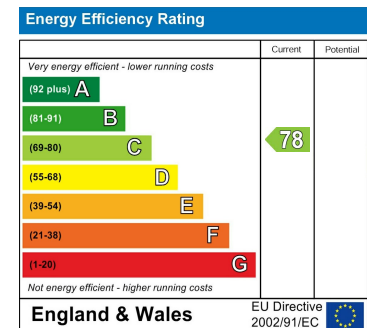
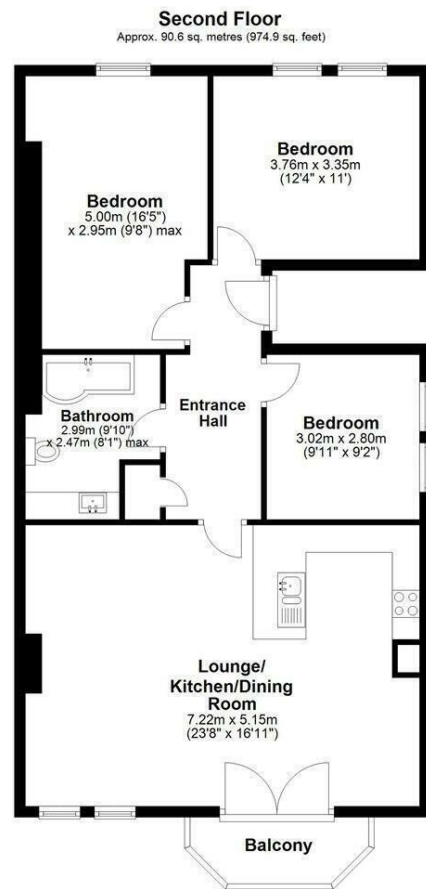
**£1,450 PER MONTH**

West End Estates are delighted to offer this stylish three-bedroom apartment on Shorncliffe Road offers a perfect blend of comfort and convenience. The property boasts a generous living space of 974 square feet, making it an ideal home for families or professionals seeking a stylish retreat.

Upon entering, you are welcomed into a bright and airy reception room, perfect for relaxation or entertaining guests. The apartment features three well-proportioned bedrooms, providing ample space for rest and privacy. The contemporary bathroom is designed with victorian-style fixtures and tiles.

One of the standout features of this property is its prime location. Just a short stroll from Folkestone West train station, residents can enjoy the benefits of a high-speed service to London, making commuting a breeze. Additionally, the flat comes with an allocated parking space, a valuable asset in this bustling area.

**WEST END  
ESTATES**  
LETTINGS AND PROPERTY MANAGEMENT



**EPC Rating: C    Council Tax Band: C**

Agents Note: Whilst every care has been taken to prepare these particulars, they are for guidance purposes only. All measurements are approximate and are for general guidance purposes only and whilst every care has been taken to ensure their accuracy, they should not be relied upon and potential buyers/tenants are advised to recheck the measurements

West End Estates Folkestone  
7 Sapper Row  
Folkestone  
Kent  
CT20 3WT

01303 478777  
office@westend-estates.co.uk

**WEST END  
ESTATES**  
LETTINGS AND PROPERTY MANAGEMENT