



Shuttlewood Road, Bolsover CHESTERFIELD S44 6PB

welcome to

Shuttlewood Road, Bolsover CHESTERFIELD

A charming detached dormer bungalow in the sought after location of Bolsover. Featuring a welcoming entrance porch, two reception rooms, kitchen/diner, bedroom and bathroom to the ground floor, with two further bedrooms above. With parking, garage and mature garden.

Porch

Double glazed French doors open into a spacious entrance porch/garden room. This area could be utilised as a reception space to enjoy the garden year round or simply provides ample space to wipe down muddy paws after a countryside walk. With radiator, dual aspect double glazed windows, laminate flooring and sliding double glazed door to:

Kitchen/Diner

The open concept kitchen/diner is the perfect hub for daily family life or as a space for entertaining. The dining area benefits from fitted carpet, radiator and a feature fireplace, door to the lounge and has open sight lines to the kitchen beyond. The kitchen is fitted with a range of wall, base and drawer units with traditional shaker-style cabinet doors and complimentary worktops over. The kitchen features an eye-level electric oven with integral microwave above, halogen hob and extractor hood, together with under-counter fridge and freezer.. Space is provided for a washing machine. An inset sink and drainer unit sits beneath one of three double glazed windows bringing ample natural light into the space. With laminate flooring.

Living Room

A comfortable sitting room decorated in neutral tones. With fitted carpet, two radiators and dual aspect double glazed windows.

Lounge

A second comfortable reception space which could be utilised as a second sitting room, formal dining room or playroom as required. With fitted carpet, radiator and double glazed window to the front elevation.

Bedroom One

A comfortable double bedroom benefitting from a suite of fitted wardrobes and matching dressing table. With fitted carpet, radiator and double glazed window to the front elevation.

Bathroom

The property benefits from a modern family bathroom. The space is fitted with a soaker tub with mains powered shower above and fitted glass shower screen, together with a vanity hand-wash basin and low level WC. The bathroom is fully tiled and features underfloor heating and frosted double glazed window to the side.

First Floor Landing

Carpeted stairs ascend to a generous landing area with fitted storage cupboard. This generous space could be utilised as a home office if required. With doors to:

Bedroom Two

A second comfortable double bedroom also benefitting from a suite of fitted wardrobes and additional built-in storage cupboard. With fitted carpet, radiator and double glazed window to the rear.

Bedroom Three

A third generous double bedroom with fitted carpet, radiator and double glazed window to the front elevation.

Garage

Detached garage with manual up and over door, double glazed window to the side elevation and personnel door to the side.





Outside

The property sits back from the road at the head of a generous block paved driveway offering off-street parking for several vehicles. The front garden is laid predominantly to lawn with borders for planting, adding to the property's curb appeal. To the rear, the property offers a large patio area, perfect for summer entertaining and family BBQ's. Beyond the patio lies a large established lawn with borders for planting, flanked with mature shrubs and trees. This property is the perfect choice for green fingered enthusiasts.



view this property online williamhbrown.co.uk/Property/CSF104018



welcome to

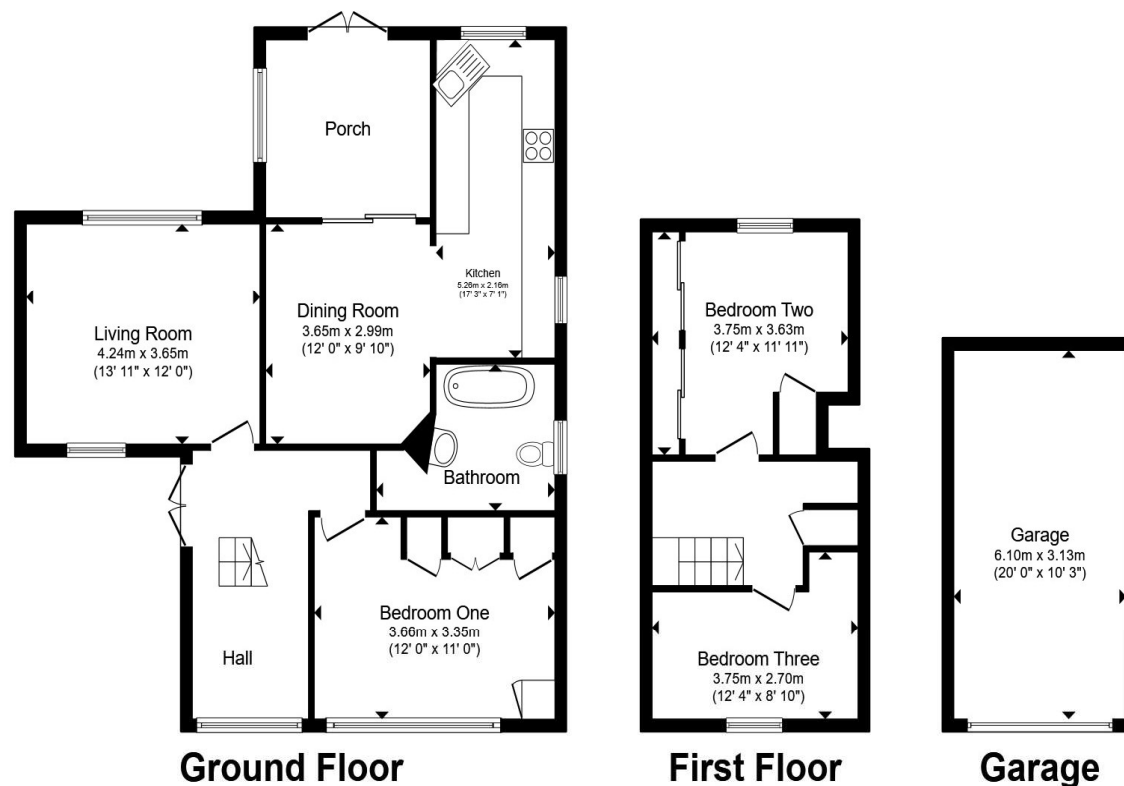
Shuttlewood Road, Bolsover CHESTERFIELD

- Council Tax Band D
- Three Double Bedrooms
- Impressive Plot
- Ample Parking
- Detached Garage

Tenure: Freehold EPC Rating: D
Council Tax Band: D

guide price

£340,000



Total floor area 128.8 m² (1,386 sq.ft.) approx

This floor plan is for illustrative purposes only. It is not drawn to scale. Any measurements, floor areas (including any total floor area), openings and orientation are approximate. No details are guaranteed, they cannot be relied upon for any purpose and they do not form part of any agreement. No liability is taken for any error, omission or misstatement. A party must rely upon its own inspection(s). Powered by www.propertybox.io



view this property online williamhbrown.co.uk/Property/CSF104018



Property Ref:
CSF104018 - 0006

1. MONEY LAUNDERING REGULATIONS Intending purchasers will be asked to produce identification documentation at a later stage and we would ask for your co-operation in order that there is no delay in agreeing the sale. 2. These particulars do not constitute part or all of an offer or contract. 3. The measurements indicated are supplied for guidance only and as such must be considered incorrect. Potential buyers are advised to recheck measurements before committing to any expense. 4. We have not tested any apparatus, equipment, fixtures or services and it is in the buyers interest to check the working condition of any appliances. 5. Where an EPC, or a Home Report (Scotland only) is held for this property, it is available for inspection at the branch by appointment. If you require a printed version of a Home Report, you will need to pay a reasonable production charge reflecting printing and other costs. 6. We are not able to offer an opinion either written or verbal on the content of these reports and this must be obtained from your legal representative. 7. Whilst we take care in preparing these reports, a buyer should ensure that his/her legal representative confirms as soon as possible all matters relating to title including the extent and boundaries of the property and other important matters before exchange of contracts.

William H Brown is a trading name of Sequence (UK) Limited which is registered in England and Wales under company number 4268443. Registered Office is Cumbria House, 16-20 Hockliffe Street, Leighton Buzzard, Bedfordshire, LU7 1GN. VAT Registration Number is 500 2481 05.

 william h brown



01246 204492



chesterfield@williamhbrown.co.uk



6 Glumangate, CHESTERFIELD, Derbyshire, S40 1TP



williamhbrown.co.uk