



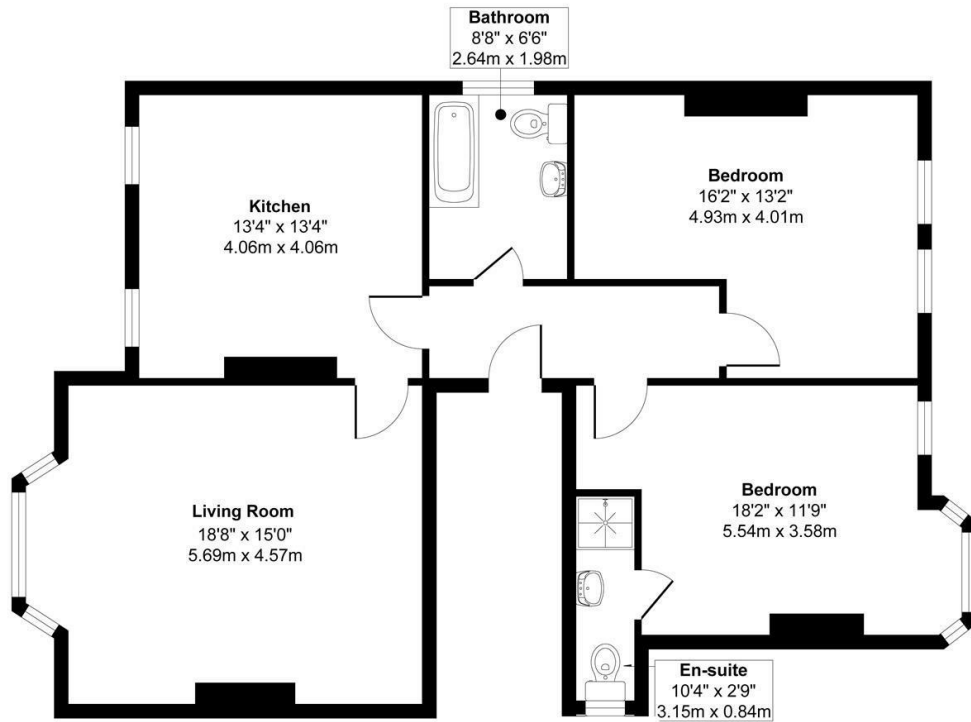
St. Matthews Road, St. Leonards-On-Sea TN38 0TN
Offers in excess of £275,000

 2
  1
  2
  C

Exquisite TWO BEDROOM, TWO BATHROOM, first floor APARTMENT with OFF ROAD PARKING, forming part of this beautiful Victorian building. It's situated in a sought after, LEAFY ST. LEONARDS SETTING within walking distance to local shops and close proximity of the hub of St. Leonards On Sea where there are a range of independent shops, award winning eateries, the seafront and two mainline railway stations with connections to London. Located close to St. Matthews Private Residential Gardens, for which residents of the surrounding properties are eligible to apply for membership, providing access to a beautifully maintained private green space. This home has been thoughtfully renovated, delighting in a WEALTH OF CHARACTER FEATURES including decorative corning, original fireplaces and high ceilings. The generous accommodation spans the WHOLE FIRST FLOOR of this attractive BAY FRONTED RESIDENCE. Enjoying a welcoming hallway leading to a SPACIOUS LIVING ROOM which measures 18'8 x 15'0, relishing a bay window and an ORIGINAL FIREPLACE with marble surround. The contemporary fitted KITCHEN

St Mathew's Rd

Approximate Gross Internal Floor Area
973 sq. ft / 90.39 sq. m



Property Page 1 of 10

