



City Road, London EC1V

Guide price £535,000 Leasehold





Description

Extending to an impressive 547 sq ft of well-proportioned living space, and set on the 15th floor, the apartment offers exhilarating views across the City from all principal rooms.

A dual aspect open plan style reception room offers 180 degree views from floor to ceiling windows and opens to its private balcony. A large bedroom suite offers extensive views and features a range of built-in wardrobes, whilst a family bathroom and separate storage cupboards are found off a welcoming hallway.

The Atlas Building is next to Old Street station (0.1 mile) and ideally situated for the City, Hoxton, Shoreditch and Angel. The development offers fantastic amenities which include pool, spa, gymnasium, private cinema room, resident's only business lounge and 24 hour concierge.

Leasehold 988 years (exp. 31/12/3013)
Ground Rent: Approx. £500 pa
Service Charge: Approx. £7,270 pa
Council Tax Band: E
EPC Rating: B



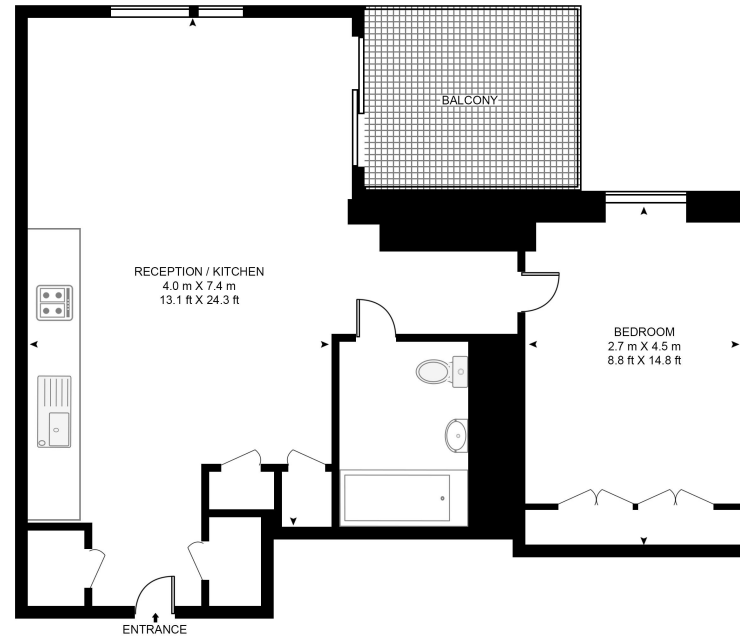
- 1 Bedroom apartment
- 1 Bathroom
- Private balcony with 15th floor views
- Far reaching roof top views
- Luxury building

24hr Concierge
Residents facilities inc pool, gym & private cinema
Ideally located
Approx. 547 sq ft / 50.8 sq m

Floorplan

547 sq ft | 51 sq m

ATLAS BUILDING, 145 CITY ROAD
APPROXIMATE GROSS INTERNAL FLOOR AREA 547 SQ.FT (50.8 SQ.M)



FIFTEENTH FLOOR

HDVA

This floor plan has been defined by the RICS Code of Measurement. This floor plan and all others are for approximate representative purposes only and upon usage is agreed to as such by the client.
WWW: hdvirtualart.com | TEL: 0203.974.1567 | EMAIL: info@hdvirtualart.com

City
25 Walbrook The Walbrook
Building,
London EC4N 8AF
+4420 7337 4000

Urban living, your way.

jll.co.uk/residential

© 2019 Jones Lang LaSalle IP, Inc. All rights reserved. All information contained herein is from sources deemed reliable; however, no representation or warranty is made to the accuracy thereof.

