

## 565 Wolverhampton Road, Oldbury

£180,000 Freehold

Hadleigh Estate Agents are delighted to offer this fantastic two bedroom end terrace property for sale. Offered with NO UPWARD CHAIN the property makes for a fantastic investment or first time buy. Located on Wolverhampton Road with street parking to the rear.

The property is conveniently located for local amenities, excellent transport and motorway networks, along with nearby schools. The property offers kitchen diner, lounge and guest WC, with the first floor boasting two double bedrooms, bathroom and separate WC. To the rear of the property is a private garden.





### **Entrance Hallway**

Door to front and wall mounted radiator.

### **Lounge**

Double glazed patio door to the rear and wall mounted radiator.

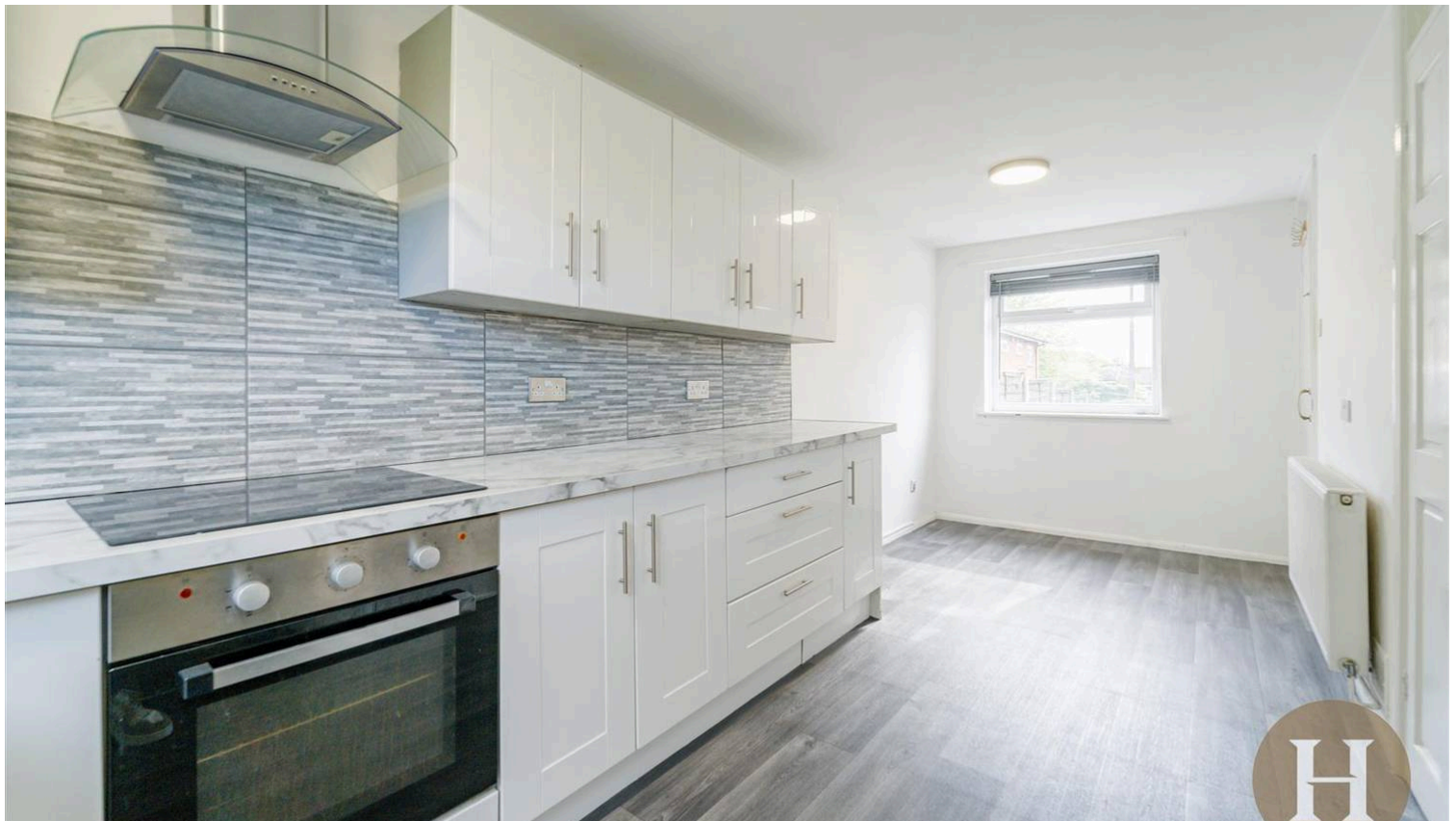
### **Kitchen Diner**

Wall and base units, sink/drainer integrated into work surface, double glazed window to rear and to the front. Integrated electric oven & hob. Pantry area providing additional storage.



### **Guest WC**

Low level flush WC, ceiling light point and housing meter.





#### **Rear Hall**

Giving access to the garden, opaque glazed patio door and additional storage area.

#### **Master Bedroom**

Double glazed window to rear and wall mounted radiator.

#### **Bedroom Two**

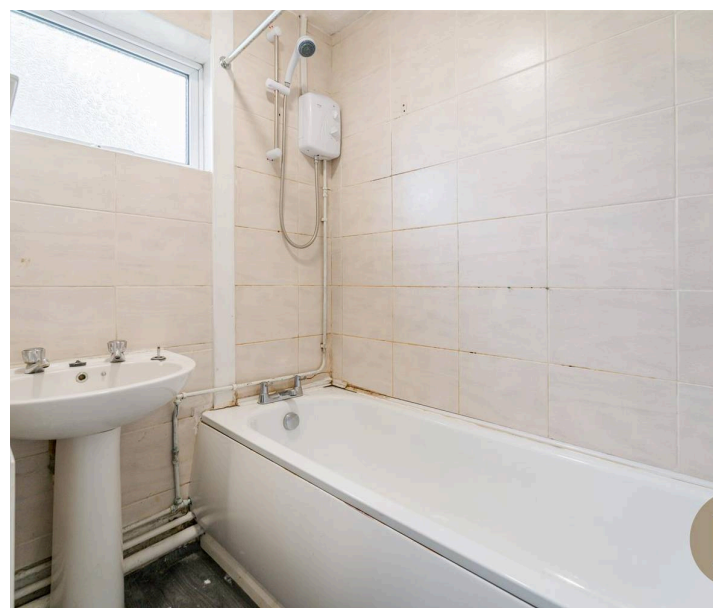
Double glazed window to rear and wall mounted radiator.

#### **Bathroom**

Bath with shower over, wash hand basin, wall mounted radiator & separate WC.

#### **Garden**

Lawn area with fence boundaries and gate to the rear providing additional access.

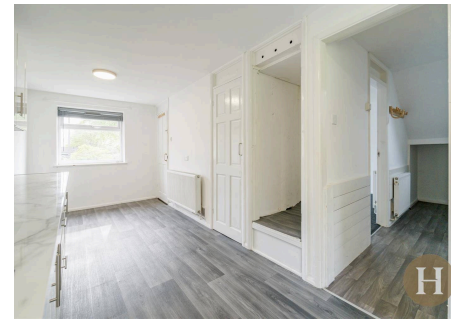


Council Tax band: B

Tenure: Freehold

EPC Energy Efficiency Rating: C

EPC Environmental Impact Rating: D



- Two bedroom end-terrace on Wolverhampton Road
- No upward chain
- Ideal first time buy or investment
- Lounge & kitchen/diner with guest WC
- Two double bedrooms, bathroom & separate WC



Approx Gross Internal Area  
74 sq m / 798 sq ft



Ground Floor  
Approx 37 sq m / 397 sq ft

First Floor  
Approx 37 sq m / 400 sq ft

This floorplan is only for illustrative purposes and is not to scale. Measurements of rooms, doors, windows, and any items are approximate and no responsibility is taken for any error, omission or mis-statement. Icons of items such as bathroom suites are representations only and may not look like the real items. Made with Made Snappy 360.