



Flat 20, 39 Bramham Gardens, London | Earls Court | London | SW5 0JL

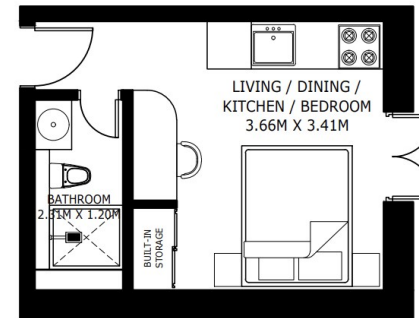
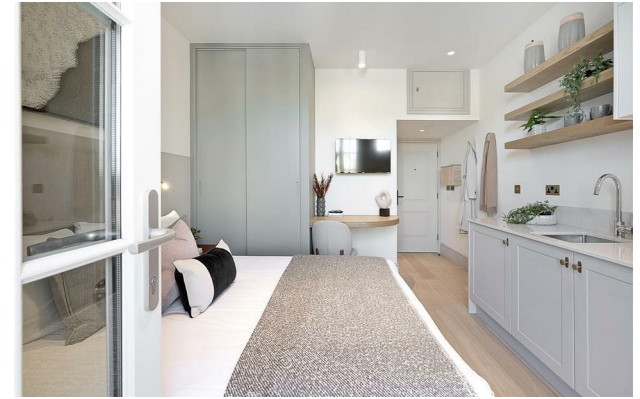
£1,950 Per Month

SÉJOUR

Flat 20, 39 Bramham Gardens,
London | Earls Court
London | SW5 0JE

Welcome to Bramham Gardens, an exceptional newly refurbished development crafted by award-winning interior designers. This beautifully finished, fully furnished studio apartment offers the perfect fusion of contemporary design, comfort, and practicality.

- Beautifully refurbished apartment
- Stunning private terrace
- Plenty of natural light
- Third, top-floor position
- Bright open-plan studio
- Available early July



Energy Efficiency Rating		Current	Potential
<i>Very energy efficient - lower running costs</i>			
(92 plus)	A		
(81-91)	B		
(69-80)	C	79	85
(55-68)	D		
(39-54)	E		
(21-38)	F		
(1-20)	G		
<i>Not energy efficient - higher running costs</i>			
England & Wales		EU Directive 2002/91/EC	

Council Tax Band B
EPC Rating C

UNIT 20

GROSS INTERNAL AREA
26.30 SQ.M. / 283.09 SQ.FT.

*SIZES AND DIMENSIONS ARE APPROXIMATE, ACTUAL MAY VARY.

10 Cromwell Pl
South Kensington
London
SW7 2JN

020 3865 0611
lettings@cityrelay.com