



Avondale Road, CR2

£1,500 Per calendar month

Well-presented two bedroom first floor Victorian conversion flat located in South Croydon. The property offers a spacious lounge, nicely fitted kitchen and bathroom. Further benefits include gas central heating and good-sized bedrooms. Ideal for a professional couple or two sharers. Offered unfurnished. Conveniently located close to local amenities and transport links.

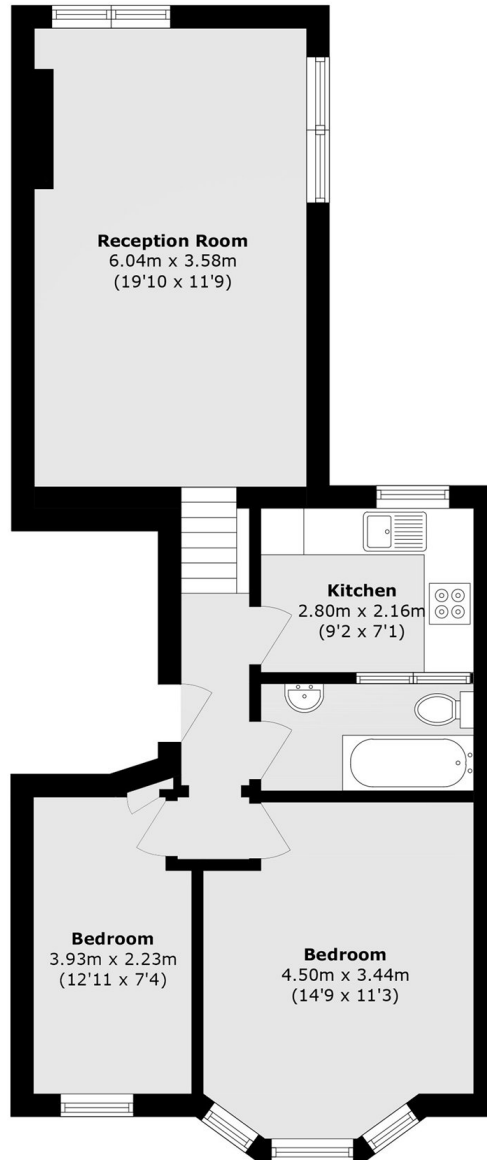
Situated in a popular residential area of South Croydon, the property is conveniently located close to a range of local shops, cafés and everyday amenities. South Croydon and Purley Oaks stations are within easy reach, offering regular rail services into Central London, making the property ideal for commuters. The area also benefits from nearby parks, green spaces and good local schools.

Features

Two Bedroom First Floor Flat

Nicely Fitted Kitchen
Spacious Reception Room
Unfurnished

Avondale Road,
South Croydon, CR2



Total area (approx.): 61.2 sq. m (658.7 sq. ft)