

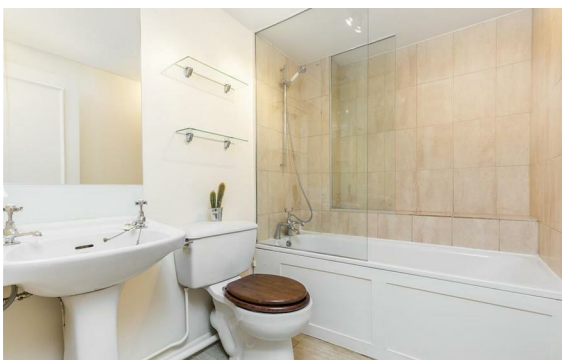


[Fitzroy Mews, Fitzrovia, London, W1T](#)

Rent £695 PCM

2 Bed | 1 Bath | 1 Reception

*Please call us on 020 7724 2233 or email us [info@newingtonstates.com](mailto:info@newingtonstates.com) to book a viewing.*



A well-presented two-bedroom apartment offering comfortable living space and a practical layout in a vibrant central London location. The property features a spacious reception room, a separate fully fitted kitchen, and two well-proportioned bedrooms. Wooden flooring and large windows enhance the natural light throughout, while a private balcony adds valuable outdoor space. The layout is ideal for professionals or a couple.

Ideally located in Fitzrovia / Bloomsbury, with excellent transport links via Tottenham Court Road Station and Goadge Street Station. The amenities of Oxford Street and nearby University College London are within easy reach, along with Regent's Park and Russell Square.

EPC Rating: D

## Energy Efficiency Rating: D

Agents Note: Whilst every care has been taken to prepare these particulars, they are for guidance purposes only. All measurements are approximate and are for general guidance purposes only and whilst every care has been taken to ensure their accuracy, they should not be relied upon and potential buyers/tenants are advised to recheck the measurements.

**NEWINGTON**  
— ESTATES —

60 Upper Montagu Street

London

W1H 1SN

020 7724 2233

[info@newingtonstates.com](mailto:info@newingtonstates.com)

<http://www.newingtonstates.com>