



30 The Meadows, Kirk Michael, Isle Of Man, IM6 2EY
Asking Price £419,950

- The open-plan living and dining space creates a warm and inviting hub of the home, complete with a log burner for cosy evenings all year round.
- Ample driveway parking for multiple vehicles, alongside a garage and utility space, ensures everyday practicality matches the comfort of this well-designed home.
- The home features three well-proportioned bedrooms, including two with built-in wardrobes, providing comfortable and practical living space for families or guests.
- Enjoy effortless indoor–outdoor living with two sets of sliding doors opening onto separate decked seating areas, perfect for entertaining or relaxing in the sun throughout the day.
- A versatile summerhouse at the end of the garden provides the ideal escape, whether used as a creative studio, hobby room, or quiet retreat.



Tucked away in a quiet and private position, this well-presented detached three-bedroom bungalow occupies a generous corner plot, offering both space and versatility inside and out.

The property is impeccably maintained and thoughtfully laid out, beginning with a spacious entrance hall that sets the tone for the rest of the home. There are three well-proportioned bedrooms, two of which benefit from built-in wardrobes, while the family bathroom is fitted with both a bath and a separate shower, providing practicality without compromise.

At the heart of the home is a modern kitchen, complemented by a separate utility room with internal access to the garage, adding everyday convenience. The bright and inviting open-plan living and dining area is a standout feature, complete with a log burner and two sliding doors that seamlessly connect the indoor space to the garden.

Externally, the property truly shines. The large corner plot provides a garage along with a substantial parking area accommodating up to five vehicles. The garden has been thoughtfully designed into two distinct areas: one directly off the dining space, featuring a decked seating area perfect for entertaining, and another accessed from the living area, offering further decking, a beautifully maintained lawn, and a sunny aspect throughout the day.

At the foot of the garden sits a charming summerhouse, offering excellent flexibility as a studio, snug, or a peaceful retreat for relaxation.

An excellent opportunity to acquire a generously proportioned, move-in-ready home set in a private position, offering superb outdoor space and highly flexible living accommodation.









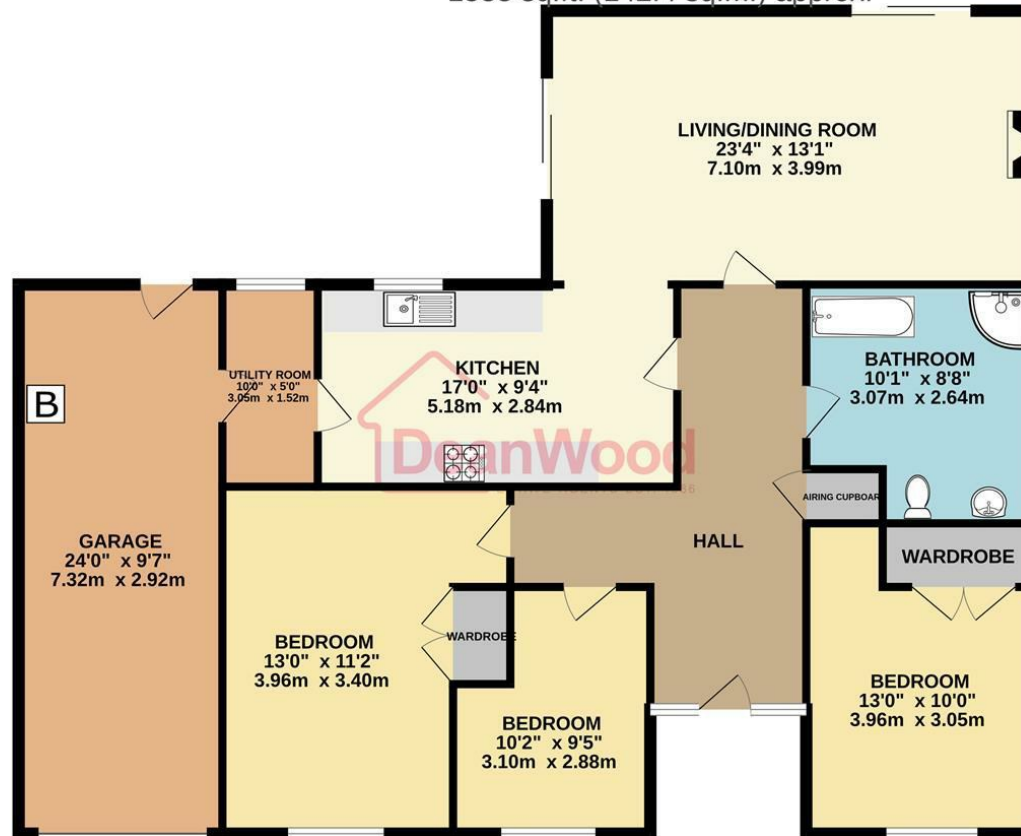




30 The Meadows, Kirk Michael, Isle Of Man, IM6 2EY



GROUND FLOOR
1533 sq.ft. (142.4 sq.m.) approx.



TOTAL FLOOR AREA : 1533 sq.ft. (142.4 sq.m.) approx.
Not to scale-for identification purposes only
Made with Metropix ©2026



DOUGLAS

37 VICTORIA STREET
DOUGLAS
ISLE OF MAN IM1 2LF

T 01624 620606
F 01624 677363
E info@deanwood.co.im

CASTLETOWN

COMPTON HOUSE
9 CASTLE STREET CASTLETOWN
ISLE OF MAN IM9 1LF

T 01624 825995
F 01624 825996
E castletown@deanwood.co.im

RAMSEY

LEZAYRE HOUSE
87 PARLIAMENT STREET
RAMSEY ISLE OF MAN IM8 1AQ

T 01624 816111
F 01624 816588
E ramsey@deanwood.co.im

These particulars are for information purposes only. They do not constitute or form any contract nor should any statement contained herein be relied upon as a representation of fact. Neither the vendor nor DeanWood Agencies Limited ('the firm'), nor any officer or employee of the firm accept liability or responsibility for any statement contained herein. The vendor does not by these particulars, nor does the firm, nor does any officer or any employee of the firm have any authority to make or give any representation or warranty whatsoever as regards the property or otherwise. It is the sole responsibility of any person interested in the property described in these particulars to make all proper enquiries and searches to verify the description of the property and all other particulars herein.

FOR MORE PROPERTIES VISIT OUR WEBSITE @ deanwood.im