



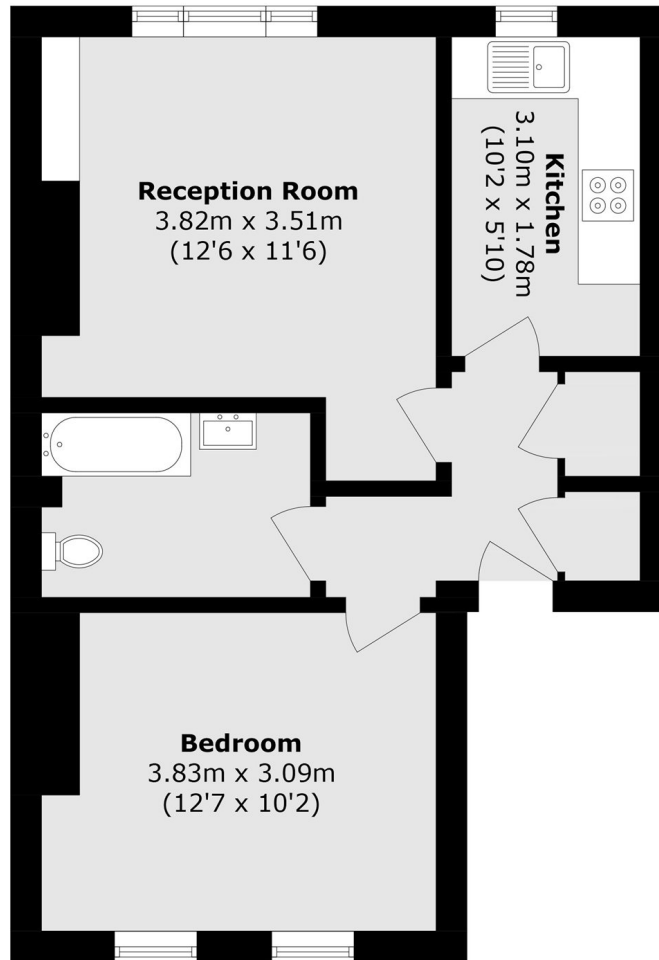
## Beatrice Avenue, SW16

£250,000

A well-presented one bedroom first floor period conversion, located just 0.6 miles from Norbury Station. The property benefits from access to a large communal garden and long leasehold. Energy rating: C.

The nearest mainline station, Norbury, is only 0.6 Miles away, offering regular rail services to London Bridge and London Victoria. The area is well served by highly regarded schools, with Norbury Park and Streatham Common also nearby, providing excellent recreational facilities.

Period Conversion, One Bedroom, First Floor, 0.6 Miles To Station, Long Leasehold, EPC C



Total area (approx.): 43.6 sq. m (469.3 sq. ft)

James Alexander  
1341 London Road,  
Norbury, SW16 4BE  
020 8629 8028  
norburysales@dexters.co.uk

Energy Rating: C We aim to make our particulars both accurate and reliable. However they are not guaranteed; nor do they form part of an offer or contract. If you require clarification on any points then please contact us, especially if you're travelling some distance to view. Please note that appliances and heating systems have not been tested and therefore no warranties can be given as to their good working order.