

Cilfach, Walwen Lane, Axton, Flintshire, CH8 9DL

£780,000



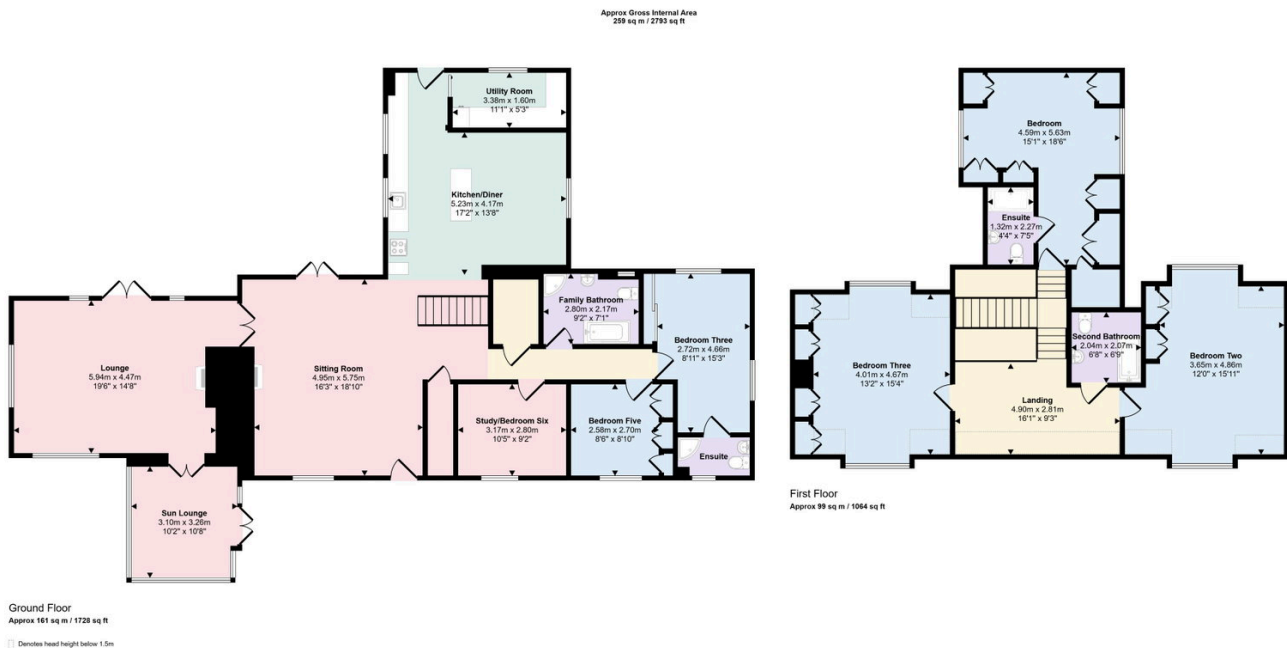
This former blacksmiths cottage dates back to around 1841 and has been sympathetically extended by the current owners to provide a family home of character and charm with exposed stone walls, a feature exposed 'A' framed ceiling and log burners whilst offering modern refinements with a kitchen/diner, utility room, six bedrooms two of which enjoy an ensuite facility and two bathrooms. Benefiting from oil fired heating, solar panels and an EV charging point with a substantial driveway and turning point with the additional benefit of a single and double Garage. The grounds are a particular feature of this property, standing in approximately 1.4 acres divided into formal gardens with sun terrace and Orchard with a natural woodland area and paddock ideal for a pony.

PETER LARGE

ESTATE AGENTS

Key Features

- A FAMILY HOME OF CHARM & CHARACTER
- SUBSTANTIAL LIVING ACCOMMODATION
- SIX GOOD SIZE BEDROOMS
- TWO BATHROOMS & TWO ENSUITE FACILITIES
- EXTENSIVE LANDSCAPED GARDENS
- PONY Paddock
- DOUBLE & SINGLE GARAGE WITH DRIVEWAY
- OIL FIRED HEATING & SOLAR PANELS
- FREEHOLD
- COUNCIL TAX - G EPC - C



CONSUMER PROTECTION REGULATIONS 2008 AND THE BUSINESS PROTECTION FROM MISLEADING MARKETING REGULATIONS 2008

These particulars, whilst believed to be accurate, are set out for guidance only and do not constitute any part of an offer or contract. Prospective purchasers or tenants should not rely on these particulars as statement or representation of fact, but must satisfy themselves by inspection or otherwise as to their accuracy. No person in the employment of PETER LARGE Estate Agents has the authority to make or give any representation or warranty in relation to the property. Room sizes are approximate and all comments are of the opinion of PETER LARGE Estate Agents having carried out a walk through inspection. These sales particulars are prepared under the consumer regulations 2008 and are governed by the business from misleading marketing regulations 2008.