



6

Albert Row, Sherborne

6

Albert Row
Sherborne
Dorset DT9 3JR

This two bedroom terraced property is conveniently located a short distance from Sherborne's amenities. With an enclosed rear garden and charming features throughout the property is in need of modernisation.



- Two bedroom character property
 - Town centre location
- Charming period features throughout
 - No onward chain
 - Enclosed garden to the rear
 - Council Tax Band: B

Offers In Excess Of **£210,000**

Freehold

Sherborne Sales
01935 814488
sherborne@symondsandsampson.co.uk



ACCOMODATION

This charming property offers a well-appointed kitchen, fitted with a range of wooden wall, base, and drawer units, complemented by a classic ceramic Belfast sink. There is space and plumbing in place for a cooker, washing machine, and fridge freezer. The kitchen also houses the gas boiler.

Beyond the kitchen lies the first reception room, featuring an open fireplace, radiator, and stairs leading to the first floor.

A wooden door leads through to a living room, complete with a built-in cupboard, radiator, and a second open fireplace.

Located at the rear of the property, the conservatory is filled with natural light with a door providing direct access to the rear garden.

The family bathroom is also located on the ground floor.

Stairs from the entrance hall rise to the first-floor landing, which offers access to both bedrooms and the loft space. The spacious main bedroom enjoys original wooden flooring, another attractive period fireplace, a radiator, built-in shelving. The second bedroom is situated at the front of the property and features a charming period fireplace.

GARDEN

From the conservatory you come to the rear garden which is mostly laid to gravel. There is a pathway leading to a gate at the bottom of the garden where a pathway provides pedestrian access to the row

of terraced houses. The garden is enclosed and has areas of greenery containing mature shrubs, bushes and flowers.

SITUATION

The house is about 5 minutes' walk to the main shopping street, where there are a wide range of shops, local businesses and facilities including a Waitrose supermarket. Other towns within driving distance include the regional centre of Yeovil (5.5 miles) and the county town of Dorchester (18 miles).

Sherborne also has an excellent range of schools with two primary schools within the town, both feeding to The Gryphon School for secondary education. Private schools in the area include the Sherborne schools, Leweston, Hazlegrove and the Bruton schools. Sherborne has a regular mainline service to Waterloo taking about 2.5 hours and there is a fast train service from Castle Cary (12 miles) to Paddington, which takes about 90 minutes. Bournemouth, Bristol and Exeter Airports are all easily accessible.

MATERIAL INFORMATION

Mains gas, electricity, water and drainage
Gas central heating

Broadband - Ultrafast broadband is available.
Mobile phone signal is available at the property, for further information please see www.ofcom.org.uk
Dorset Council
Council Tax Band: B

This property is situated within a conservation area.

SITUATION

The property lie within close proximity to the main shopping street, where there are a wide range of shops, local businesses and facilities including a Waitrose supermarket. Other towns within driving distance include the regional centre of Yeovil (5.5 miles) and the county town of Dorchester (18 miles).

Sherborne also has an excellent range of schools with two primary schools within the town, both feeding to The Gryphon School for secondary education. Private schools in the area include the Sherborne schools, Leweston, Hazlegrove and the Bruton schools. Sherborne has a regular mainline service to Waterloo taking about 2.5 hours and there is a fast train service from Castle Cary (12 miles) to Paddington, which takes about 90 minutes. Bournemouth, Bristol and Exeter Airports are all easily accessible.

DIRECTIONS

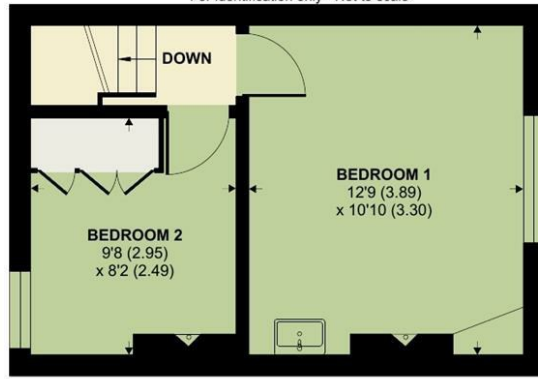
What3words - ///fled.justifies.darts



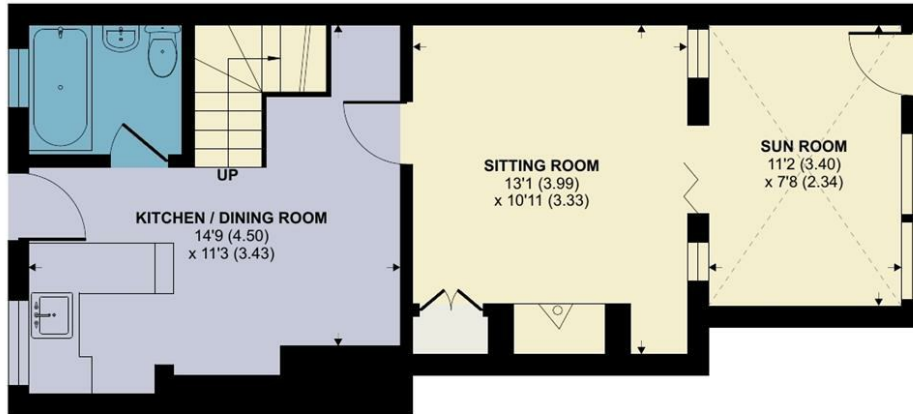
Albert Row, Sherborne

Approximate Area = 716 sq ft / 67 sq m

For identification only - Not to scale



FIRST FLOOR



GROUND FLOOR



Floor plan produced in accordance with RICS Property Measurement Standards incorporating International Property Measurement Standards (IPMS2 Residential). © ncthecom 2022. Produced for Symonds & Sampson. REF: 870885



Energy Efficiency Rating		Current	Potential
Very energy efficient - lower running costs			
(92 plus)	A		86
(81-91)	B		
(69-80)	C		
(55-68)	D	67	
(39-54)	E		
(21-38)	F		
(1-20)	G		
Not energy efficient - higher running costs			
England & Wales		EU Directive 2002/91/EC	



Sherb/KS/0925



01935 814488

sherborne@symondsandsampson.co.uk
Symonds & Sampson LLP
4 Abbey Corner, Half Moon Street,
Sherborne, Dorset DT9 3LN



Important Notice: Symonds & Sampson LLP and their Clients give notice that: 1. They have no authority to make or give any representations or warranties in relation to the property. These particulars do not form part of any offer or contract and must not be relied upon as statements or representations of fact. 2. Any areas, measurements or distances are approximate. The text, photographs and plans are for guidance only and are not necessarily comprehensive. It should not be assumed that the properties have all necessary planning, building regulation or other consents and Symonds and Sampson LLP have not tested any services, equipment of facilities. 3. We have not made any investigation into the existence or otherwise of any issues concerning pollution of the land, air or water contamination and the purchaser is responsible for making his/her own enquiries in this regard. 4. The property is sold subject to and with the benefit of all existing wayleaves, easements and rights of way whether public or private, specifically mentioned or not. The vendors shall not be required to define any such rights, privileges or advantages.

SALES | LETTINGS | AUCTIONS | FARMS & LAND | COMMERCIAL | NEW HOMES | PLANNING & DEVELOPMENT