



Guide Price
£200,000

Leasehold

2x  1x  1x 

**Bradshaw Road,
Chichester, West
Sussex, PO19**

OVER 60?

Secure this property
for up to **59% less!**

cubitt & west
Helping you move forwards



Main features

- First floor apartment with generous size side garden
- Strong scope for refurbishment
- Established residential setting
- Perfect for investors, downsizers or first time buyers
- Leasehold tenure

Accommodation

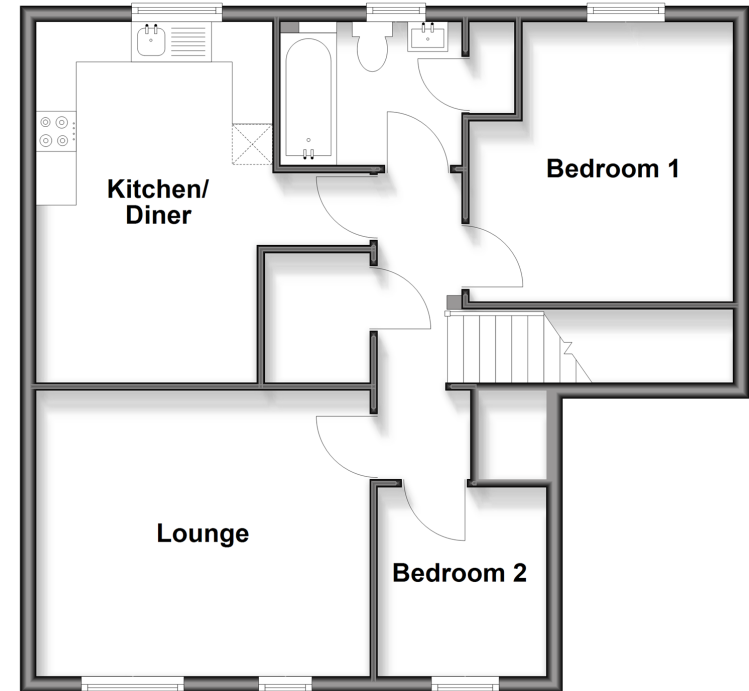
FIRST FLOOR

- Hallway
- Kitchen / Diner: 14'5 x 13'9 (4.40m x 4.19m)
- Bathroom
- Bedroom 1: 11'5 x 11'2 (3.48m x 3.41m)
- Bedroom 2: 7'10 x 6'11 (2.39m x 2.11m)
- Lounge: 13'9 x 11'9 (4.19m x 3.58m)

OUTSIDE

- Side Garden

First Floor
Approx. 62.2 sq. metres (669.6 sq. feet)



Call Chichester - 01243 786581 ■ cubittandwest.co.uk

- Legal advice should be taken to verify fixtures/fittings, planning, alterations and/or lease details
- Through a Homewise Home For Life Plan people aged 60+ can secure this property for up to 50% less, by purchasing a Lifetime Lease.

- Appliances & services are untested, dimensions are approximate and floor plans are not to scale



40415491/20250926/HS/HS