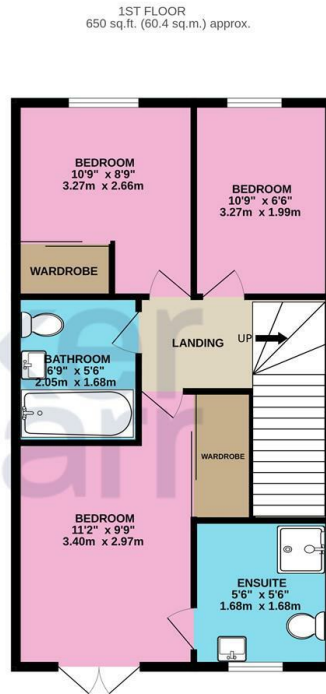
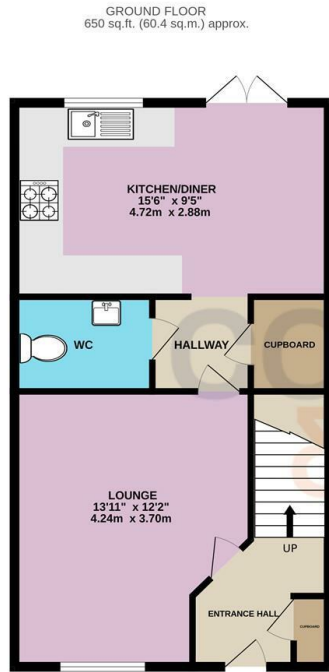




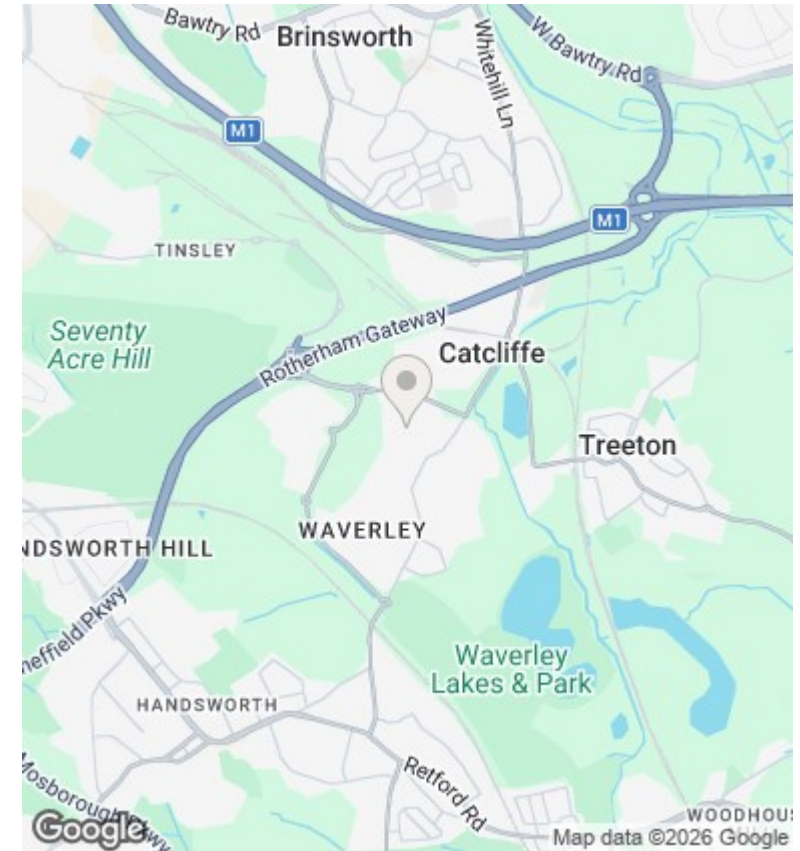
## 19 Owlthorpe Lane, Rotherham, S60 8DS

£1,450 Per Calendar Month

- Modern semi-detached house
- Built-in appliances
- Rear garden
- Available now
- Three bedrooms, en-suite to master bedroom
- Quartz worktops
- Furnished
- Modern dining kitchen
- Parking for two cars (garage is not part of the property)
- Council tax band B



TOTAL FLOOR AREA: 1301 sq.ft. (120.8 sq.m.) approx.  
Whilst every attempt has been made to ensure the accuracy of the floorplan contained here, measurements of doors, windows, rooms and any other items are approximate and no responsibility is taken for any error, omission or mis-statement. This plan is for illustration purposes only and should be used as such by any prospective purchaser. The services, systems and appliances shown have not been tested and no guarantee as to their operability or efficiency can be given.  
Made with Metropac ©2023



## Directions

## Viewings

Viewings by arrangement only. Call 01142 687777 to make an appointment.

## Council Tax Band

A

## EPC Rating:

B

Energy Efficiency Rating		Current	Potential
Very energy efficient - lower running costs			
(92 plus) <b>A</b>			<b>96</b>
(81-91) <b>B</b>		<b>84</b>	
(69-80) <b>C</b>			
(55-68) <b>D</b>			
(39-54) <b>E</b>			
(21-38) <b>F</b>			
(1-20) <b>G</b>			
Not energy efficient - higher running costs			
<b>England &amp; Wales</b>		EU Directive 2002/91/EC	