



Elm Park Gardens, SW10

£1,150,000

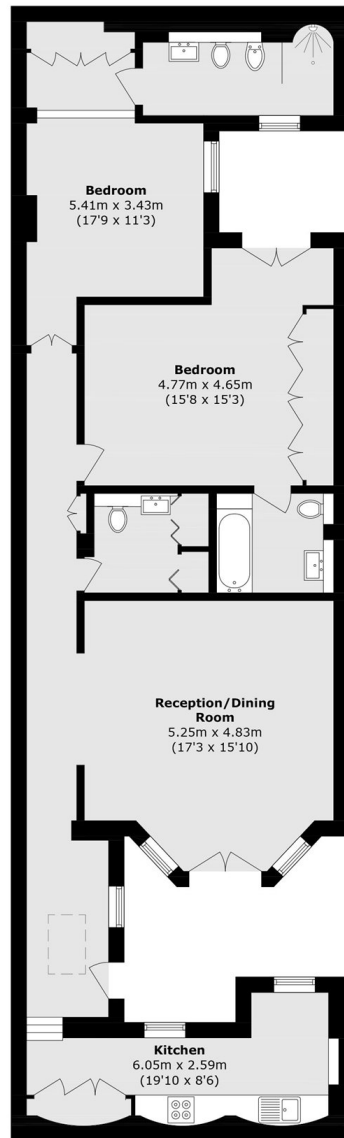
A two bedroom apartment measuring over 1100sqft with access to communal gardens. This property has a private entrance, a modern kitchen and a long lease.

Elm Park Gardens is ideally situated between the King's Road and Fulham Road. South Kensington, Gloucester Road and Sloane Square tube stations are all within walking distance.

Features

- Private Entrance
- Two Bedrooms
- Long Leasehold
- Two Bathrooms
- Communal Garden Access
- Excellent Condition

Elm Park Gardens, London, SW10



Lower Ground Floor

Total area (approx.): 106.7 sq. m (1148.5 sq. ft)