

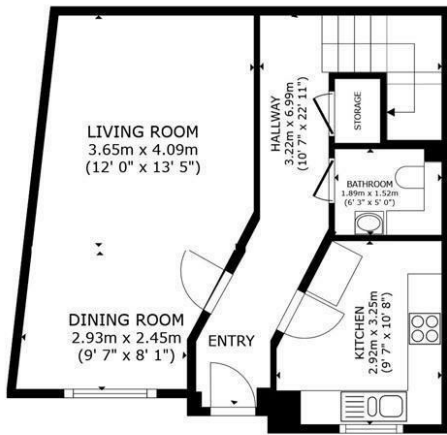


8 SPRINGFIELD PARK GATE HORSHAM

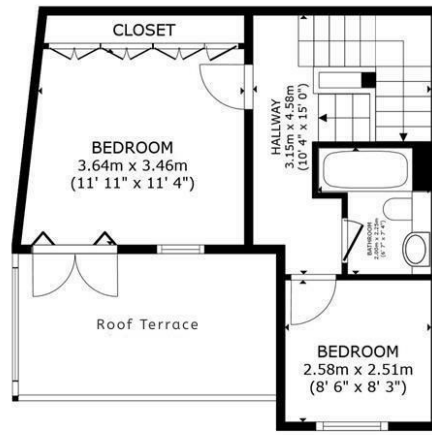
£500,000
FREEHOLD

- FOUR BEDROOM TOWN HOUSE IN A GATED DEVELOPMENT
- MODERN FITTED KITCHEN WITH INTEGRATED APPLIANCES
- MASTER BEDROOM WITH BUILT IN WARDROBES AND DOORS TO ROOF TERRACE
- THREE FURTHER BEDROOMS ONE WITH BUILT IN WARDROBES
 - ONE ALLOCATED PARKING SPACE
- GOOD SIZED LOUNGE/DINER WITH ENGINEERED HARDWOOD FLOORING
 - DOWNSTAIRS W/C
 - EN-SUITE SHOWER ROOM
- FAMILY BATHROOM WITH SHOWER OVER BATH
 - COMMUNAL GARDENS

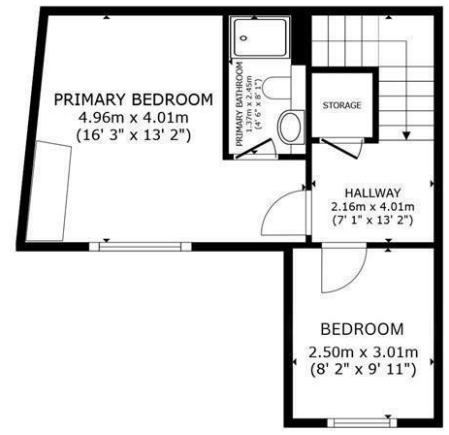




FLOOR 1



FLOOR 2



FLOOR 3

ELTONS

GROSS INTERNAL AREA
 FLOOR 1 49.2 m² (530 sq.ft.) FLOOR 2 36.6 m² (394 sq.ft.) FLOOR 3 36.0 m² (387 sq.ft.)
 EXCLUDED AREAS : BALCONY 11.4 m² (123 sq.ft.)
 TOTAL : 121.8 m² (1,311 sq.ft.)
 SIZES AND DIMENSIONS ARE APPROXIMATE, ACTUAL MAY VARY.



Energy Efficiency Rating		Current	Potential
Very energy efficient - lower running costs			
(92 plus) A			
(81-91) B			
(69-80) C		79	83
(55-68) D			
(39-54) E			
(21-38) F			
(1-20) G			
Not energy efficient - higher running costs			
England & Wales		EU Directive 2002/91/EC	

Agents Note: Whilst every care has been taken to prepare these particulars, they are for guidance purposes only. All measurements are approximate and are for general guidance purposes only and whilst every care has been taken to ensure their accuracy, they should not be relied upon and potential buyers/tenants are advised to recheck the measurements

Eltons Estate Agents Horsham 01403 299 771
 13 - 15 Queen Street sales@eltons.co.uk
 Horsham eltons.co.uk
 West Sussex
 RH13 5AA

ELTONS
 Estate Agents