



Greenfields Agester Lane, Denton - CT4 6NP

Guide Price **£595,000**

Approximate Gross Internal Area (Including Low Ceiling) = 94 sq m / 1011 sq ft
Outbuildings / Garage = 56 sq m / 608 sq ft

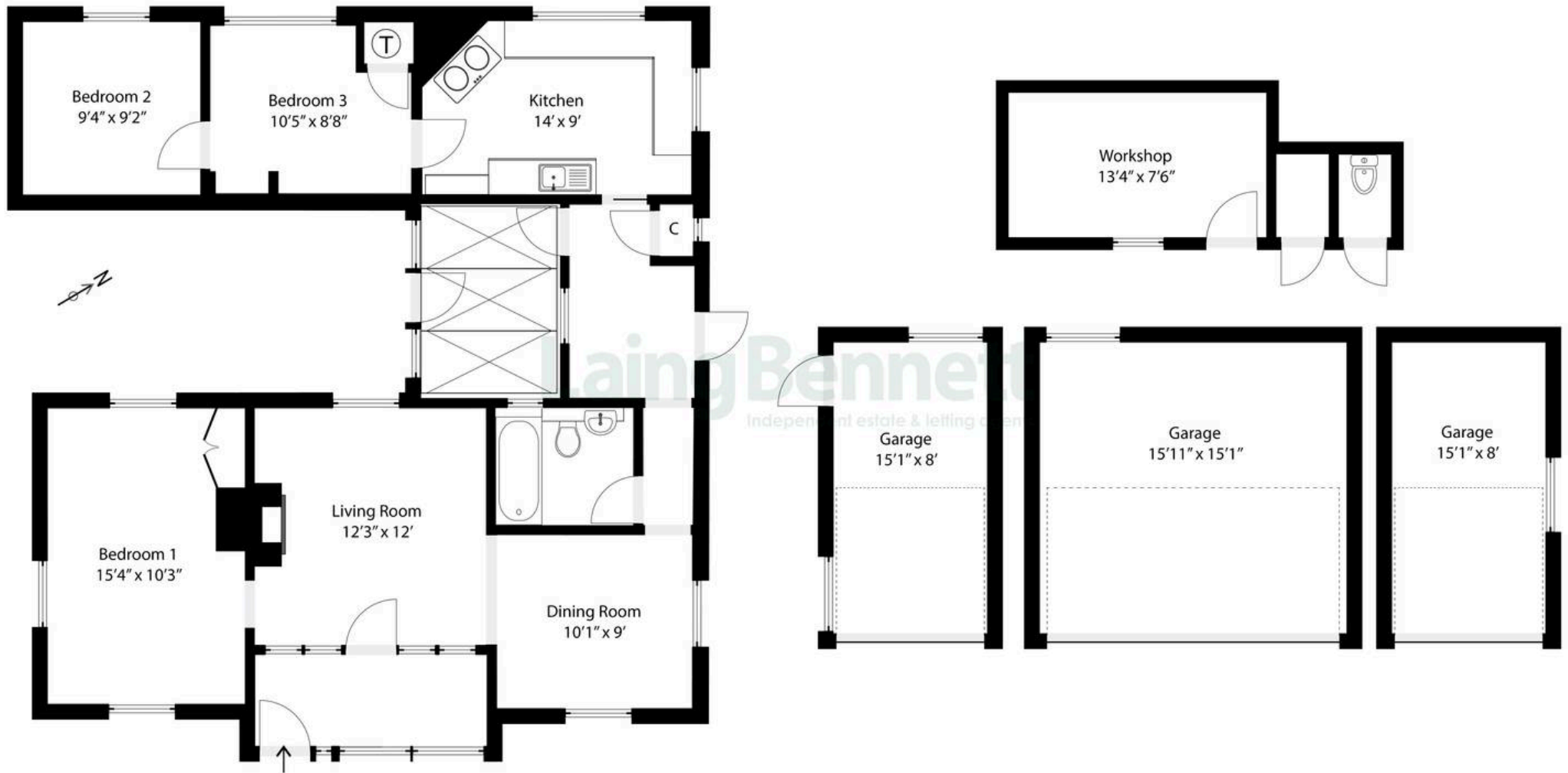


Illustration for identification purposes only. Measurements are approximate. Dimensions given are between the widest points.
Not to scale. Outbuildings are not shown in actual location.
© Unauthorised reproduction prohibited



Greenfields Agester Lane

Denton, Canterbury

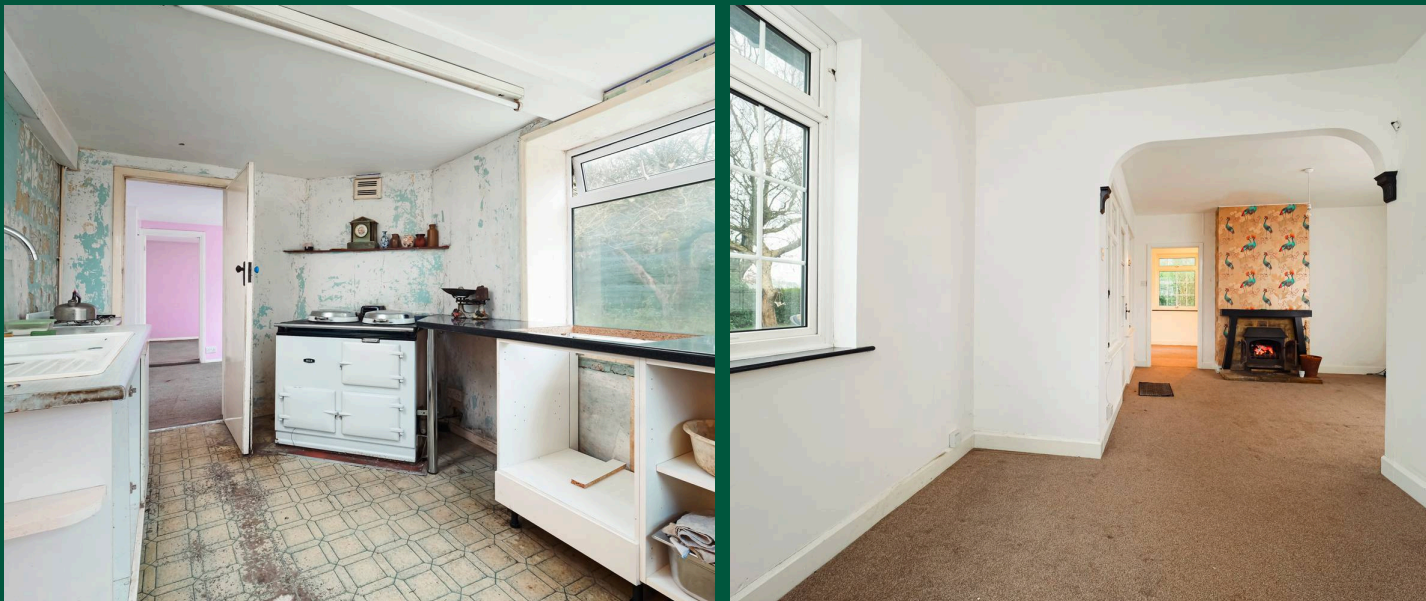
A rare opportunity to acquire this detached bungalow set in a highly sought-after rural location, nestled within approximately 1.2 acres of land. The property offers immense potential and features a range of outbuildings, including a double garage, two additional garages, a workshop, and an orchard area. The property has been in the same family for over 50 years and once operated as a poultry farm. The bungalow now requires updating and modernisation, presenting an excellent opportunity for renovation. The accommodation comprises a front porch, a living room, dining room, inner hall, conservatory, kitchen, three bedrooms, and a bathroom. Offered to the market with no forward chain, this is a unique chance to create a dream home in a picturesque countryside setting.

Council Tax band: E

Tenure: Freehold

EPC Energy Efficiency Rating: F

EPC Environmental Impact Rating: G



Laing Bennett

Laing Bennett Ltd, The Estate Office, 8 Station Road – CT18 8HP

01303 863393

info@laingbennett.co.uk

www.laingbennett.co.uk/

DISCLAIMER – These details are for guidance only and do not form part of an offer or contract. Measurements are approximate. Laing Bennett Ltd and the Vendor/Landlord accept no liability. Services and appliances are untested. Applicants must make their own checks. Items shown may not be included. No staff have authority to give warranties.