



G25, Shorefield, Shorefield Country Park, Downton, SO41 0LH

£32,500

Mitchells

1963 — TODAY



G25 Shorefield
Shorefield Country Park
Downton
Hampshire
SO41 0LH

“ **BEAUTIFUL HOLIDAY HOME FOR SALE** ”

This brilliantly positioned holiday home is presented in fantastic order throughout and is within level walking distance of all the facilities (bar, restaurant and leisure facilities) at the 5 star, award winning Shorefield Country Park, Milford on Sea which is only 10 minutes walking distance to the clifftop, with stunning views of The Needles, and only 10-12 miles to Bournemouth.

The property has been well cared for by the current owner and features a large open plan kitchen/dining area with integrated appliances including a dishwasher and wine cooler, vaulted ceilings with velux windows, two good sized bedrooms, with bedroom one benefiting from an en-suite bathroom, plus a separate, family shower room, two areas of decking, outdoor space, parking, and a long remaining licence (Approximately 11 years).

- 2017 Regal Symphony 40x12
- License Ends 31/10/2037
- 2026 Site Fees: £7,694.68
- 2026 Rates: £930.32
- Second Home, Cannot Be Your Main Residence
- Open Plan Kitchen/Living Area
- Two Good Size Bedroom
- Family Bathroom & En-Suite Shower Room
- Private Gardens
- Parking



The Property

Kitchen/dining room with timber effect flooring and a generous range of gloss wall and base units with a contrasting worktop. There is a breakfast bar with two stools, integrated appliances including raised double ovens, an eye level microwave, a five burner gas hob with an extractor fan above, a wine fridge, and a slimline dishwasher. A cupboard houses the gas fired central heating boiler. The room also features two Velux windows and a one and a half bowl stainless steel sink unit.

The sitting room benefits from a pleasant triple aspect and double doors opening onto one of the decking areas. It includes a feature electric fireplace, a wall mounted TV unit, and ample space for furniture.

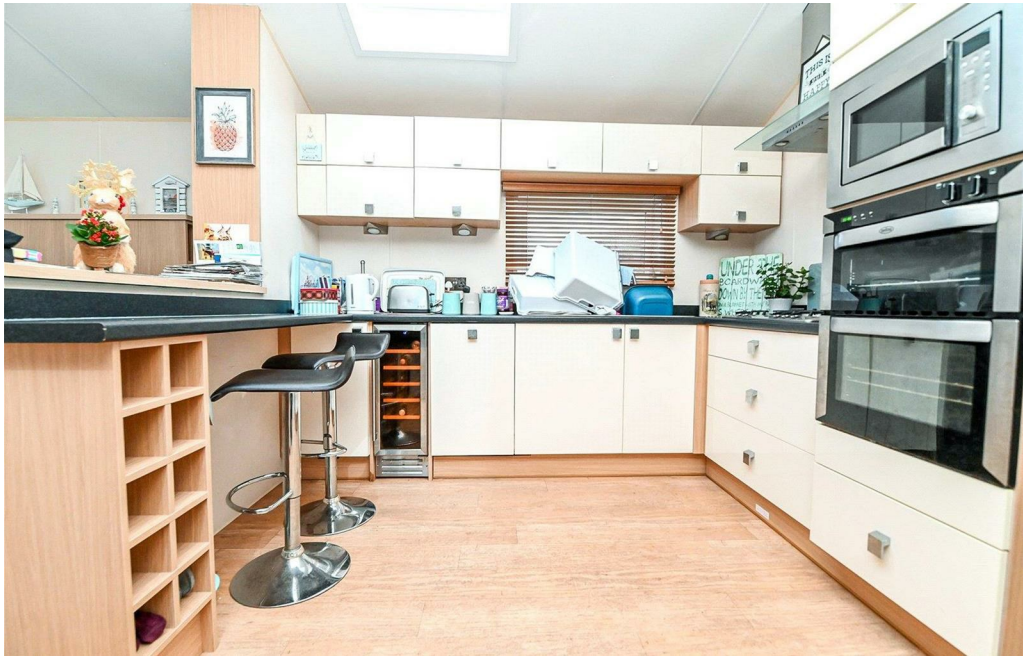
The family shower room has timber effect flooring and a suite comprising a WC, a wash hand basin with mixer tap and storage beneath, an extractor fan, recessed ceiling spotlights, a radiator, and a shower cubicle with a glass sliding door.

Bedroom one is an excellent king size room with matching bedside cabinets, a chest of drawers, fitted wardrobes, a large picture window, a vaulted ceiling with recessed spotlights, and a door leading to the en-suite bathroom.

The en-suite features timber effect flooring, a panel bath with mixer tap and wall-hung shower attachment, a glass shower screen, a radiator, a WC, a UPVC double glazed window, an extractor fan, and a wash hand basin with mixer tap and storage beneath.

Bedroom two is currently laid out as a double bedroom with matching bedside cabinets, wall hung storage, and a double fitted wardrobe.





Gardens & Grounds

G25 benefits from two areas of raised decking, both ideal for outdoor entertaining, with steps leading down to an additional garden area that enjoys an excellent degree of privacy. The holiday home also includes parking and is only a short walk from all the facilities at Shorefield Country Park.

Site Fees & Charges

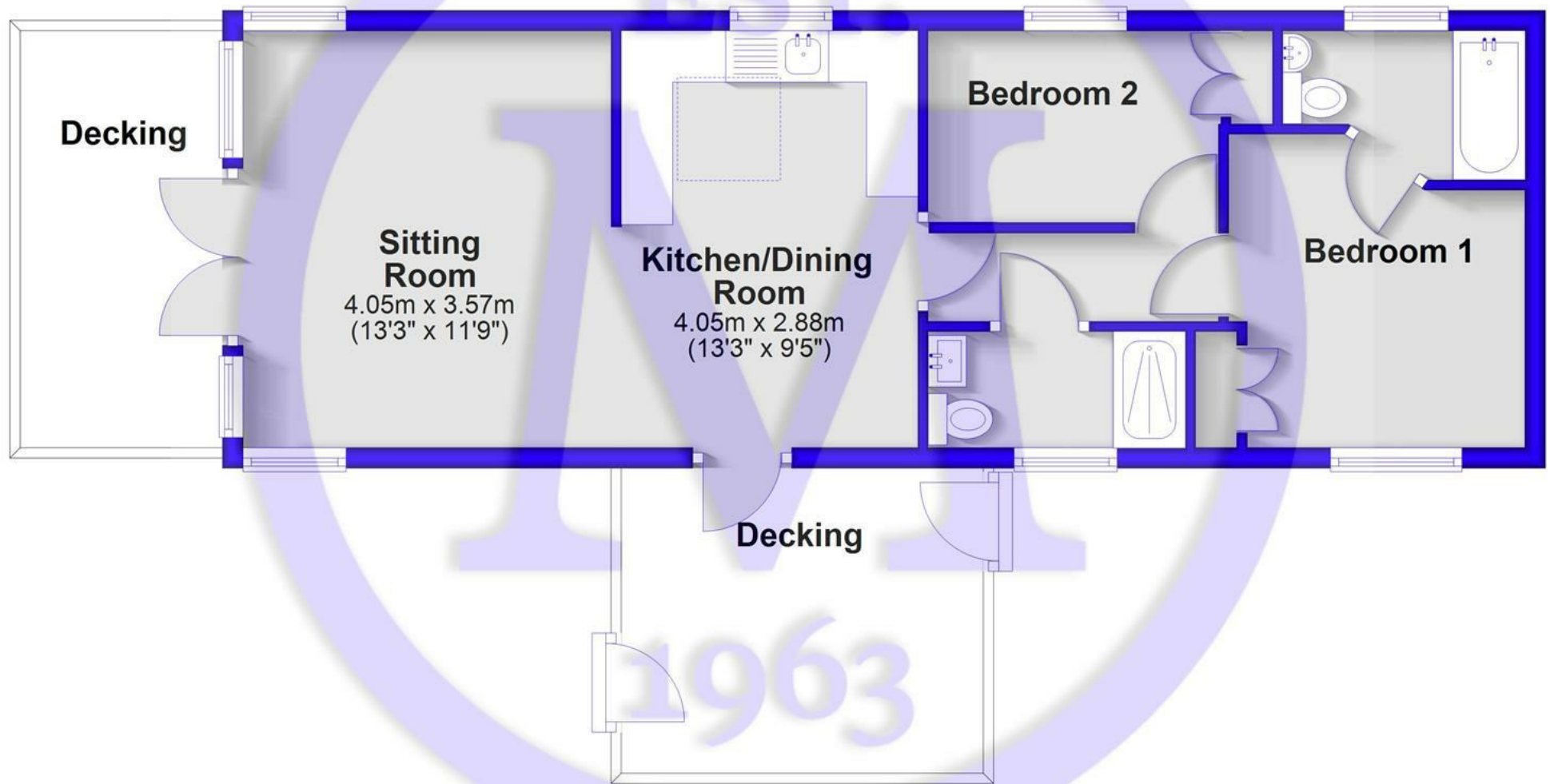
2026 Site Fees: £7,694.68

2026 Rates: £930.32

License Ends 31/10/2037

Floor Plan

Approx. 50.4 sq. metres (542.7 sq. feet)



Total area: approx. 50.4 sq. metres (542.7 sq. feet)

Situation

Located on the southern edge of the New Forest National Park and just a short stroll from the shingle beaches of Milford on Sea, the award-winning Shorefield Country Park offers an idyllic spot for the ultimate getaway. The park boasts a wide range of excellent facilities, including heated indoor and outdoor pools, a gym and day spa, bars, a restaurant, a fishing lake, pet-friendly areas, play areas, tennis courts, and live family entertainment.

At Shorefield Country Park, site fees run from November to October, while the rates are charged from April to March. These fees can be paid either over six or twelve months. Gas and electricity are metered, with bills issued in May and November. The park is open from 10th February to 5th January, providing a fantastic year-round retreat.





Mitchells.uk.com
info@mitchells.uk.com
01425 616411

Centenary Buildings
8-10 Old Milton Road
New Milton
Hampshire
BH25 6DT

Mitchells
1963 — TODAY

