

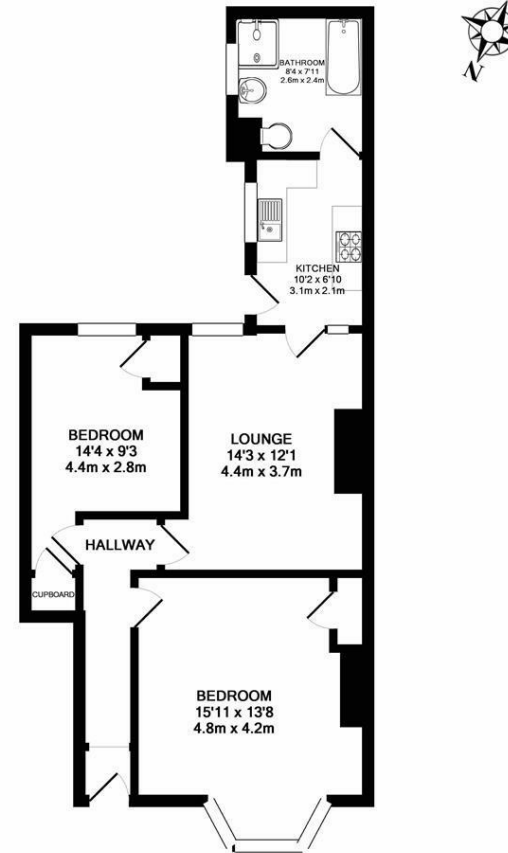
****AVAILABLE SEPTEMBER 2026****

****FURNISHED**** A fantastic ground floor Tyneside flat found on Mowbray Street, Heaton. Contemporary throughout with wood flooring, modern kitchen & bathroom, fully furnished and in a highly sought after location, close to transport links and several local shops. Newcastle city centre is also walking distance.



The property briefly comprises an entrance hall leading to; double bedroom to the front with bay window and fitted alcove wardrobe space; bedroom two, also a double with fitted wardrobe; lounge central to the property with spot-lighting; modern fitted kitchen with appliances, spot-lighting and tiled flooring; bathroom WC with both a step in shower cubicle and separate bath. Externally there is a yard to the rear, as well as on street parking to the front. Available to either students or professionals on a furnished basis, with gas central heating and double glazed windows throughout.

Available 1st September 2026 | £900pcm | 647 Sq. ft (60.1 m²) | Great Location | Close To Public Transport Links | Furnished | Ground Floor Tyneside Flat | Two Double Bedrooms | Fitted Wardrobe Space | Lounge | Modern Kitchen | Bathroom WC | On Street Parking | Rear Yard | DG & GCH | Council Tax Band: A | EPC Rating: C



TOTAL APPROX. FLOOR AREA 647 SQ.FT. (60.1 SQ.M.)

Whilst every attempt has been made to ensure the accuracy of the floor plan contained here, measurements of doors, windows, rooms and any other items are approximate and no responsibility is taken for any error, omission, or mis-statement. This plan is for illustrative purposes only and should be used as such by any prospective purchaser. The services, systems and appliances shown have not been tested and no guarantee as to their operability or efficiency can be given
Made with Metropix ©2018

£900 PCM

IMPORTANT NOTE: These particulars and the descriptions and measurements herein do not constitute representation and whilst every effort has been made to ensure accuracy, this cannot be guaranteed.

